

September 2011



NORTHLAND POWER

McLean's Mountain Wind Farm

Consultation Report - Final



Submitted by:



**McLean's Mountain Wind Farm -
Renewable Energy Approval (REA)
Application Submission**

Consultation Report

FINAL SUBMISSION

September 2011

Northland Power Inc.

09-1983

Submitted by

**Dillon Consulting
Limited**

Executive Summary

Northland Power Inc. (NPI) and Mnidoo Mnising Power (MMP) together form the McLean's Mountain Wind Limited Partnership (MMWLP). MMWLP proposes to develop the McLean's Mountain Wind Farm (MMWF), located south of the community of Little Current, in the Municipality of Northeastern Manitoulin and the Islands (NEMI); geographic Township of Howland, and the geographic Township of Bidwell in the District of Manitoulin, Ontario and falls within the traditional lands of the Anishnabee of Mnidoo Mnising. The selection of the project's location was based primarily on the wind resource, access to the Provincial transmission system, environmental constraints and local landowner support.

The proposed wind farm (the "project") will consist of 24, 2.5 MW wind turbines with a nameplate capacity of 60 MW. The electricity generated from the wind turbines will be collected through a network of collection grid lines to the on-site transformer. The transformer will step-up the voltage to 115 kV. A 10.3 kilometre transmission line will be installed to connect the project to the Provincial Grid on Goat Island. A section of the transmission line will involve a submarine cable to cross the North Channel to access Goat Island. Each wind turbine will be accessed by a short access road.

The proposed project will require approval under Ontario Regulation 359/09 – Renewable Energy Approval (REA) under the *Green Energy Act*. Based on the REA Regulations, this project is a "Class 4" wind facility. The *Consultation Report* is one component of the REA Application for the Project, and has been written in accordance with Ontario Regulation 359/09, the Ontario Ministry of Natural Resources' (MNR) Approval and Permitting Requirements Document for Renewable Energy Projects (September 2009) and MOE's draft Technical Bulletin Five: Guidance for Preparing the Consultation Report (March 2010).

This *Consultation Report* presents the details of the proponents' consultation with landowners, stakeholders, general public, Agencies, Municipalities and other local authorities, including First Nations. As this project has been on-going for over 8 years, summary tables have been prepared and included as Appendices to this Report to detail the extensive consultation program. Summaries of significant consultation activities are included in the text of the report. This Report outlines the public information centres that were held to provide information and to help gather feedback on the project as well as media and newspaper type consultation activities. Key consultation activities that are on-going and that will continue throughout the construction, operations and decommissioning phases of the project are also discussed.

As this project precedes the REA regulation, this Report provides a high level overview of the consultation activities that occurred under the former EA process. The focus of this Report is on the consultation activities that have occurred since the REA regulations have governed this project. Numerous changes have been made to the project layout as a result of public and Aboriginal community input, including the removal and relocation of turbine locations. The input received and NPI's responses to the received comments have been documented in this *Consultation Report*.

Table of Contents

| | Page |
|--|-------------|
| EXECUTIVE SUMMARY | i |
| 1. INTRODUCTION..... | 1 |
| 2. THE PROPONENT..... | 3 |
| 3. PROPOSED PROJECT LOCATION..... | 4 |
| 4. STAKEHOLDER CONSULTATION..... | 5 |
| 4.1 Consultation Methodology | 5 |
| 4.2 Public Consultation | 6 |
| 4.2.1 Contact List | 6 |
| 4.3 Project Notification | 7 |
| 4.3.1 Project Notification under the Electricity Project Environmental Assessment Regulations (Ontario Regulation 116/01) | 7 |
| 4.4 Project Notification under Ontario Regulation 359/09 – Renewable Energy Approval (REA) under the Green Energy Act | 8 |
| 4.5 Meetings with the Public..... | 9 |
| 4.5.1 Public Information Centres under Regulation 116/01 | 9 |
| 4.6 Public Information Centre under Renewable Energy Approvals Process..... | 10 |
| 4.7 Consultation Regarding Hunt Camps..... | 12 |
| 4.8 Consultation with Municipality and Local Authorities | 13 |
| 4.9 Agency Notification and Consultation | 15 |
| 4.9.1 Summary of Federal Agency Consultation | 15 |
| 4.10 Provincial Agencies..... | 16 |
| 4.11 Aboriginal Consultation | 22 |
| 4.11.1 Aboriginal Consultation under the Ontario Regulation 116/01 Process..... | 22 |
| 4.11.2 REA Aboriginal Consultation..... | 24 |
| 4.11.3 The Forming of the NPI/Mnidoo Mnising Power Corporation Partnership..... | 28 |
| 4.12 Communication Tower Consultation | 31 |
| 5. RELEASE OF DRAFT AND FINAL REA DOCUMENTS | 32 |
| 6. DOCUMENTATION | 33 |
| 7. FUTURE CONSULTATION COMMITMENTS | 34 |

List of Tables

| | |
|------------|--|
| Table 1-1: | Consultation Report Requirements (O.Reg 359/09) |
| Table 3-1 | Summary of Meetings/Contacts with Provincial Agencies under REA |
| Table 3-2 | Consultation Summary with Aboriginal Communities and Organizations |

List of Figures

Figure 3-1 Project Area

List of Appendices

Appendix A: Aboriginal Consultation

- MOE Aboriginal Consultation Letter
- Aboriginal Communications Log
- Correspondence with Aboriginal Communities/Agencies
- Aboriginal Summaries of REA Reports

Appendix B: Project Notifications and Letters

- Project Notification (Notices and Letters)
- Agency Correspondence under Ontario Regulation 359/09 – Renewable Energy Approval (REA) under the Green Energy Act
 - Includes Sept 9, 2011 Ministry of Resources Natural Heritage Assessment Confirmation Letter
- Public Correspondence under Ontario Regulation 359/09 Renewable Energy Approval (REA) under the Green Energy Act
- Municipal Consultation Form
- Councilor Letters
- Road User Agreement

Appendix C: PIC Information

Final Public Information Centre Documents

- Sign-In Sheet
- Handout Materials
 - Display Panel Presentation
 - Additional Reports
- Complete Comment Sheets

Appendix D: MOE Comment and Responses

Comments and Responses

- The McLean's Mountain Wind Farm Comment Response Table received under REA, April 2010, revised November 2010 and finalized July 2011.

Appendix E: Media Releases

- Media Releases on the Proposed Project
- Weekly Newspaper Columns appearing in the Manitoulin Expositor Dec 2010 – September 2011

1. INTRODUCTION

Northland Power Inc. (NPI) and Mnidoo Mnising Power (MMP) together form the McLean's Mountain Wind Limited Partnership (MMWLP). MMWLP proposes to develop the McLean's Mountain Wind Farm (MMWF). The proposed wind farm (the "project") will consist of 24, 2.5 megawatt (MW) wind turbines that will generate 60 MW of electricity. The proposed project will require approval under Ontario Regulation 359/09 – Renewable Energy Approval (REA) under the *Green Energy Act*. Based on the REA Regulations this project is a "Class 4" wind facility. This *Consultation Report* is written in accordance with Ontario Regulation 359/09.

For the purposes of all the environmental studies, twenty-nine (29) potential turbine sites have been identified and examined. Approval is only being sought for the construction of 24 turbines. The five additional turbine sites will only be implemented, should any of the preferred 24 sites become unsuitable for development.

The McLean's Mountain Wind Farm Environmental Study Report (ESR) document was released in July 2009 for a 30-day public review, as part of the former Environmental Assessment process. The ESR document is consistent with the former Environmental Screening provisions of Ontario Regulation 116/01 for a Category B project and with the requirements of the *Canadian Environmental Assessment Act*. The ESR document was developed to assist in the determination of potential environmental effects, including both the social and natural environment, which could result from the proposed project. The ESR document contains additional information that is not required under the REA legislation and can provide further reference as required.

The REA approval process replaces approvals formerly required under the Environmental Assessment Act, Planning Act, and Environmental Protection Act. The project is being developed under the *Green Energy Act* (GEA) Feed-In-Tariff (FIT) program.

Table 1-1 below outlines the requirements of this report as specified under O.Reg 359/09.

Table 1-1: Consultation Report Requirements (O.Reg 359/09)

| <i>Requirements</i> | <i>Section of Report</i> |
|--|--------------------------|
| A summary of communication with any members of the public, aboriginal communities, municipalities, local roads boards and Local Services Boards regarding the project. | 3, 4 |
| Evidence that the information required to be distributed to aboriginal communities under subsection 17 (1) was distributed. | 3 |
| Any information provided by an aboriginal community in response to a request made under paragraph 4 of subsection (17). | 3 |
| Evidence that a consultation form was distributed in accordance with subsection 18 (1). | 3 |
| The consultation form distributed under subsection 18 (1), if any part of it has been completed by a municipality, local roads board or Local Services Board. | 3 |
| A description of whether and how comments from members of the public, aboriginal communities, municipalities, local roads boards and Local Services Boards were considered by the person who is engaging in the project. | 3, 4 |
| A description of whether and how, the documents that were made available under subsection 16 (5) were amended after the final public meeting was held. | 4, Appendix B, D |
| A description of whether and how the proposal to engage in the project was altered in response to comments mentioned. | 4, Appendix B, D |

This *Consultation Report* provides a summary of the consultation process from the inception of the project in 2004 to current and on-going activities.

Technical studies associated with the REA requirements have been completed. In addition to this report the REA submission package includes:

- Project Description Report;
- Construction Plan Report;
- Design and Operations Report;
- Noise Study Report;
- Natural Heritage Assessment Reports (Records Review, Site Investigation, Evaluation of Significance, and Environmental Impact Statement (EIS));
- Water Bodies Assessment Summary Report;
- Archaeological Assessment Reports (Stage 1 and 2) ;
- Cultural Heritage Self-Assessment Report;
- Decommissioning Report;
- Property Line Setback Report;
- Wind Turbine Specification Report;
- Environmental Management and Protection Plan (EMPP);

- Post-Construction Monitoring Plan (PCMP); and
- Supporting Documents.

2. THE PROPONENT

Northland Power Inc. (NPI) is a developer, owner and operator of power generation facilities and is the proponent of the "McLean's Mountain Wind Farm Project". In February 2011, Mnidoo Mnising Power (MMP), a company formed by the United Chiefs and Councils of Mnidoo Mnising (UCCMM), entered into a 50/50 partnership with NPI to form McLean's Mountain Wind Limited Partnership to develop the McLean's Mountain 60 MW Wind Farm project.

NPI's development activities include building, owning and operating wind energy facilities. In the course of developing its wind energy projects, NPI satisfies various environmental approval requirements and obtains regulatory approvals that vary depending on the jurisdiction, project capacity and site location.

The MMP company was formed to lead renewable energy projects on Manitoulin Island in order to protect First Nations' rights, heritage and ensure the future for First Nations' youth.

MMWLP is the primary contact for this project. The MMWLP contact information is as follows:

| | |
|------------------------------|--|
| Full Name of Company: | <u><i>McLean's Mountain Wind Limited Partnership</i></u> |
| Address: | <u><i>30 St. Clair Avenue West, 17th Floor</i></u> <u><i>Toronto, Ontario M4V 3A1</i></u> <u><i>Canada</i></u> |
| Telephone: | <u><i>Local office: (705)-368-0303</i></u> <u><i>mobile: (705)-271-5358</i></u> |
| Prime Contact: | <u><i>Rick Martin, Project Manager</i></u> |
| Email: | <u><i>rickmartin@northlandpower.ca</i></u> |

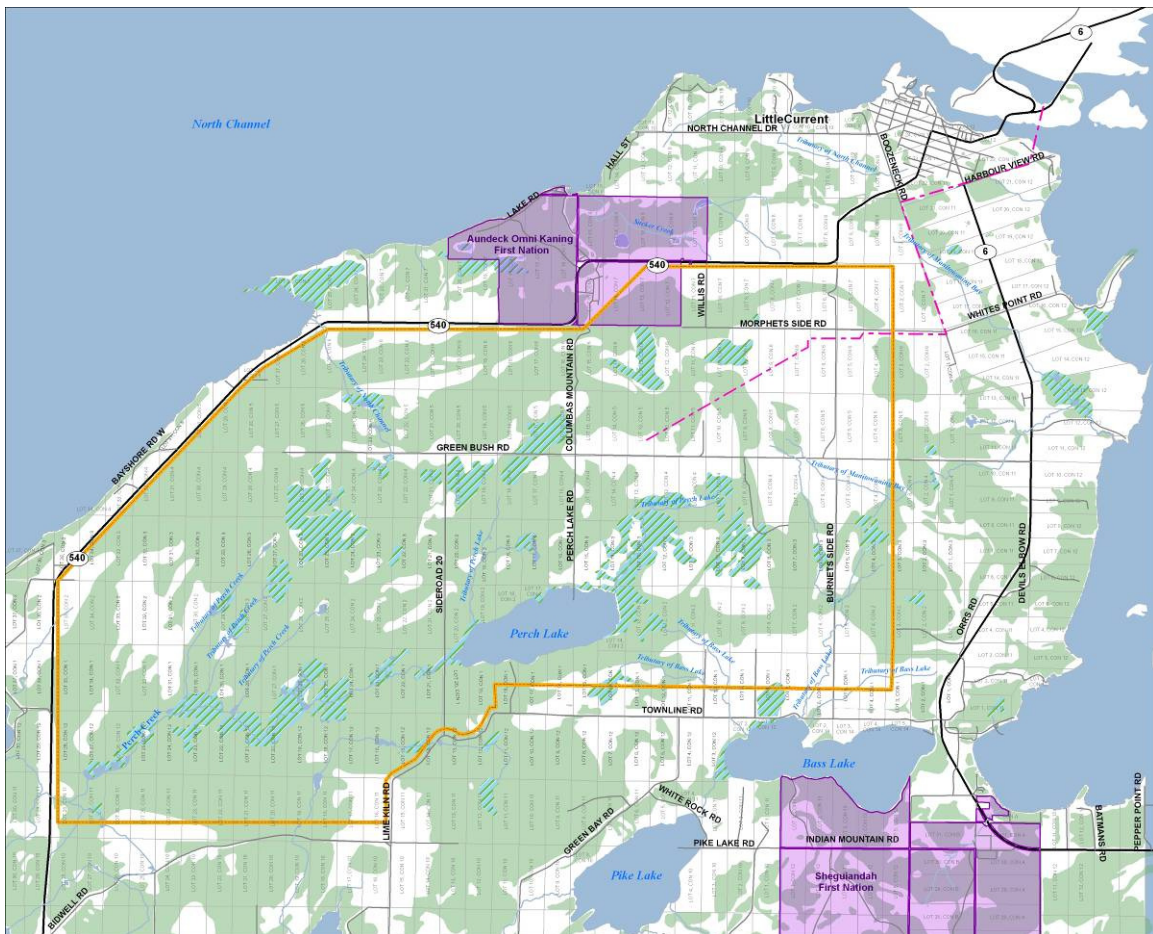
Dillon Consulting Limited is the prime consultant for the preparation of this Project Description Report. The Dillon contact information is as follows:

| | |
|------------------------------|--|
| Full Name of Company: | <u><i>Dillon Consulting Limited</i></u> |
| Address: | <u><i>235 Yorkland Boulevard, Suite 800,</i></u> <u><i>Toronto, Ontario M2J 4Y8</i></u> |
| Telephone: | <u><i>Office: (416)-229-4646 ext 2335</i></u> |
| Prime Contact: | <u><i>Don McKinnon, REA Project Manager</i></u> |
| Email: | <u><i>dpmckinnon@dillon.ca</i></u> |

3. PROPOSED PROJECT LOCATION

The project study area is located entirely in the Municipality of Northeastern Manitoulin and the Islands; geographic Township of Howland and the geographic Township of Bidwell, in the District of Manitoulin and falls within the traditional lands of the Anishnabee of Mnidoo Mnising. The project study area is about 5 kilometers from the Town of Little Current. Within this broader project study area is the project location, where the wind turbines and associated wind farm infrastructure will be located (excluding a portion of the transmission line and the connection yard at the Hydro One grid which is located on the adjacent Goat Island). **Figure 3-1** presents the location of the project area.

Figure 3-1: Project Area



The selection of the project's location was based primarily on the wind resource assessment results, access to the local electrical transmission system, environmental constraints and local landowner support.

4. STAKEHOLDER CONSULTATION

Stakeholder consultation has been a cornerstone of the project with multiple information sharing and stakeholder feedback opportunities provided. The consultation program was initiated in June 2004 and continues with the issuing of the Final Renewable Energy Approval (REA) Application Submission in July, 2011. Further consultations/communications are planned through the proposed construction, operations, and decommissioning phases of the project.

The following sections describe the key consultation activities that were undertaken to date and the proposed activities that are planned for the future. Comments received from Aboriginal communities, agencies, stakeholders, the general public and especially landowners within the project location have significantly influenced the layout of wind turbines and associated infrastructure since the beginning of the environmental assessment process in 2004 and more recently the REA submission.

4.1 Consultation Methodology

Since project initiation, various forms of consultation have taken place. A detailed account of these activities is outlined in the following sections, and includes: public notifications, consultation with government agencies, consultation with key interest groups, meetings with the local municipal council, consultation with Aboriginal communities and organizations, which, for the purposes of this report, include First Nations and Métis communities and organizations, media releases, and the holding of Public Information Centres (PICs).

The objectives of the McLean's Mountain Wind Farm public, agency and Aboriginal consultation process are:

- To undertake consultation early in the planning process and continue throughout the construction, operation and decommissioning phases of the project;
- Identify potentially interested stakeholders and the nature of their interests;
- Inform stakeholders of all relevant information about the project and how the project might affect the physical, natural, social and economic environment in the community; and
- Track and document all communications between stakeholders and the project team to ensure stakeholder interests are incorporated into the planning, design, construction, and operation of the wind farm, wherever possible.

A number of methods have been undertaken to achieve these objectives, including:

- Discussions with local government, provincial agencies and Aboriginal communities and organizations to obtain data and to identify issues associated with the project;

- Notifications and articles published in the local newspaper (*Manitoulin Expositor*);
- Direct mailings to the project contact list;
- Public Information Centres;
- Public Information Centre feedback questionnaires (review of comments and the issuing of responses to them);
- Discussions with local landowners and residents;
- Consultation activities with First Nation communities with the culmination of those consultations leading to a 50/50 ownership partnership of the project;
- The release of the ESR document and REA packages to the public, agencies, and Aboriginal communities for review and comment;
- Contact information for NPI and Dillon; and,
- A project website (www.northlandpower.com).

Recognizing the unique character of the area and the inherent challenges of consulting and engaging such a diverse population, NPI voluntarily undertook additional activities to keep the public informed and engaged. For instance, NPI has regularly written a weekly column in the *Manitoulin Expositor* to keep the public informed on the progress of the project and to inform them generally on various topics relating to wind power. Copies of these articles can be found in **Appendix E**.

4.2 Public Consultation

4.2.1 Contact List

A project contact list was established early on to identify potential stakeholders with a potential interest in the project. The contact list included federal and provincial agencies, elected officials, municipal staff, special interest groups, aboriginal contacts and all landowners within and around the project location. The contact list is provided in **Appendix B**. A map showing the geographical area where landowners received direct mailings is provided in **Appendix B**.

With the introduction of the REA process, consultation continued with all landowners within 120 metres of the project location, as well as any other interested parties that had been previously consulted. As required under O.Reg 359/09 a draft Project Description Report was provided to the MOE for review. NPI requested a list of Aboriginal communities who have or may have constitutionally protected aboriginal or treaty rights that may be adversely affected by the Project, or otherwise have an interest in the project. On April 15, 2010, the MOE provided NPI a list of Aboriginal communities that should be consulted with.

The MOE aboriginal consultation list received in April 2010 identified a couple of additional First Nation communities (on the mainland) that should be notified of the project as well as a couple of Métis organizations with whom had not been previously consulted with. Immediately NPI initiated consultation with those organizations that the MOE recommended.

The project contact list was continually updated throughout the EA and REA processes. Additions to the list occurred primarily as a result of attendance at the Public Information Centres but also through direct communication with the project team members.

4.3 Project Notification

Project notification was provided at various project milestones through formal Notices and letters. Copies of project Notices and letters are included in **Appendix B** of this report.

4.3.1 Project Notification under the Electricity Project Environmental Assessment Regulations (Ontario Regulation 116/01)

Details of project notification under Ontario Regulation 116/01 can be found in the McLean's Mountain Wind Farm Environmental Study Report, Chapter 4 and **Appendix B**.

Notice of Project and Notice of First Public Information Centre (June 2004)

- Newspaper Advertisement (Manitoulin Expositor)

Notice of Second Public Information Centre June 2005

- Newspaper Advertisement (Manitoulin Expositor)

Notice of Commencement of Environmental Screening (August 2005)

- Newspaper Advertisement (Manitoulin Expositor)

Notice of Study Restart and Notice of Third Public Information Centre (June 2009)

- Newspaper Advertisement (Manitoulin Expositor)
- Agency Letter
- Aboriginal Letter
- Municipal Letter
- Landowner Letter (Canada Post Admail)

ESR Notice of Completion – ESR Available for a 30 days review July 2009

- Newspaper Advertisement (Manitoulin Expositor)
- Agency Letter
- Aboriginal Letter
- Municipal Letter
- Landowner Letter (Canada Post Admail)

A written copy of the ESR was made available at the Township of NEMI's Clerk's Office and on the project website: www.northlandpower.ca under the *Project Development* tab. Copies of the final ESR were released to key government agencies (Environment Canada, Ontario Ministry of the Environment and the Ministry of Natural Resources) and Aboriginal Communities for review during the 30-day review period.

4.4 Project Notification under Ontario Regulation 359/09 – Renewable Energy Approval (REA) under the Green Energy Act

Through the previous environmental assessment process from 2004 to 2009, Agencies, the Municipality, landowners, First Nations and stakeholders were all well aware of the project. Under the former EA process, three PIC's were held. As the project was well advanced it was determined that only a PIC #2 (final PIC) under the REA process would be required (following the release of the draft REA Reports) to present the final layout to the public.

Notice of Draft REA Submission Package (January 2010)

An ad was placed in the Manitoulin Expositor on January 13th & 20th 2010 REA Submission package was available for a 60 day review, commencing January 18th, 2010. Drafts of all documents, with the exception of the Consultation Report, were made available on the project website, at the NPI/MMWLP Project Office located in the Town of Little Current and at NEMI's Clerk's office.

In addition to the Notice, a letter dated January 13, 2010, was sent by mail to federal and provincial agencies, NEMI, elected officials, special interest groups, Aboriginal communities and all landowners within 120 metres of project components. All other stakeholder who had formerly been on the ESR mailing list was also advised of the Draft REA submission.

Notice of Final Public Information Centre (February – March 2010)

An ad was placed in the Manitoulin Expositor on February 17th, February 24th & March 10th, 2010 to advertise the Final Public Information Centre that was held on March 22nd, 2010.

In addition to the Notice, a letter dated February 17th, 2010, was sent by mail to federal and provincial agencies, NEMI, elected officials, special interest groups, Aboriginals and all landowners within 120 metres of the project components.

Final REA Submission Application (May 2010)

In May 2010, Final REA Application Submission was submitted to the Director of the Environmental Assessment and Approvals Branch (EAAB) at the Ministry of Environment (MOE).

Based on the input of the MOE, NPI's REA submission relied on the formerly prepared ESR and a concordance table was included, to help demonstrate the fulfillment of the REA requirements. Following a meeting with the MOE in late June 2010, NPI received comments from the MOE in August 2010 and the REA submission was deemed incomplete. This REA submission considers all comments made by the MOE. See **Appendix D** for a list of the comments made by the MOE and NPI's responses to those comments. NPI received comments on the January 2010 REA submission package from the MNR in October 2010. The MNR advised NPI to prepare and submit a full REA documentation package as specified in the REA Regulations. Documentation that relied upon the ESR would not be acceptable.

Additional Final PIC (April – May 2011)

Between November 2010 and May 2011 several changes were made to the project layout to address public concerns. As a result of these layout changes, an additional Final PIC was held on May 18th, 2011 to present the changes to the project and to introduce Mnidoo Mnising Power as project partners.

On April 13th and May 4th, 2011 an ad was placed in the Manitoulin Expositor to advertise the Additional Final PIC. The changes to the project were presented in the ad as were the date, time and location of the upcoming PIC.

In addition to the newspaper ad, letters and the Notice was sent to federal and provincial agencies, NEMI, elected officials, special interest groups, Aboriginals and all landowners within 120 metres of project components.

Notice of Environmental Registry Posting

Within 10 days after the Notice of Proposal for a Renewable Energy Approval for the project is posted in the MOE Environmental Registry, a Notice containing requirements as outlined in Section 15, O.Reg 359/09 will be made available online and published in the Manitoulin Expositor.

A written copy of the REA Submission Package will also be made available at the NEMI Clerk's office as well as at the NPI/MMWLP Project Office located in the Town of Little Current as well as on the project website.

4.5 Meetings with the Public

4.5.1 Public Information Centres under Regulation 116/01

Public Information Centre #1

The first PIC was held on June 30th, 2004 in the Town of Little Current (NEMI Recreation Centre/Arena) to provide the public with general information about the project and NPI's intent to undertake an environmental screening. The Project Location was identified and general information about wind power was presented. Details of the

PIC proceedings as well as comments provided by the public are included in Section 4.6.1 and in *Appendix B of the ESR (July 2009)*.

Public Information Centre #2

The second PIC was held on June 28th, 2005 in the Town of Little Current (NEMI Recreation Centre/Arena) to provide the public with an update on the project. The purpose of the PIC was to: make information about the project available to the public, provide the public with an opportunity to learn more about the EA process and to provide a venue for questions and for providing feedback to NPI about the project. Issues raised by the public at this information centre included: impacts on birds, visibility of the wind turbines, project economic benefits and the effects of the project on tourism. Details of the PIC proceedings as well as comments provided by the public are included in Section 4.6.3 and in *Appendix B of the ESR (July 2009)*.

Public Information Centre #3

The third PIC was held on June 25th, 2009 at the NEMI Recreation Centre/Arena in Little Current, Ontario. During the PIC, several information panels were displayed to provide the public with information about the project. The purpose of the PIC was to: present the results of environmental studies and evaluations of the siting of the wind turbine and transmission line route; the assessment of project impacts on the environment with potential mitigation measures and identification of residual effects; the specific information on the project, and to provide a venue for questions and for providing feedback to NPI about the project. Details of the PIC proceedings as well as comments provided by the public are included in Section 4.6.4 and in *Appendix B of the ESR (July 2009)*.

4.6 Public Information Centre under Renewable Energy Approvals Process

First REA Public Information Centre (PIC#4)

The first PIC under the REA process was held on Monday, March 22, 2010 from 7:00 p.m. to 10:00 p.m. at the Royal Canadian Legion No. 177 in the Town of Little Current. This PIC was a requirement under *Ontario Regulation 359/09 – Renewable Energy Approval (REA) under the Green Energy Act*. The purpose of this PIC was to present the proposed project, including the wind turbine layout, the REA process and to respond to public questions, issues and concerns. This PIC was the final public meeting required under the REA process.

The PIC was organized as a drop-in centre. In total, 118 participants signed in. Overall the PIC was well received. A copy of the completed comment sheets and a copy of a sign-in sheet are included in **Appendix C** of this report.

During the PIC, twenty-three information panels were displayed to provide the public with information about the project (**see Appendix C**).

Representatives from NPI, Trillium Corporate Communications Inc., CG Group, Moving Red Canoe, Aerocoustics Engineering and Dillon Consulting were present at the final PIC to answer questions about the proposed project and to provide additional project information to the public. Among the PIC attendees, there were representatives from the Municipality of The Northeastern Manitoulin and the Islands, First Nations', local business owners, members of non-profit membership association and media. The remainder of the attendants were residents of the area.

The most common concerns expressed at the PIC by residents were:

- Visual impacts;
- Impacts on bodies of water;
- Geology and ground water flow;
- Power line routing;
- Impacts to wildlife, birds and bats;
- Wind turbine setbacks;
- Human and animal health and safety;
- Local Economy (tourism);
- Property Values; and,
- Location of the turbines.

During the PIC, a statement was provided by UCCM¹ (Chief Shining Turtle, Whitefish River First Nation chief and UCCM tribal chair) the UCCM indicated that "A *legal requirement of the Ontario government, as proclaimed by the Supreme Court of Canada, consultation has been ignored and continues to be ignored*" and that "as long as the government of Ontario continues to ignore the First Nations, the chiefs will remain opposed to the project." The statement provided by the UCCM was addressed by NPI's President Mr. John Brace who indicated that NPI would be pleased to work with the Manitoulin Island First Nation to resolve any issues and concerns regarding the proposed project.

A copy of a media release summarizing the opinions of the Aboriginal leaders of Manitoulin First Nation communities and the local residents is provided in **Appendix E**.

Summary of correspondence and communications with the Aboriginal communities, agencies and organizations is provided in *Appendix J of the 2009 ESR* as well as in the Aboriginal Communications Log provided in **Appendix A** of this report. **Section 3.7** below further outlines the consultation process between Aboriginal communities and NPI to summarize the long history of Aboriginal consultation which ultimately concluded in a 50/50 partnership.

Final REA Public Information Centre (PIC#5)

This additional PIC was held on Wednesday, May 18, 2010 from 7:00 p.m. to 9:00 p.m. at the Royal Canadian Legion No. 177 in the Town of Little Current. This PIC was held

¹ United Chiefs and Councils of Manitoulin (UCCM) became United Chiefs and Councils of Mnidoo Mnising (UCCMM) in 2011 with the formation of Mnidoo Mnising Power Company. Both UCCM and UCCMM are referenced in the text depending on the time period under discussion.

to inform stakeholders of the changes that had been made to the project since the last PIC in 2010.

The changes to the project included:

- The use of 100 metre wind turbine towers instead of 80 metre towers;
- A reduction in the number of wind turbines from 43 to 24; and
- The partnership with MMP.

The PIC was organized as a drop-in centre. In total, 89 participants signed in. Overall the PIC was well received. A copy of the completed comment sheets and a copy of a sign-in sheet are included in **Appendix C** of this report.

During the PIC, thirty-seven information panels were displayed to provide the public with information about the project (**see Appendix C**).

Representatives from NPI, Aerocoustics Engineering, White Construction and Dillon Consulting were present at the PIC to answer questions about the proposed project and to provide additional project information to the public. Among the PIC attendees, there were representatives from NEMI, First Nations', local business owners, members of non-profit membership association and media. The remainder of the attendants were residents of the area.

The most common concerns expressed at the PIC by residents were similar to the last PIC:

- Visual impacts;
- Impacts on bodies of water;
- Geology and ground water flow;
- Power line routing;
- Impacts to wildlife, birds and bats;
- Wind turbine setbacks;
- Human and animal health and safety;
- Local Economy (tourism);
- Property Values; and,
- Location of the turbines.

In addition to comments received regarding concerns over the project and the potential impacts there were many positive comments that were received in support of renewable energy and the project. All comments that required responses were followed-up by NPI. Please see **Appendix C** for correspondence.

4.7 Consultation Regarding Hunt Camps

On March 19, 2010 the Director of the EEAB advised NPI that it did not seem likely that a number of proposed hunt camps in the area would be used for overnight accommodation and thus would not be considered as noise receptors as defined in the REA regulation.

After receipt of this letter NPI requested clarification and on March 22, 2010, the Director of the EEAB sent a letter of clarification, stating that “It is not intended that the definition of noise receptor would apply in respect of things like hunt camps (e.g. a building or structure that was used for limited duration in any given month to facilitate hunting or fishing activities)”. Clarification was given on what defined a noise receptor. In this letter the MOE requested that NPI make an effort to consult with the landowners who had taken out building permits on their properties after the layout was released in July 2009.

NPI has made various attempts at contacting the landowners who took out building permits adjacent to turbines #21 and #28 to discuss the nature of the proposed structures. When contacted the landowners with the building permits were not willing to share their plans as to the proposed structure and their facilities so NPI could identify it as a sensitive noise receptor or not. To date these structures have not been constructed and NEMI has continued to extend these permits. Both hunt camp building permits will expire at the end of July, 2011.

4.8 Consultation with Municipality and Local Authorities

The Municipality of Northeastern Manitoulin and the Islands (NEMI) has received notices regarding the proposed project and the PICs that have been held as mentioned above in **Section 3.3**. Letters to Councilors were mailed out on November 30, 2010; copies can be found in **Appendix B**. Below is a summary of the consultation to date with NEMI.

2004 Presentation to NEMI Council

On August 12th, 2004 NPI provided information on the project to the NEMI council (*Appendix B of the ESR, July 2009*). In this presentation to NEMI Council, NPI addressed the following issues regarding the proposed project that were expressed by the community:

- Local economic benefits;
- Visual and noise impacts;
- Impacts on natural environment; and
- Impacts on tourism.

2009 Notice of Project Restart

NPI sent a copy of the June 2009 letter (*Appendix B of the ESR, July 2009*) to the Mayor, Councilors and the Clerk of NEMI advising them of the project restart.

2009 Notice of Completion and Release of Environmental Screening Report (ESR)

In July 2009, a letter of ESR Notice of Completion (*Appendix B of the ESR, July 2009*) had been issued to the NEMI that the environmental screening for the project had been completed. A written copy of the ESR was made available at the NEMI Clerk's Office.

2009 Municipal Consultation Form under REA

In December 2009, in fulfillment of the REA requirements, a letter was sent to NEMI accompanying a submission of the Municipal Consultation Form. A copy of this form is included in **Appendix B** of this report. NPI provided assistance to NEMI officials in completion of the municipal consultation form by developing a municipal consultation form guide. A copy of this guide can be found in **Appendix B** of this report.

On March 8th, 2010 NPI received comments on the Municipal Consultation Form from NEMI. NPI provided a response to these comments on May 5th, 2010. Copies of this correspondence are provided in **Appendix B** of this report.

The Consultation form was signed by NEMI although NEMI did state that not enough information had been provided by NPI to comment on particular aspects of the project as NEMI was sent the municipal consultation form prior to having seen the draft REA reports. In order to resolve this issue NPI provided NEMI with a copy of the draft REA reports. Further consultation with NEMI reflected that most, if not all, of their concerns had been addressed through the draft REA reports. NEMI requested that when available, engineering level information be sent to them for review. NPI has kept the lines of communication with the CAO of NEMI who, along with council is kept up to date as the project advances.

Roads Users Agreement

On April 22, 2010, NPI and NEMI signed a Road Users Agreement, after almost 18 months of negotiations. The approved Road Users Agreement requires that all road allowance plans are reviewed by the NEMI Public Works Manager prior to finalization. NPI has also come to an Agreement with NEMI with respect to the building permit application review fee. NPI will consult with NEMI throughout the design and construction process. Please see Appendix B for the Agreement.

2010 Notice of Final PIC under REA

In December 2009, in fulfillment of the REA requirements, a letter was sent to NEMI providing information about the final PIC. A copy of this notification can be found in **Appendix B** of this report.

2010 Draft Renewable Energy Approval Submission

In January, 2010 NPI had also provided a Draft Renewable Energy Approval (REA) submission package to NEMI that included drafts of the following reports:

- Project Description Report;
- Construction Schedule, supplementary information to the Construction Plan Report in the ESR 2009;
- Community Response Plan and Environmental Management Plan, supplementary information to the Design and Operations Report; and,
- Decommissioning Plan Report.

2010 Letters to Newly Elected NEMI Council

In November, 2010 NPI wrote letters to the NEMI Mayor-elect and newly elected Councilors, introducing them to the McLean's Mountain Wind Farm project and to offer to meet them individually to discuss the project.

2011 Notice of Additional PIC under REA

In April, 2011 a letter was sent to NEMI as an invitation to the additional PIC. A copy of this notification can be found in **Appendix B**.

2011 Notice of Submission of the REA Application

In September 2011 NPI sent a letter to NEMI advising of the Submission of the REA Application to the Director of the EEAB at the MOE. This letter will be issued to NEMI once the Submission of the REA Application is reviewed and deemed complete by the MOE.

4.9 Agency Notification and Consultation

4.9.1 Summary of Federal Agency Consultation

A copy of the June 2009 project restart letter that was sent to federal agencies is contained in *Appendix B of the ESR (July 2009)*. A summary of correspondence/discussions with federal agencies is found in Section 4.4.1, Table 4-1 of *the ESR (July 2009)*. Federal agencies were also sent a notice in July 2009 advising them of the release of the Notice of Completion and this final ESR (*Appendix B of the ESR, July 2009*).

On April 15, 2010 Dillon Consulting sent a letter to Environment Canada (EC) to follow up on previous communications with EC staff, specifically regarding EC's comments made under the previous EA process. A copy of the letter is provided in **Appendix B** of this report.

4.10 Provincial Agencies

Provincial agencies that have been notified of the project under the requirements of the *Canadian Environmental Assessment Act. (Ontario Regulation 116/01)* include:

- Ministry of Natural Resources
- Ontario Provincial Police
 - Northeast Region Headquarters
- Hydro One Inc.
- iSERV Ontario - IT Service Delivery
- Ontario Ministry of Aboriginal Affairs
 - Policy & Relationship Branch
 - Policy and Relationships Branch
 - Negotiations Branch
- Ministry of the Attorney General
- Ministry of Culture
 - Heritage Operations Section, Heritage and Libraries Branch, Ministry of Culture
- Ministry of Energy
 - Renewable Energy Supply
 - Strategic Policy Branch, Conservation & Strategic Policy Division
- Ontario Power Generation
- Ministry of Tourism and Recreation
- Ministry of Municipal Affairs and Housing
- Ministry of Northern Development and Mines
 - Policy Analysis & Development, Corporate Policy Secretariat
- Ministry of the Environment
 - Sudbury Regional Office
- Ministry of Natural Resources
- Ontario Ministry of Aboriginal Affairs
- Ontario Parks

A copy of the June 2009 project restart letter that was sent to provincial agencies is contained in *Appendix B of the ESR (July 2009)*. A summary of the contact/meetings, with provincial agencies is found below in Section 4.4.2 Table 4-2 of *the ESR (July 2009)*. Provincial agencies were notified in July 2009 of the release of the ESR Notice of Completion *Appendix B of the ESR (July 2009)*.

Provincial agencies that have been extensively consulted with on the proposed project under the REA requirements have included the Ontario Ministry of Environment (MOE), the Ministry of Natural Resources (MNR) and the Ontario Ministry of Culture (MTC).

MNR Notice of Draft REA Submission Package

On February 23rd, 2010 a letter accompanied by a copy of the Draft REA Submission Package that included that *Draft Environmental Management and Protection Plan* (a part of the *Design and Operation Plan* under REA) was sent to the Ministry of Natural Resources' (MNR) Office asking for their comments. This submission also included a letter prepared by Dillon Consulting with responses to MNR comments regarding the potential impacts of the McLean's Mountain Wind Farm on endangered or threatened species and their habitats. Multiple follow-up calls were made to the MNR in 2010 regarding their review of the submission package.

MTC Notice of Draft REA Submission Package

On December 23rd, 2009 Dr. Julig of Laurentian University, on behalf of NPI, submitted a letter to the Ministry of Culture and a copy of the McLean's Mountain Wind Farm Stage I Archaeological Report asking for the MTC's review and comments. Subsequently on January 15, 2010 NPI received a clearance letter from the MOC indicating that the MTC concurs with the Archaeological Assessment Stage I Report recommendations.

2010 Notice of Final PIC under REA

In December 2009, in fulfillment of the REA requirements, a letter was sent to the MOE providing information about the final PIC. A copy of this notification can be found in **Appendix B** of this report.

MOE Notice of Draft REA Submission Package

On February 23rd, 2010 a letter accompanied by a copy of the Draft REA Submission Package was sent to the Ministry's Sudbury District Office indicating that the Draft REA Submission Package was released on January 18, 2010 for a 60-day for public review period. A copy of the same package was also provided to the MOE, Environmental Assessment Approvals Branch in Toronto. Copy of notification of this submission can be found in **Appendix B** of this report.

MOE Notice of REA Application Submission

On May 11th 2010 letters accompanying the completed *Application For Approval of a Renewable Energy Project* for the McLean's Mountain Wind Farm project were sent to the Director of the Ministry of the Environment, Environmental Assessments and Approvals Branch on Toronto as well as to the district MOE office.

MNR Comments on REA Submission Package

Conference calls were held with the MNR (Sudbury District) during Fall 2010 including calls on October 1 and December 14, 2010. The purpose of these calls was to discuss the REA submission package that was sent to the MNR in February 2011. As a result of these calls, Dillon and NPI were advised to prepare a full set of the Natural Heritage Reports as required under the REA regulations.

A revised Natural Heritage report package was submitted to the MNR in early April 2011. A meeting/conference call was held with the MNR to discuss the reports on May 2, June 7, and June 20 2011. A site visit was then held with the MNR on June 24. We are currently awaiting MNR sign-off.

MTC Review and Acceptance of Stage 1 and Stage 2 Archaeological Assessments

A Stage 1 Archaeological Assessment was completed and submitted to MTC on December 30, 2009. On January 15, 2010 NPI received a letter of review and acceptance into the provincial register for the assessment.

A Stage 2 Archaeological Assessment was submitted on August 9, 2010. A letter of review and acceptance into the provincial register of reports was received by NPI on August 18th, 2010. Due to changes in the location of project components an addendum was submitted on January 26, 2011. MTC reviewed and accepted the reports into the provincial register on February 1, 2011. Further project layout changes to avoid wetland features required the submission of an additional Stage 2 Archaeological Assessment on June 27, 2011. This report is currently on the expedited review list. Please see **Appendix B** for clearance letters.

MTC Review of Cultural Heritage Screening

MTC comments on an initial cultural heritage assessment that was submitted in September 2010 were received by NPI on March 18, 2011. MTC had requested that in addition to a written summary of the project, that NPI complete a "Check Sheet for Environmental Assessments" or address all of the topics in the checklist. In response to this comment, an updated cultural heritage assessment was prepared and submitted to MTC on April 4, 2011.

2011 Notice of Additional PIC under REA

In April, 2011 a letter was sent to the MOE as an invitation to the additional PIC. A copy of this notification can be found in **Appendix B**.

2011 MOE Notice of REA Application Submission

In September, 2011 letters will accompany the completed *Application For Approval of a Renewable Energy Project* for the McLean's Mountain Wind Farm project will be sent to the Director if the Ministry of the Environment, Environmental Assessments and Approvals Branch on Toronto as well as to the district MOE office.

A summary of notable consultation with provincial agencies under REA as identified above is found below in **Table 3-1**. All correspondence received from the provincial agencies under the REA process is included in **Appendix B** of this report.

2011 MNR Notice of Confirmation of the Natural Heritage Assessment

On September 9, 2011 NPI received a letter from the District Manager, Sudbury to confirm review and acceptance of the Natural Heritage Assessment package submitted on September 1, 2011.

Table 3-1: Summary of Meetings/Contact with Provincial Agencies under REA

| Name | Group/Affiliation | Date of Contact | Topic |
|--------------|---|-------------------|--|
| Eric Cobb | Ontario Ministry of Natural Resources, Sudbury District District Planner | February 23, 2010 | <ul style="list-style-type: none"> Dillon sends a letter with responses to MNR Comments Regarding Potential Impacts of the McLean's Mountain Wind Farm on Endangered or Threatened Species and Their Habitats NPI sends a copy of <i>Northland Power Inc's McLean's Mountain Wind Farm Renewable Energy Approval (REA) Draft Submission Package</i> |
| | | April 4, 2010 | <ul style="list-style-type: none"> MNR provides comments on the <i>Northland Power Inc's McLean's Mountain Wind Farm Renewable Energy Approval (REA) Draft Submission Package</i> document |
| | | May 7, 2010 | <ul style="list-style-type: none"> Dillon sends a letter (via e-mail and courier) in response to preliminary MNR comments which were received from Eric Cobb on the draft REA submission package for Northland Power's Mclean's Mountain Wind Farm, which was submitted to the MNR on February 23, 2010. |
| David Bishop | Ontario Ministry of Natural Resources, Espanola District | April 22, 2010 | <ul style="list-style-type: none"> Dillon sends Work Permit Application – Marine Cable Crossing of Little Current Channel of Lake Huron. |
| Paula Allen | Ontario Ministry of the Environment, Sudbury District Office Environmental Planner, EA Coordinator | February 23, 2010 | <ul style="list-style-type: none"> NPI sends a letter and a copy of <i>Northland Power Inc's McLean's Mountain Wind Farm Renewable Energy Approval (REA) Draft Submission Package</i>. |
| Doris Dumais | Ontario Ministry of the Environment, Environmental Assessment and Approvals Branch Director | January 21, 2010 | <p>NPI sends a Draft Aboriginal Consultation Package that includes:</p> <ul style="list-style-type: none"> First Nations and Métis Consultation Log Dated January 19th, 2010 First Nations and Métis Consultation Materials (Letter Correspondence and E-mail Correspondence) Correspondence with Government Agencies Regarding First Nations and Métis Consultation Additional Information |
| | | March 19, 2010 | <ul style="list-style-type: none"> MOE sends letter regarding Noise Receptors and Vacant Lots (requirements for hunt camps and centre of vacant lot setbacks) |
| | | March 22, 2010 | <ul style="list-style-type: none"> MOE send a letter of clarification regarding Noise Receptors and Vacant Lots. The letter clarifies that the definition of noise receptors |

| Name | Group/Affiliation | Date of Contact | Topic |
|---------------------|---|-------------------------------|---|
| | | | would not apply to hunt camps, which do not have infrastructure such as electricity, potable water supply and sanitary sewage disposal. |
| | | August 3, 2010 | <ul style="list-style-type: none"> MOE sends a letter to clarify NPI questions regarding vacant lot setback distances and well as crystallization dates with respect to wind turbine layout and noise assessment. |
| Sandra Guido | Ontario Ministry of the Environment, Environmental Assessment and Approvals Branch Senior Program Support Coordinator | November 17, 2010 | <ul style="list-style-type: none"> Dillon sends a Project Description Report asking for the Crown to determine which Aboriginal communities should be consulted. |
| | | March 30, 2010 | <ul style="list-style-type: none"> Confirmed receipt of <i>Northland Power Inc's McLean's Mountain Wind Farm Renewable Energy Approval (REA) Draft Submission Package</i> |
| | | April 16 th , 2010 | <ul style="list-style-type: none"> Dillon received an e-mail from Sandra Guido (MOE) with attached letter from Doris Dumais (MOE, EAAB) providing a list of Aboriginal Communities to be consulted for the McLean's Mountain Wind Project |
| Joe de Laronde | Ontario Ministry of the Environment, Aboriginal Affairs Branch | February 19, 2010 | <ul style="list-style-type: none"> Provided comments regarding the <i>Northland Power Inc's McLean's Mountain Wind Farm Project Description Report</i> and permits required by the MNR Requested more information regarding the proposed underwater cable including maps. |
| Paige Campbell | Ontario Ministry of Culture Acting Archaeology Review Officer | December 23, 2009 | <ul style="list-style-type: none"> MTC provided a clearance letter to NPI indicating that the MTC concurs with the Archaeological Assessment Stage I Report recommendations. |
| | Ontario Ministry of Culture Acting Archaeology Review Officer | February 1, 2011 | <ul style="list-style-type: none"> MTC sends a letter of review and acceptance into the provincial register of reports the Stage 2 archeological assessment report addendum for the McLean's Mountain Wind Farm. |
| Yu-Chao (Tom) Hwang | Hydro One Networks Inc. (HONI) - Asset Management, TX Sustainment Investment Planning | March 24, 2010 | <ul style="list-style-type: none"> HONI confirmed that Hydro One Transmission facilities are located within immediate vicinity of the proposed site in the study area. |

| Name | Group/Affiliation | Date of Contact | Topic |
|---|---|--|--|
| Bob Robinson Eric Cobb, Christine Selinger Bruce Richard Jim Beal | Ontario Ministry of Natural Resources (Sudbury Region, Espanola District) | Oct. 1 and Dec. 14, 2010 May 2, June 7 & 20, 2011 | <ul style="list-style-type: none"> Multiple discussions were held with the MNR regarding the Natural Heritage Report package in regards to potential project effects. |

4.11 Aboriginal Consultation

4.11.1 Aboriginal Consultation under the Ontario Regulation 116/01 Process

Given the location of the project, the early involvement of Aboriginal communities and organizations with an interest in the project was identified as a priority.

The following resources were used in developing and implementing NPI's Aboriginal (First Nations and Métis) consultation process:

- Identify Aboriginal communities with an interest or within proximity of the project area;
- Correspondence received from government agencies, including Ministry of the Environment, Indian and Northern Affairs Canada (INAC) - Specific Claims, Assessment and Historical Research Directorate;
- Discussions with Ontario Ministry of Aboriginal Affairs (OMAA);
- Correspondence received from Aboriginal communities and organizations;
- Identified Aboriginal community and Aboriginal organization websites (where available);
- INAC Specific Claims Public Information Summary Reports;
- INAC Canada Comprehensive Claims Information per INAC website;
- Ontario Power Authority "Best Practices, Good Business: Consulting with First Nation and Métis Communities"; OMAA "Draft Guidelines for Ministries on Consultation with Aboriginal Peoples Related to Aboriginal Rights and Treaty Rights"; Government of Canada "Aboriginal Consultation and Accommodation: Interim Guidelines for Federal Officials to Fulfill the Legal Duty to Consult"; and
- Other selected publicly available information (media reports, court records, government agency websites, internet searches, etc.).

At the outset of the project in 2004, NPI identified a list of Aboriginal communities contacted regarding the project. The communities included those primarily located on Manitoulin Island and which were located closest to the project location and included:

- Aundeck Omni Kaning (Sucker Creek);
- Sheguiandah First Nation;

- M'Chigeeng (West Bay) First Nation;
- Whitefish River First Nation;
- Wikwemikong First Nation;
- Zhiibaahaasing First Nation;
- United Chiefs and Councils of Manitoulin;
- Union of Ontario Indians;
- Ontario Natives Women's Association; and
- Métis Nation of Ontario.

In 2009 and the restart of the project, the role of the Crown in consultation with Aboriginal communities became clearer, and NPI initiated a more formal consultation program with broader group of Aboriginal communities, including those on the North Shore and organizations including distribution of regulatory notices and invitations to PICs. Discussions between UCCM and the North Shore First Nation communities resulted in the North Shore First Nation communities stating that the interests in the project were clearly with the First Nation communities on Manitoulin Island. From this point on consultation efforts concentrated on the UCCM and other Island First Nation communities.

In June 2009, INAC advised NPI that the Sagamok Anishnewbek First Nation and the OMAA advised NPI that the Serpent River First Nation as well as the Métis Consultation Unit and Métis Council in Sudbury should be consulted. NPI initiated contact with the aforementioned First Nation communities by sending an introductory letter and the ESR Notice of Completion.

Four First Nations communities expressed interest in meeting with NPI. NPI met with representatives from the four (4) First Nations communities, which include:

- Aundeck Omnikaning First Nation;
- Sheguiandah First Nation;
- Wikwemikong First Nation; and
- M'Chigeeng First Nation.

These meetings provided the opportunity for NPI and the Aboriginal communities to engage in a meaningful way and to discuss the proposed project in general and specific terms, as well as the communities' concerns and interests with regard to the project and the project area, the consultation process, applicable regulatory processes, and other related matters. Details are provided in the *Aboriginal Communications Log* included in **Appendix A** of this report.

Discussions with Specific Aboriginal Communities and Organizations

NPI met with and contacted Aboriginal communities and organizations several times, formally and informally, throughout the course of the project and will continue to do so.

Presented below is a summary of key items discussed with specific communities and organizations to date. Please see **Appendix A** for the Aboriginal Consultation Log.

Aundeck Omnikaning First Nation

Talks with this First Nation began in July 2004 during a meeting to discuss the project. Employment opportunities were raised and a working relationship was developed with the First Nation's construction company for water and snow removal services at the time of core sample drilling. Employment opportunities during the construction phase of the project were also discussed.

Wikwemikong First Nation

NPI met with this First Nation in June 2006 to discuss the project. Potential treaty issues were identified for further discussion and from July to October 2006, NPI made several visits to the Wikwemikong band office to discuss treaty and non-treaty items.

In December 2006 and April 2007, NPI met with the community to discuss the project's progress and concerns about the capacity of the local distribution line.

The relationship continued to build in 2007 when Wikwemikong First Nation invited NPI to attend the First Nations Energy Alliance conference at Casino Rama in February.

M'Chigeeng First Nation

In April 2007, NPI visited this First Nation to discuss the issue of available capacity on the local distribution system and, as a result, NPI and Chief Corbiere visited the Minister of Energy's office to appeal for upgrades to the system.

Sheguiandah First Nation

At a meeting in June 2008, the Sheguiandah First Nation expressed support for the McLean's Mountain Wind Farm and NPI, in agreement with a recommendation of the Chief, is to consider employing young members of the Nation during project construction. It was also agreed that a community forum would be held and the erection of turbines on ceremonial lands was discussed.

4.11.2 REA Aboriginal Consultation

Table 3-2 summarizes the Aboriginal communities NPI has consulted with over the course of the project. NPI did not receive from the MOE the formal list of aboriginal communities to be consulted with until April 2010. This was after NPI release the draft REA documentation package in January 2010. As documented further below, NPI then sent the additional communities identified by the MOE information about the project and a request for consultation.

The Aboriginal communities confirmed by the MOE (letter dated April 15, 2010, **Appendix A**) to be consulted on this project include:

- Aundeck Omni-kaning First Nation;
- Sheguiandaah First Nation;
- M'Chigeeng First Nation;
- Sheshegwaning First Nation;
- Zhiibaahaaasing First Nation;
- Wikemikong First Nation;
- White Fish River First Nation;
- Sagamok Anishnawbek First Nation;
- Serpent River First Nation;
- North Channel Métis Council;
- White Fish Lake First Nation;
- Sudbury Métis Council;
- Métis Council of Ontario; and
- Chiefs of Ontario.

Most of the REA consultation activities with First Nation communities were through the United Chiefs and Councils of Manitoulin (UCCM). NPI first met with the UCCM previous to the commencement of the REA process. At this meeting the UCCM indicated that they would only engage with the crown with respect to the proposal. UCCM indicated they felt they had not adequately been consulted through the EA process.

For a complete history of the consultation and eventual partnership with UCCM/UCCMM please see **Section 3.12.3**.

NPI is committed to the continuation of discussions and consultation with Aboriginal communities that have asserted an interest in the project and project area. These consultations will include, but are not limited to:

- Continuing to meet and engage with the Aboriginal communities to better understand their interests in the area, to address any material concerns and to keep them apprised of the Project's development;
- Assessing need, and where appropriate providing capacity funding, for Aboriginal communities to effectively participate in the consultation process;
- Continuing attempts to determine potentially affected traditional land use and archaeological interests in the project area. Where necessary, NPI will formulate appropriate mitigation, approval and operation plans with affected Aboriginal communities; and,
- Identifying employment and contracting opportunities for Aboriginal communities.

Table 3-2: Consultation Summary with Aboriginal Communities and Organizations

| | 2004 Consultation <i>(based on First Nations within 100 km)</i> | 2009 Project Re-Start Consultation <i>(based on previous and letter from INAC/OMAA)</i> | 2010-Present Consultation <i>(based on MOE recommendation letter)</i> |
|--|---|---|---|
| Aundeck Omni-kaning First Nation (UCCMM) | ✓ | ✓ | ✓ |
| Sheguiandah First Nation (UCCMM) | ✓ | ✓ | ✓ |
| M'Chigeeng First Nation (UCCMM) | ✓ | ✓ | ✓ |
| Sheshegwaning First Nation (UCCMM) | | | ✓ |
| Whitefish River First Nation (UCCMM) | ✓ | ✓ | ✓ |
| Zhiibaahaasing First Nation (UCCMM) | ✓ | ✓ | ✓ |
| UCCM/UCCMM | ✓ | ✓ | ✓ |
| Sagamok Anishnawbek First Nation | | ✓ | ✓ |
| Serpent River First Nation | | ✓ | ✓ |
| Wikwemikong First Nation | ✓ | ✓ | ✓ |
| White Fish Lake First Nation | | | ✓ |
| North Channel Métis Council | | | ✓ |
| Sudbury Métis Council | | ✓ | ✓ |
| Métis Nation of Ontario | ✓ | ✓ | ✓ |
| Chiefs of Ontario | | | ✓ |
| Union of Ontario Indians | ✓ | ✓ | |
| Ontario Natives Women's Association | | ✓ | ✓ |

The following provides further details regarding the notifications and consultations conducted with Aboriginal communities as part of the REA process.

Release of Project Description Report – REA Phase

In fulfillment of the newly established REA requirements, on December 1st, 2009, NPI sent a letter and Project Description Report to the following Aboriginal communities and organizations requesting information that should be considered in the planning of the proposed project, in particular, any information that the identified Aboriginal communities and organizations may have had regarding potential adverse impacts of the project on constitutionally protected aboriginal or treaty rights and recommendations for measures to mitigate these adverse impacts. The list was shortened, as explained earlier, due to discussions between First Nations whereby the First Nations of the North Shore decided that the interest should be with the First Nations, on the island, whose traditional lands were affected by the project. A copy of this letter is provided in **Appendix A** of this report.

- Aundeck Omni Kaning (AOK)
- Sheguiandah First Nation;
- Whitefish River First Nation;
- M'Chigeeng (West Bay) First Nation;
- Wikwemikong First Nation;
- United Chiefs and Councils of Manitoulin; and
- Métis Nation of Ontario.

Draft REA Distribution

As of January 18, 2010, no Aboriginal communities and organizations had provided feedback to NPI as a result of the December 1, 2009 letter. In continued fulfillment of the REA requirements, on January 18th, 2010 NPI sent written copies of the Draft REA Submission Package along with letters to the above noted Aboriginal communities and organizations informing them NPI had not received any responses from Aboriginal communities and organizations to the December 1, 2009 letter and that a Draft REA Submission Package was available for a 60-day review period as of January 18, 2010. A copy of this letter is provided in **Appendix A** of this report.

Notice of Final PIC

On February 17, 2010, NPI issued letters with a notice of the final Public Information Centre planned under the REA process and scheduled for Monday, March 22, 2010. This letter also reminded recipients that the 60-day review period of the Draft REA Submission Package was ongoing and would conclude on March 18, 2010. A copy of this letter is included in **Appendix A** of this report and was sent to the above noted Aboriginal communities and organizations:

Further Identification of Additional Aboriginal Communities and Organizations

Subsequent to this distribution, on April 15, 2010, the Director of the MOE's EEAB Branch responded to an NPI request for a list of Aboriginal communities to be consulted under the REA. A majority of the Aboriginal communities and organizations identified by the MOE were already on the project mailing list and had been contacted at various times throughout the project. The new Aboriginal communities and organizations were the North Channel Métis Council and the Whitefish Lake First Nation. The letter also reconfirmed the need to consult some Aboriginal communities and organizations that had last been corresponded with in July 2009.

As a result, on May 11, 2010, NPI sent letters to the additional Aboriginal communities and organizations seeking their potential interest in the project and followed up with phone calls to these groups. NPI then sent hard copies of the Draft PDR to these additional contacts on July 24, 2010, ensuring that all Aboriginal communities and organizations received the PDR. The additional Aboriginal communities and organizations were as follows:

- Sheshegwaning First Nation;
- Zhiibaahaasing First Nation;
- Whitefish Lake First Nation;
- Sagamok Anishnawbek First Nation;
- Serpent River First Nation;
- North Channel Métis Council;
- Sudbury Métis Council;
- Chiefs of Ontario; and,
- Union of Ontario Indians.

Copies of these letters are provided in **Appendix A** of this report.

The MOE also identified the Ontario Native Women's Association as an organization that should be consulted with. They were provided with this information as part of the July 24, 2010 mailing to Aboriginal communities and organizations.

4.11.3 The Forming of the NPI/Mnido Mnisng Power Corporation Partnership

Initial contact was made with UCCM in June 4th, 2009 at a meeting in Sheguiandah with the Chiefs of the United Chiefs and Councils of Manitoulin (UCCM), to later become United Chiefs and Councils of Mnido Mnisng (UCCMM). Membership of UCCM include M'Chigeeng First Nation; Sheguiandah First Nation; Sheshegwaning First Nation; Aundeck-Omni-Kaning First Nation; Whitefish River First Nation; and Zhiibaahaasing First Nation.

The Chiefs of the UCCM initially laid out clearly that they were not interested in engaging with developers but only with government, in Nation to Nation discussions on any future development issues as to their treaty rights on Manitoulin Island.

After this 2009 meeting representatives of NPI attended the “Our Relations” conference held February 9-10, 2010 on Birch Island. This conference had a high level of showing from government agencies and industry. Following the conference a UCCM meeting was held and the UCCM Chiefs decided to stand together as a group to support renewable energy on Manitoulin Island.

On July 8, 2010 UCCM Chiefs met to discuss renewable energy on Manitoulin Island and decided to explore alternative approaches towards renewable energy projects. On July 14, 2010 UCCM met with NPI to propose a partnership. On July 22, 2010 UCCM and NPI met again to further discuss the partnership and agreed to move forward by the means of a Letter of Intent. NPI and UCCM agreed to partner on a 50/50 basis for this project and for future projects on UCCM traditional land.

Partnership negotiations began in September 2010. On October 4th, 2010 a ceremony was held by UCCM and NPI on the land led by UCCM elders. After three months of negotiations on December 2, 2010, the United Chiefs and Councils of Mnidoo Mnising (UCCMM) launched Mnidoo Mnising Power Corporation, the vehicle to drive renewable energy projects on Mnidoo Mnising (Manitoulin Island) and ensure viable clean energy alternatives for First Nation communities and positive future for First Nation youth. With the incorporation of Mnidoo Mnising Power, UCCM, became United Chiefs and Councils of Mnidoo Mnising, UCCMM.

On December 10, 2011 partnership negotiations concluded and resulted in the following agreements signed between UCCMM and Northland:

- Limited Partnership Agreement;
- Shareholders Agreement;
- Memorandum of Understanding;
- Mnidoo Mnising Limited Partnership Management Agreement; and
- Northland Management Agreement.

Since the partnership NPI has assisted UCCMM in securing financing for their participation. NPI has also assisted the M’Chigeeng First Nation through municipal meetings, the grand opening of the project and with land option negotiations. NPI has also taught week-long introduction to renewable energy courses in M’Chigeeng and Garden River First Nation communities.

One of the conditions of the partnership, requested by UCCMM, was that NPI not construct 4 turbines in the northern portion of the study area. NPI agreed and the partnership became official on October 4, 2010. A team was formed on February 24,

2011 to scope out long term plans for future development on Mnidoo Mnising (Manitoulin Island) and surrounding Traditional Lands of the UCCMM Nations).

Since the formation of the partnership NPI and UCCMM have undertaken many consultation and public relations events. NPI and UCCMM had a meeting at Queen's Park to discuss actions going forward with the Ministers and their officials. Both parties have participated in youth workshops events and the First Nation long-term Lifetime Achievement Awards ceremonies in North Bay, the attendance at the Ontario Power Authority's Long-Term Energy Plan meetings. NPI has been diligent in learning more about the local Anishnabee through the study of their treaties, local history and frequent interaction in planning as the project develops.

On February 10, 2011, a public news announcement was made to publicize the new partnership.

Notice of Additional Final PIC

On April 20, 2011, NPI issued letters with a notice of the additional final Public Information Centre planned under the REA process and scheduled for Wednesday May 18, 2011. A copy of this letter is included in **Appendix A** of this report and was sent to:

Aboriginal Project Partners

- United Chiefs and Councils of Mnidoo Mnising (Formerly United Chiefs and Councils of Manitoulin), including:
 - Sheshegwaning First Nation;
 - Whitefish River First Nation;
 - Zhiibaahaasing First Nation;
 - Aundeck Omni Kaning First Nation;
 - M'Chigeeng First Nation; and
 - Sheguiandah First Nation.

Aboriginal Non-Partners

- Chiefs of Ontario;
- North Channel Metis Council;
- Ontario Native Women's Association;
- Sagamok Anisknawbek First Nation;
- Serpent River First Nation;
- Sudbury Metis Couil Union of Ontario Indians;
- Whitefish Lake First Nation;
- Métis Nation of Ontario; and
- Wikwemikong First Nation.

Once the Final REA Application Submission is accepted by the MOE, NPI will send letters to the above identified Aboriginal communities and organizations informing them that a REA Application Submission is available for a 30-day review period on the MOE website and the project website. In September 2011 all Aboriginal communities listed above were sent summaries of the Final REA and Natural Heritage Assessment reports.

4.12 Communication Tower Consultation

As per Radio Advisory Board of Canada (RABC) Communication Tower Consultation Guidelines (2007) and as part of the *Canadian Environmental Assessment Act. (Ontario Regulation 116/01)*, the following agencies were sent a letter in June 2009 providing information on the proposed project and a request for any concerns or issues in regards to the project:

- Radio Advisory Board of Canada (RABC);
- Transport Canada- Aerodromes and Air Navigation Unit;
- Royal Canadian Mounted Police – RCMP Communication Towers;
- Department of National Defence – National Defence Communication Towers;
- Environment Canada – Weather Radars;
- NAV Canada – Civilian ATC Radars;
- Department of National Defence – Military Air Defence and ATC Radars;
- Canadian Coast Guard – Vessel Traffic System Radars;
- Natural Resources Canada – Seismological Monitoring Arrays; and
- Government Mobile Communications Office.

A copy of the letter that was sent to agencies is contained in *Appendix B of the ESR (July 2009)*.

A summary of the responses received to date from communications agencies is found in Section 4.5, Table 4-3 of the *Appendix B of the ESR (July 2009)*.

5. RELEASE OF DRAFT AND FINAL REA DOCUMENTS

The following documents were provided in draft form starting on January 18, 2010 for a 60-day public review period:

- Draft Project Description Report;
- Draft Construction Plan Report;
- Draft Design and Operations Plan Report;
- Draft Decommissioning Report;
- Draft Wind Turbine Specifications Report;
- Draft Natural Heritage Assessment Report;
- Draft Water Report;
- Draft Heritage Resource Assessment Report;
- Draft Stage 1 and 2 Archaeological Assessment Reports.

The documents were made available on the project website and in hard copy at the NPI Project Office located in Little Current as well as at NEMI municipal offices. Comments from the MOE, NEMI, landowners and Aboriginal communities have all been incorporated into the final REA submission package.

The project layout has changed considerably based on the comments provided to NPI. Before UCCMM would establish a partnership with NPI they requested that turbines # 1, 2, 3 and 7 be removed from the project. NPI honoured this request and removed those turbines from the layout.

With respect to comments received from stakeholders and landowners NPI made some key adjustments to the project layout to satisfy the requests of the public. There were several individuals that were concerned about the wind farms effects on tourism, especially the change in viewscape from Honora Bay. Based on feedback received from the Final Public Information Centre several of the northernmost wind turbines and the southwestern perimeter wind turbines were removed from the project.

A landowner wrote NPI very concerned about the location of turbine #1 in relation to his residence. NPI, in consultation with UCCMM and this landowner, completely removed this turbine from the project.

The above are just a few documented examples of the open dialogue and consultation NPI has engaged in over the course of the REA process. All 34 letters that NPI received after the Final Public Information Centre, along with their responses can be found in **Appendix B: Notices and Letters**.

The MOE compiled a list of comments that NPI would have to address in order to fulfill Section 13 of O.Reg 359/09. A list of all the MOE comments, their responses and

references to the REA submission document and section number can be found in **Appendix D**.

6. DOCUMENTATION

Documentation of consultation activities throughout the project is provided in the following documents prepared for the proposed project:

- *Northland Power Inc's McLean's Mountain Wind Farm Environmental Screening Report/Environmental Impact Statement (ESR/EIS), July 2009;*
- *Northland Power Inc's McLean's Mountain Wind Farm Renewable Energy Approval (REA) Draft Submission Package ; and the*
- *Northland Power Inc's McLean's Mountain Wind Farm Final Renewable Energy Approval (REA) Application Submission.*

Comments provided by various stakeholders and responses to these comments are recorded in the following documents:

The McLean's Mountain Wind Farm ESR/EIS July, 2009 Comment/Response Table

The McLean's Mountain Wind Farm ESR/EIS (July, 2009) Comment/Response Table included in **Appendix G** of this report documents all of the comments received during the Environmental Assessment process as well it provides responses generated to address these comments.

The McLean's Mountain Wind Farm Comment Response Table received under REA, May 2010

The McLean's Mountain Wind Farm Comment Response Table received under REA (May 2010) included in **Appendix G** of this report documents all of the comments received during the REA process as well it provides responses generated to address these comments.

Individual Responses under REA

Following the submission of the REA Application to the MOE, NPI will provide individual responses to the comments provided via e-mail or mail by the public regarding the proposed project.

All correspondence received from the public under the REA process is included in **Appendix D** of this report.

7. FUTURE CONSULTATION COMMITMENTS

The project owners will continue its stakeholder consultation and communications through project construction and implementation phases. The project owners will provide information releases to the community if new issues arise or if the community has specific concerns. Company representative contact information will be available to the public to address concerns and questions during operations. Planned stakeholder consultation and communications activities will include:

- Web site with updates on project progress;
- The appointment of a construction community liaison officer who shall directly address issues raised by the community during the construction phase of the project;
- Project update bulletin or bulletins as required, mailed or hand delivered to keep area residents apprised of the progress of construction, dates and timing of any traffic disruptions connected with the project and any other matters that may affect or be of interest to area residents and other project stakeholders;
- Newspaper notices regarding traffic disruptions and construction timings of interest;
- Personal consultations as requested or if warranted;
- Meetings with municipal and other local and provincial government authorities;
- Ongoing consultation and meetings with local Aboriginal communities and organizations; and,
- Post-construction: public gathering to present post-construction study results.

MMWLP has also developed a Community Response Plan that will engage and inform the public, Aboriginal communities and the Municipality of project activities in the following manner:

- Project update bulletins will be posted at the Project Office and distributed to the local Aboriginal communities' offices as well as to the Municipal Town Office.
- A McLean's Mountain Wind Farm Project Office was established. The office is located in the Town of Little Current. The project office will serve as central point of information regarding the proposed project. The project office's address is: Northland Power Inc/McLean's Mountain Wind Limited Partnership Little Current Office, McLean's Mountain Wind Farm Office 13 Worthington Street South Side Office, Little Current ON, P0P 1K0.

- All correspondence regarding the proposed project will be directed to the main project contact – the Project Manager who will be available via the project office and may be contacted as follows:

Rick Martin
Senior Manager, Business Development, Renewable Energy
Project Manager,
McLean's Mountain Wind Farm
Northland Power Inc. /McLean's Mountain Wind Limited Partnership
(705) 271-5358 cell
(705) 368-0303 Manitoulin Island Office
rickmartin@northlandpower.ca

**McLean's Mountain Wind Farm -
Renewable Energy Approval (REA)
Application Submission**

Consultation Report

FINAL SUBMISSION

September 2011

Northland Power Inc.

09-1983

Submitted by

**Dillon Consulting
Limited**

Executive Summary

Northland Power Inc. (NPI) and Mnidoo Mnising Power (MMP) together form the McLean's Mountain Wind Limited Partnership (MMWLP). MMWLP proposes to develop the McLean's Mountain Wind Farm (MMWF), located south of the community of Little Current, in the Municipality of Northeastern Manitoulin and the Islands (NEMI); geographic Township of Howland, and the geographic Township of Bidwell in the District of Manitoulin, Ontario and falls within the traditional lands of the Anishnabee of Mnidoo Mnising. The selection of the project's location was based primarily on the wind resource, access to the Provincial transmission system, environmental constraints and local landowner support.

The proposed wind farm (the "project") will consist of 24, 2.5 MW wind turbines with a nameplate capacity of 60 MW. The electricity generated from the wind turbines will be collected through a network of collection grid lines to the on-site transformer. The transformer will step-up the voltage to 115 kV. A 10.3 kilometre transmission line will be installed to connect the project to the Provincial Grid on Goat Island. A section of the transmission line will involve a submarine cable to cross the North Channel to access Goat Island. Each wind turbine will be accessed by a short access road.

The proposed project will require approval under Ontario Regulation 359/09 – Renewable Energy Approval (REA) under the *Green Energy Act*. Based on the REA Regulations, this project is a "Class 4" wind facility. The *Consultation Report* is one component of the REA Application for the Project, and has been written in accordance with Ontario Regulation 359/09, the Ontario Ministry of Natural Resources' (MNR) Approval and Permitting Requirements Document for Renewable Energy Projects (September 2009) and MOE's draft Technical Bulletin Five: Guidance for Preparing the Consultation Report (March 2010).

This *Consultation Report* presents the details of the proponents' consultation with landowners, stakeholders, general public, Agencies, Municipalities and other local authorities, including First Nations. As this project has been on-going for over 8 years, summary tables have been prepared and included as Appendices to this Report to detail the extensive consultation program. Summaries of significant consultation activities are included in the text of the report. This Report outlines the public information centres that were held to provide information and to help gather feedback on the project as well as media and newspaper type consultation activities. Key consultation activities that are on-going and that will continue throughout the construction, operations and decommissioning phases of the project are also discussed.

As this project precedes the REA regulation, this Report provides a high level overview of the consultation activities that occurred under the former EA process. The focus of this Report is on the consultation activities that have occurred since the REA regulations have governed this project. Numerous changes have been made to the project layout as a result of public and Aboriginal community input, including the removal and relocation of turbine locations. The input received and NPI's responses to the received comments have been documented in this *Consultation Report*.

Table of Contents

| | Page |
|--|-------------|
| EXECUTIVE SUMMARY | i |
| 1. INTRODUCTION..... | 1 |
| 2. THE PROPONENT..... | 3 |
| 3. PROPOSED PROJECT LOCATION..... | 4 |
| 4. STAKEHOLDER CONSULTATION..... | 5 |
| 4.1 Consultation Methodology | 5 |
| 4.2 Public Consultation | 6 |
| 4.2.1 Contact List | 6 |
| 4.3 Project Notification | 7 |
| 4.3.1 Project Notification under the Electricity Project Environmental Assessment Regulations (Ontario Regulation 116/01) | 7 |
| 4.4 Project Notification under Ontario Regulation 359/09 – Renewable Energy Approval (REA) under the Green Energy Act | 8 |
| 4.5 Meetings with the Public..... | 9 |
| 4.5.1 Public Information Centres under Regulation 116/01 | 9 |
| 4.6 Public Information Centre under Renewable Energy Approvals Process..... | 10 |
| 4.7 Consultation Regarding Hunt Camps..... | 12 |
| 4.8 Consultation with Municipality and Local Authorities | 13 |
| 4.9 Agency Notification and Consultation | 15 |
| 4.9.1 Summary of Federal Agency Consultation | 15 |
| 4.10 Provincial Agencies..... | 16 |
| 4.11 Aboriginal Consultation | 22 |
| 4.11.1 Aboriginal Consultation under the Ontario Regulation 116/01 Process..... | 22 |
| 4.11.2 REA Aboriginal Consultation..... | 24 |
| 4.11.3 The Forming of the NPI/Mnidoo Mnising Power Corporation Partnership..... | 28 |
| 4.12 Communication Tower Consultation | 31 |
| 5. RELEASE OF DRAFT AND FINAL REA DOCUMENTS | 32 |
| 6. DOCUMENTATION | 33 |
| 7. FUTURE CONSULTATION COMMITMENTS | 34 |

List of Tables

| | |
|------------|--|
| Table 1-1: | Consultation Report Requirements (O.Reg 359/09) |
| Table 3-1 | Summary of Meetings/Contacts with Provincial Agencies under REA |
| Table 3-2 | Consultation Summary with Aboriginal Communities and Organizations |

List of Figures

Figure 3-1 Project Area

List of Appendices

Appendix A: Aboriginal Consultation

- MOE Aboriginal Consultation Letter
- Aboriginal Communications Log
- Correspondence with Aboriginal Communities/Agencies
- Aboriginal Summaries of REA Reports

Appendix B: Project Notifications and Letters

- Project Notification (Notices and Letters)
- Agency Correspondence under Ontario Regulation 359/09 – Renewable Energy Approval (REA) under the Green Energy Act
 - Includes Sept 9, 2011 Ministry of Resources Natural Heritage Assessment Confirmation Letter
- Public Correspondence under Ontario Regulation 359/09 Renewable Energy Approval (REA) under the Green Energy Act
- Municipal Consultation Form
- Councilor Letters
- Road User Agreement

Appendix C: PIC Information

Final Public Information Centre Documents

- Sign-In Sheet
- Handout Materials
 - Display Panel Presentation
 - Additional Reports
- Complete Comment Sheets

Appendix D: MOE Comment and Responses

Comments and Responses

- The McLean's Mountain Wind Farm Comment Response Table received under REA, April 2010, revised November 2010 and finalized July 2011.

Appendix E: Media Releases

- Media Releases on the Proposed Project
- Weekly Newspaper Columns appearing in the Manitoulin Expositor Dec 2010 – September 2011

1. INTRODUCTION

Northland Power Inc. (NPI) and Mnidoo Mnising Power (MMP) together form the McLean's Mountain Wind Limited Partnership (MMWLP). MMWLP proposes to develop the McLean's Mountain Wind Farm (MMWF). The proposed wind farm (the "project") will consist of 24, 2.5 megawatt (MW) wind turbines that will generate 60 MW of electricity. The proposed project will require approval under Ontario Regulation 359/09 – Renewable Energy Approval (REA) under the *Green Energy Act*. Based on the REA Regulations this project is a "Class 4" wind facility. This *Consultation Report* is written in accordance with Ontario Regulation 359/09.

For the purposes of all the environmental studies, twenty-nine (29) potential turbine sites have been identified and examined. Approval is only being sought for the construction of 24 turbines. The five additional turbine sites will only be implemented, should any of the preferred 24 sites become unsuitable for development.

The McLean's Mountain Wind Farm Environmental Study Report (ESR) document was released in July 2009 for a 30-day public review, as part of the former Environmental Assessment process. The ESR document is consistent with the former Environmental Screening provisions of Ontario Regulation 116/01 for a Category B project and with the requirements of the *Canadian Environmental Assessment Act*. The ESR document was developed to assist in the determination of potential environmental effects, including both the social and natural environment, which could result from the proposed project. The ESR document contains additional information that is not required under the REA legislation and can provide further reference as required.

The REA approval process replaces approvals formerly required under the Environmental Assessment Act, Planning Act, and Environmental Protection Act. The project is being developed under the *Green Energy Act* (GEA) Feed-In-Tariff (FIT) program.

Table 1-1 below outlines the requirements of this report as specified under O.Reg 359/09.

Table 1-1: Consultation Report Requirements (O.Reg 359/09)

| <i>Requirements</i> | <i>Section of Report</i> |
|--|--------------------------|
| A summary of communication with any members of the public, aboriginal communities, municipalities, local roads boards and Local Services Boards regarding the project. | 3, 4 |
| Evidence that the information required to be distributed to aboriginal communities under subsection 17 (1) was distributed. | 3 |
| Any information provided by an aboriginal community in response to a request made under paragraph 4 of subsection (17). | 3 |
| Evidence that a consultation form was distributed in accordance with subsection 18 (1). | 3 |
| The consultation form distributed under subsection 18 (1), if any part of it has been completed by a municipality, local roads board or Local Services Board. | 3 |
| A description of whether and how comments from members of the public, aboriginal communities, municipalities, local roads boards and Local Services Boards were considered by the person who is engaging in the project. | 3, 4 |
| A description of whether and how, the documents that were made available under subsection 16 (5) were amended after the final public meeting was held. | 4, Appendix B, D |
| A description of whether and how the proposal to engage in the project was altered in response to comments mentioned. | 4, Appendix B, D |

This *Consultation Report* provides a summary of the consultation process from the inception of the project in 2004 to current and on-going activities.

Technical studies associated with the REA requirements have been completed. In addition to this report the REA submission package includes:

- Project Description Report;
- Construction Plan Report;
- Design and Operations Report;
- Noise Study Report;
- Natural Heritage Assessment Reports (Records Review, Site Investigation, Evaluation of Significance, and Environmental Impact Statement (EIS));
- Water Bodies Assessment Summary Report;
- Archaeological Assessment Reports (Stage 1 and 2) ;
- Cultural Heritage Self-Assessment Report;
- Decommissioning Report;
- Property Line Setback Report;
- Wind Turbine Specification Report;
- Environmental Management and Protection Plan (EMPP);

- Post-Construction Monitoring Plan (PCMP); and
- Supporting Documents.

2. THE PROPONENT

Northland Power Inc. (NPI) is a developer, owner and operator of power generation facilities and is the proponent of the "McLean's Mountain Wind Farm Project". In February 2011, Mnidoo Mnising Power (MMP), a company formed by the United Chiefs and Councils of Mnidoo Mnising (UCCMM), entered into a 50/50 partnership with NPI to form McLean's Mountain Wind Limited Partnership to develop the McLean's Mountain 60 MW Wind Farm project.

NPI's development activities include building, owning and operating wind energy facilities. In the course of developing its wind energy projects, NPI satisfies various environmental approval requirements and obtains regulatory approvals that vary depending on the jurisdiction, project capacity and site location.

The MMP company was formed to lead renewable energy projects on Manitoulin Island in order to protect First Nations' rights, heritage and ensure the future for First Nations' youth.

MMWLP is the primary contact for this project. The MMWLP contact information is as follows:

| | |
|------------------------------|--|
| Full Name of Company: | <u><i>McLean's Mountain Wind Limited Partnership</i></u> |
| Address: | <u><i>30 St. Clair Avenue West, 17th Floor</i></u> <u><i>Toronto, Ontario M4V 3A1</i></u> <u><i>Canada</i></u> |
| Telephone: | <u><i>Local office: (705)-368-0303</i></u> <u><i>mobile: (705)-271-5358</i></u> |
| Prime Contact: | <u><i>Rick Martin, Project Manager</i></u> |
| Email: | <u><i>rickmartin@northlandpower.ca</i></u> |

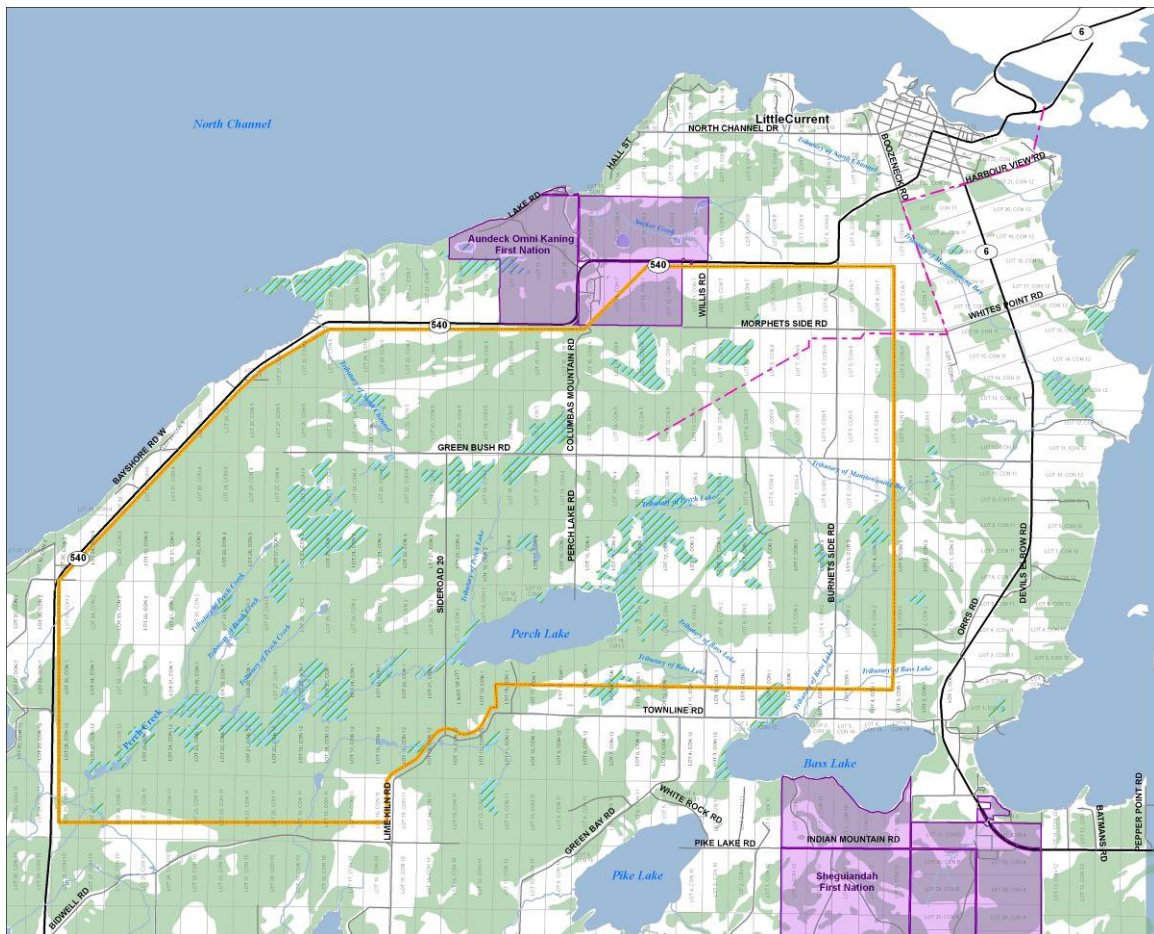
Dillon Consulting Limited is the prime consultant for the preparation of this Project Description Report. The Dillon contact information is as follows:

| | |
|------------------------------|--|
| Full Name of Company: | <u><i>Dillon Consulting Limited</i></u> |
| Address: | <u><i>235 Yorkland Boulevard, Suite 800,</i></u> <u><i>Toronto, Ontario M2J 4Y8</i></u> |
| Telephone: | <u><i>Office: (416)-229-4646 ext 2335</i></u> |
| Prime Contact: | <u><i>Don McKinnon, REA Project Manager</i></u> |
| Email: | <u><i>dpmckinnon@dillon.ca</i></u> |

3. PROPOSED PROJECT LOCATION

The project study area is located entirely in the Municipality of Northeastern Manitoulin and the Islands; geographic Township of Howland and the geographic Township of Bidwell, in the District of Manitoulin and falls within the traditional lands of the Anishnabee of Mnidoo Mnising. The project study area is about 5 kilometers from the Town of Little Current. Within this broader project study area is the project location, where the wind turbines and associated wind farm infrastructure will be located (excluding a portion of the transmission line and the connection yard at the Hydro One grid which is located on the adjacent Goat Island). **Figure 3-1** presents the location of the project area.

Figure 3-1: Project Area



The selection of the project's location was based primarily on the wind resource assessment results, access to the local electrical transmission system, environmental constraints and local landowner support.

4. STAKEHOLDER CONSULTATION

Stakeholder consultation has been a cornerstone of the project with multiple information sharing and stakeholder feedback opportunities provided. The consultation program was initiated in June 2004 and continues with the issuing of the Final Renewable Energy Approval (REA) Application Submission in July, 2011. Further consultations/communications are planned through the proposed construction, operations, and decommissioning phases of the project.

The following sections describe the key consultation activities that were undertaken to date and the proposed activities that are planned for the future. Comments received from Aboriginal communities, agencies, stakeholders, the general public and especially landowners within the project location have significantly influenced the layout of wind turbines and associated infrastructure since the beginning of the environmental assessment process in 2004 and more recently the REA submission.

4.1 Consultation Methodology

Since project initiation, various forms of consultation have taken place. A detailed account of these activities is outlined in the following sections, and includes: public notifications, consultation with government agencies, consultation with key interest groups, meetings with the local municipal council, consultation with Aboriginal communities and organizations, which, for the purposes of this report, include First Nations and Métis communities and organizations, media releases, and the holding of Public Information Centres (PICs).

The objectives of the McLean's Mountain Wind Farm public, agency and Aboriginal consultation process are:

- To undertake consultation early in the planning process and continue throughout the construction, operation and decommissioning phases of the project;
- Identify potentially interested stakeholders and the nature of their interests;
- Inform stakeholders of all relevant information about the project and how the project might affect the physical, natural, social and economic environment in the community; and
- Track and document all communications between stakeholders and the project team to ensure stakeholder interests are incorporated into the planning, design, construction, and operation of the wind farm, wherever possible.

A number of methods have been undertaken to achieve these objectives, including:

- Discussions with local government, provincial agencies and Aboriginal communities and organizations to obtain data and to identify issues associated with the project;

- Notifications and articles published in the local newspaper (*Manitoulin Expositor*);
- Direct mailings to the project contact list;
- Public Information Centres;
- Public Information Centre feedback questionnaires (review of comments and the issuing of responses to them);
- Discussions with local landowners and residents;
- Consultation activities with First Nation communities with the culmination of those consultations leading to a 50/50 ownership partnership of the project;
- The release of the ESR document and REA packages to the public, agencies, and Aboriginal communities for review and comment;
- Contact information for NPI and Dillon; and,
- A project website (www.northlandpower.com).

Recognizing the unique character of the area and the inherent challenges of consulting and engaging such a diverse population, NPI voluntarily undertook additional activities to keep the public informed and engaged. For instance, NPI has regularly written a weekly column in the *Manitoulin Expositor* to keep the public informed on the progress of the project and to inform them generally on various topics relating to wind power. Copies of these articles can be found in **Appendix E**.

4.2 Public Consultation

4.2.1 Contact List

A project contact list was established early on to identify potential stakeholders with a potential interest in the project. The contact list included federal and provincial agencies, elected officials, municipal staff, special interest groups, aboriginal contacts and all landowners within and around the project location. The contact list is provided in **Appendix B**. A map showing the geographical area where landowners received direct mailings is provided in **Appendix B**.

With the introduction of the REA process, consultation continued with all landowners within 120 metres of the project location, as well as any other interested parties that had been previously consulted. As required under O.Reg 359/09 a draft Project Description Report was provided to the MOE for review. NPI requested a list of Aboriginal communities who have or may have constitutionally protected aboriginal or treaty rights that may be adversely affected by the Project, or otherwise have an interest in the project. On April 15, 2010, the MOE provided NPI a list of Aboriginal communities that should be consulted with.

The MOE aboriginal consultation list received in April 2010 identified a couple of additional First Nation communities (on the mainland) that should be notified of the project as well as a couple of Métis organizations with whom had not been previously consulted with. Immediately NPI initiated consultation with those organizations that the MOE recommended.

The project contact list was continually updated throughout the EA and REA processes. Additions to the list occurred primarily as a result of attendance at the Public Information Centres but also through direct communication with the project team members.

4.3 Project Notification

Project notification was provided at various project milestones through formal Notices and letters. Copies of project Notices and letters are included in **Appendix B** of this report.

4.3.1 Project Notification under the Electricity Project Environmental Assessment Regulations (Ontario Regulation 116/01)

Details of project notification under Ontario Regulation 116/01 can be found in the McLean's Mountain Wind Farm Environmental Study Report, Chapter 4 and **Appendix B**.

Notice of Project and Notice of First Public Information Centre (June 2004)

- Newspaper Advertisement (Manitoulin Expositor)

Notice of Second Public Information Centre June 2005

- Newspaper Advertisement (Manitoulin Expositor)

Notice of Commencement of Environmental Screening (August 2005)

- Newspaper Advertisement (Manitoulin Expositor)

Notice of Study Restart and Notice of Third Public Information Centre (June 2009)

- Newspaper Advertisement (Manitoulin Expositor)
- Agency Letter
- Aboriginal Letter
- Municipal Letter
- Landowner Letter (Canada Post Admail)

ESR Notice of Completion – ESR Available for a 30 days review July 2009

- Newspaper Advertisement (Manitoulin Expositor)
- Agency Letter
- Aboriginal Letter
- Municipal Letter
- Landowner Letter (Canada Post Admail)

A written copy of the ESR was made available at the Township of NEMI's Clerk's Office and on the project website: www.northlandpower.ca under the *Project Development* tab. Copies of the final ESR were released to key government agencies (Environment Canada, Ontario Ministry of the Environment and the Ministry of Natural Resources) and Aboriginal Communities for review during the 30-day review period.

4.4 Project Notification under Ontario Regulation 359/09 – Renewable Energy Approval (REA) under the Green Energy Act

Through the previous environmental assessment process from 2004 to 2009, Agencies, the Municipality, landowners, First Nations and stakeholders were all well aware of the project. Under the former EA process, three PIC's were held. As the project was well advanced it was determined that only a PIC #2 (final PIC) under the REA process would be required (following the release of the draft REA Reports) to present the final layout to the public.

Notice of Draft REA Submission Package (January 2010)

An ad was placed in the Manitoulin Expositor on January 13th & 20th 2010 REA Submission package was available for a 60 day review, commencing January 18th, 2010. Drafts of all documents, with the exception of the Consultation Report, were made available on the project website, at the NPI/MMWLP Project Office located in the Town of Little Current and at NEMI's Clerk's office.

In addition to the Notice, a letter dated January 13, 2010, was sent by mail to federal and provincial agencies, NEMI, elected officials, special interest groups, Aboriginal communities and all landowners within 120 metres of project components. All other stakeholder who had formerly been on the ESR mailing list was also advised of the Draft REA submission.

Notice of Final Public Information Centre (February – March 2010)

An ad was placed in the Manitoulin Expositor on February 17th, February 24th & March 10th, 2010 to advertise the Final Public Information Centre that was held on March 22nd, 2010.

In addition to the Notice, a letter dated February 17th, 2010, was sent by mail to federal and provincial agencies, NEMI, elected officials, special interest groups, Aboriginals and all landowners within 120 metres of the project components.

Final REA Submission Application (May 2010)

In May 2010, Final REA Application Submission was submitted to the Director of the Environmental Assessment and Approvals Branch (EAAB) at the Ministry of Environment (MOE).

Based on the input of the MOE, NPI's REA submission relied on the formerly prepared ESR and a concordance table was included, to help demonstrate the fulfillment of the REA requirements. Following a meeting with the MOE in late June 2010, NPI received comments from the MOE in August 2010 and the REA submission was deemed incomplete. This REA submission considers all comments made by the MOE. See **Appendix D** for a list of the comments made by the MOE and NPI's responses to those comments. NPI received comments on the January 2010 REA submission package from the MNR in October 2010. The MNR advised NPI to prepare and submit a full REA documentation package as specified in the REA Regulations. Documentation that relied upon the ESR would not be acceptable.

Additional Final PIC (April – May 2011)

Between November 2010 and May 2011 several changes were made to the project layout to address public concerns. As a result of these layout changes, an additional Final PIC was held on May 18th, 2011 to present the changes to the project and to introduce Mnidoo Mnising Power as project partners.

On April 13th and May 4th, 2011 an ad was placed in the Manitoulin Expositor to advertise the Additional Final PIC. The changes to the project were presented in the ad as were the date, time and location of the upcoming PIC.

In addition to the newspaper ad, letters and the Notice was sent to federal and provincial agencies, NEMI, elected officials, special interest groups, Aboriginals and all landowners within 120 metres of project components.

Notice of Environmental Registry Posting

Within 10 days after the Notice of Proposal for a Renewable Energy Approval for the project is posted in the MOE Environmental Registry, a Notice containing requirements as outlined in Section 15, O.Reg 359/09 will be made available online and published in the Manitoulin Expositor.

A written copy of the REA Submission Package will also be made available at the NEMI Clerk's office as well as at the NPI/MMWLP Project Office located in the Town of Little Current as well as on the project website.

4.5 Meetings with the Public

4.5.1 Public Information Centres under Regulation 116/01

Public Information Centre #1

The first PIC was held on June 30th, 2004 in the Town of Little Current (NEMI Recreation Centre/Arena) to provide the public with general information about the project and NPI's intent to undertake an environmental screening. The Project Location was identified and general information about wind power was presented. Details of the

PIC proceedings as well as comments provided by the public are included in Section 4.6.1 and in *Appendix B of the ESR (July 2009)*.

Public Information Centre #2

The second PIC was held on June 28th, 2005 in the Town of Little Current (NEMI Recreation Centre/Arena) to provide the public with an update on the project. The purpose of the PIC was to: make information about the project available to the public, provide the public with an opportunity to learn more about the EA process and to provide a venue for questions and for providing feedback to NPI about the project. Issues raised by the public at this information centre included: impacts on birds, visibility of the wind turbines, project economic benefits and the effects of the project on tourism. Details of the PIC proceedings as well as comments provided by the public are included in Section 4.6.3 and in *Appendix B of the ESR (July 2009)*.

Public Information Centre #3

The third PIC was held on June 25th, 2009 at the NEMI Recreation Centre/Arena in Little Current, Ontario. During the PIC, several information panels were displayed to provide the public with information about the project. The purpose of the PIC was to: present the results of environmental studies and evaluations of the siting of the wind turbine and transmission line route; the assessment of project impacts on the environment with potential mitigation measures and identification of residual effects; the specific information on the project, and to provide a venue for questions and for providing feedback to NPI about the project. Details of the PIC proceedings as well as comments provided by the public are included in Section 4.6.4 and in *Appendix B of the ESR (July 2009)*.

4.6 Public Information Centre under Renewable Energy Approvals Process

First REA Public Information Centre (PIC#4)

The first PIC under the REA process was held on Monday, March 22, 2010 from 7:00 p.m. to 10:00 p.m. at the Royal Canadian Legion No. 177 in the Town of Little Current. This PIC was a requirement under *Ontario Regulation 359/09 – Renewable Energy Approval (REA) under the Green Energy Act*. The purpose of this PIC was to present the proposed project, including the wind turbine layout, the REA process and to respond to public questions, issues and concerns. This PIC was the final public meeting required under the REA process.

The PIC was organized as a drop-in centre. In total, 118 participants signed in. Overall the PIC was well received. A copy of the completed comment sheets and a copy of a sign-in sheet are included in **Appendix C** of this report.

During the PIC, twenty-three information panels were displayed to provide the public with information about the project (**see Appendix C**).

Representatives from NPI, Trillium Corporate Communications Inc., CG Group, Moving Red Canoe, Aerocoustics Engineering and Dillon Consulting were present at the final PIC to answer questions about the proposed project and to provide additional project information to the public. Among the PIC attendees, there were representatives from the Municipality of The Northeastern Manitoulin and the Islands, First Nations', local business owners, members of non-profit membership association and media. The remainder of the attendants were residents of the area.

The most common concerns expressed at the PIC by residents were:

- Visual impacts;
- Impacts on bodies of water;
- Geology and ground water flow;
- Power line routing;
- Impacts to wildlife, birds and bats;
- Wind turbine setbacks;
- Human and animal health and safety;
- Local Economy (tourism);
- Property Values; and,
- Location of the turbines.

During the PIC, a statement was provided by UCCM¹ (Chief Shining Turtle, Whitefish River First Nation chief and UCCM tribal chair) the UCCM indicated that "A *legal requirement of the Ontario government, as proclaimed by the Supreme Court of Canada, consultation has been ignored and continues to be ignored*" and that "as long as the government of Ontario continues to ignore the First Nations, the chiefs will remain opposed to the project." The statement provided by the UCCM was addressed by NPI's President Mr. John Brace who indicated that NPI would be pleased to work with the Manitoulin Island First Nation to resolve any issues and concerns regarding the proposed project.

A copy of a media release summarizing the opinions of the Aboriginal leaders of Manitoulin First Nation communities and the local residents is provided in **Appendix E**.

Summary of correspondence and communications with the Aboriginal communities, agencies and organizations is provided in *Appendix J of the 2009 ESR* as well as in the Aboriginal Communications Log provided in **Appendix A** of this report. **Section 3.7** below further outlines the consultation process between Aboriginal communities and NPI to summarize the long history of Aboriginal consultation which ultimately concluded in a 50/50 partnership.

Final REA Public Information Centre (PIC#5)

This additional PIC was held on Wednesday, May 18, 2010 from 7:00 p.m. to 9:00 p.m. at the Royal Canadian Legion No. 177 in the Town of Little Current. This PIC was held

¹ United Chiefs and Councils of Manitoulin (UCCM) became United Chiefs and Councils of Mnidoo Mnising (UCCMM) in 2011 with the formation of Mnidoo Mnising Power Company. Both UCCM and UCCMM are referenced in the text depending on the time period under discussion.

to inform stakeholders of the changes that had been made to the project since the last PIC in 2010.

The changes to the project included:

- The use of 100 metre wind turbine towers instead of 80 metre towers;
- A reduction in the number of wind turbines from 43 to 24; and
- The partnership with MMP.

The PIC was organized as a drop-in centre. In total, 89 participants signed in. Overall the PIC was well received. A copy of the completed comment sheets and a copy of a sign-in sheet are included in **Appendix C** of this report.

During the PIC, thirty-seven information panels were displayed to provide the public with information about the project (**see Appendix C**).

Representatives from NPI, Aerocoustics Engineering, White Construction and Dillon Consulting were present at the PIC to answer questions about the proposed project and to provide additional project information to the public. Among the PIC attendees, there were representatives from NEMI, First Nations', local business owners, members of non-profit membership association and media. The remainder of the attendants were residents of the area.

The most common concerns expressed at the PIC by residents were similar to the last PIC:

- Visual impacts;
- Impacts on bodies of water;
- Geology and ground water flow;
- Power line routing;
- Impacts to wildlife, birds and bats;
- Wind turbine setbacks;
- Human and animal health and safety;
- Local Economy (tourism);
- Property Values; and,
- Location of the turbines.

In addition to comments received regarding concerns over the project and the potential impacts there were many positive comments that were received in support of renewable energy and the project. All comments that required responses were followed-up by NPI. Please see **Appendix C** for correspondence.

4.7 Consultation Regarding Hunt Camps

On March 19, 2010 the Director of the EEAB advised NPI that it did not seem likely that a number of proposed hunt camps in the area would be used for overnight accommodation and thus would not be considered as noise receptors as defined in the REA regulation.

After receipt of this letter NPI requested clarification and on March 22, 2010, the Director of the EEAB sent a letter of clarification, stating that “It is not intended that the definition of noise receptor would apply in respect of things like hunt camps (e.g. a building or structure that was used for limited duration in any given month to facilitate hunting or fishing activities)”. Clarification was given on what defined a noise receptor. In this letter the MOE requested that NPI make an effort to consult with the landowners who had taken out building permits on their properties after the layout was released in July 2009.

NPI has made various attempts at contacting the landowners who took out building permits adjacent to turbines #21 and #28 to discuss the nature of the proposed structures. When contacted the landowners with the building permits were not willing to share their plans as to the proposed structure and their facilities so NPI could identify it as a sensitive noise receptor or not. To date these structures have not been constructed and NEMI has continued to extend these permits. Both hunt camp building permits will expire at the end of July, 2011.

4.8 Consultation with Municipality and Local Authorities

The Municipality of Northeastern Manitoulin and the Islands (NEMI) has received notices regarding the proposed project and the PICs that have been held as mentioned above in **Section 3.3**. Letters to Councilors were mailed out on November 30, 2010; copies can be found in **Appendix B**. Below is a summary of the consultation to date with NEMI.

2004 Presentation to NEMI Council

On August 12th, 2004 NPI provided information on the project to the NEMI council (*Appendix B of the ESR, July 2009*). In this presentation to NEMI Council, NPI addressed the following issues regarding the proposed project that were expressed by the community:

- Local economic benefits;
- Visual and noise impacts;
- Impacts on natural environment; and
- Impacts on tourism.

2009 Notice of Project Restart

NPI sent a copy of the June 2009 letter (*Appendix B of the ESR, July 2009*) to the Mayor, Councilors and the Clerk of NEMI advising them of the project restart.

2009 Notice of Completion and Release of Environmental Screening Report (ESR)

In July 2009, a letter of ESR Notice of Completion (*Appendix B of the ESR, July 2009*) had been issued to the NEMI that the environmental screening for the project had been completed. A written copy of the ESR was made available at the NEMI Clerk's Office.

2009 Municipal Consultation Form under REA

In December 2009, in fulfillment of the REA requirements, a letter was sent to NEMI accompanying a submission of the Municipal Consultation Form. A copy of this form is included in **Appendix B** of this report. NPI provided assistance to NEMI officials in completion of the municipal consultation form by developing a municipal consultation form guide. A copy of this guide can be found in **Appendix B** of this report.

On March 8th, 2010 NPI received comments on the Municipal Consultation Form from NEMI. NPI provided a response to these comments on May 5th, 2010. Copies of this correspondence are provided in **Appendix B** of this report.

The Consultation form was signed by NEMI although NEMI did state that not enough information had been provided by NPI to comment on particular aspects of the project as NEMI was sent the municipal consultation form prior to having seen the draft REA reports. In order to resolve this issue NPI provided NEMI with a copy of the draft REA reports. Further consultation with NEMI reflected that most, if not all, of their concerns had been addressed through the draft REA reports. NEMI requested that when available, engineering level information be sent to them for review. NPI has kept the lines of communication with the CAO of NEMI who, along with council is kept up to date as the project advances.

Roads Users Agreement

On April 22, 2010, NPI and NEMI signed a Road Users Agreement, after almost 18 months of negotiations. The approved Road Users Agreement requires that all road allowance plans are reviewed by the NEMI Public Works Manager prior to finalization. NPI has also come to an Agreement with NEMI with respect to the building permit application review fee. NPI will consult with NEMI throughout the design and construction process. Please see Appendix B for the Agreement.

2010 Notice of Final PIC under REA

In December 2009, in fulfillment of the REA requirements, a letter was sent to NEMI providing information about the final PIC. A copy of this notification can be found in **Appendix B** of this report.

2010 Draft Renewable Energy Approval Submission

In January, 2010 NPI had also provided a Draft Renewable Energy Approval (REA) submission package to NEMI that included drafts of the following reports:

- Project Description Report;
- Construction Schedule, supplementary information to the Construction Plan Report in the ESR 2009;
- Community Response Plan and Environmental Management Plan, supplementary information to the Design and Operations Report; and,
- Decommissioning Plan Report.

2010 Letters to Newly Elected NEMI Council

In November, 2010 NPI wrote letters to the NEMI Mayor-elect and newly elected Councilors, introducing them to the McLean's Mountain Wind Farm project and to offer to meet them individually to discuss the project.

2011 Notice of Additional PIC under REA

In April, 2011 a letter was sent to NEMI as an invitation to the additional PIC. A copy of this notification can be found in **Appendix B**.

2011 Notice of Submission of the REA Application

In September 2011 NPI sent a letter to NEMI advising of the Submission of the REA Application to the Director of the EEAB at the MOE. This letter will be issued to NEMI once the Submission of the REA Application is reviewed and deemed complete by the MOE.

4.9 Agency Notification and Consultation

4.9.1 Summary of Federal Agency Consultation

A copy of the June 2009 project restart letter that was sent to federal agencies is contained in *Appendix B of the ESR (July 2009)*. A summary of correspondence/discussions with federal agencies is found in Section 4.4.1, Table 4-1 of *the ESR (July 2009)*. Federal agencies were also sent a notice in July 2009 advising them of the release of the Notice of Completion and this final ESR (*Appendix B of the ESR, July 2009*).

On April 15, 2010 Dillon Consulting sent a letter to Environment Canada (EC) to follow up on previous communications with EC staff, specifically regarding EC's comments made under the previous EA process. A copy of the letter is provided in **Appendix B** of this report.

4.10 Provincial Agencies

Provincial agencies that have been notified of the project under the requirements of the *Canadian Environmental Assessment Act. (Ontario Regulation 116/01)* include:

- Ministry of Natural Resources
- Ontario Provincial Police
 - Northeast Region Headquarters
- Hydro One Inc.
- iSERV Ontario - IT Service Delivery
- Ontario Ministry of Aboriginal Affairs
 - Policy & Relationship Branch
 - Policy and Relationships Branch
 - Negotiations Branch
- Ministry of the Attorney General
- Ministry of Culture
 - Heritage Operations Section, Heritage and Libraries Branch, Ministry of Culture
- Ministry of Energy
 - Renewable Energy Supply
 - Strategic Policy Branch, Conservation & Strategic Policy Division
- Ontario Power Generation
- Ministry of Tourism and Recreation
- Ministry of Municipal Affairs and Housing
- Ministry of Northern Development and Mines
 - Policy Analysis & Development, Corporate Policy Secretariat
- Ministry of the Environment
 - Sudbury Regional Office
- Ministry of Natural Resources
- Ontario Ministry of Aboriginal Affairs
- Ontario Parks

A copy of the June 2009 project restart letter that was sent to provincial agencies is contained in *Appendix B of the ESR (July 2009)*. A summary of the contact/meetings, with provincial agencies is found below in Section 4.4.2 Table 4-2 of *the ESR (July 2009)*. Provincial agencies were notified in July 2009 of the release of the ESR Notice of Completion *Appendix B of the ESR (July 2009)*.

Provincial agencies that have been extensively consulted with on the proposed project under the REA requirements have included the Ontario Ministry of Environment (MOE), the Ministry of Natural Resources (MNR) and the Ontario Ministry of Culture (MTC).

MNR Notice of Draft REA Submission Package

On February 23rd, 2010 a letter accompanied by a copy of the Draft REA Submission Package that included that *Draft Environmental Management and Protection Plan* (a part of the *Design and Operation Plan* under REA) was sent to the Ministry of Natural Resources' (MNR) Office asking for their comments. This submission also included a letter prepared by Dillon Consulting with responses to MNR comments regarding the potential impacts of the McLean's Mountain Wind Farm on endangered or threatened species and their habitats. Multiple follow-up calls were made to the MNR in 2010 regarding their review of the submission package.

MTC Notice of Draft REA Submission Package

On December 23rd, 2009 Dr. Julig of Laurentian University, on behalf of NPI, submitted a letter to the Ministry of Culture and a copy of the McLean's Mountain Wind Farm Stage I Archaeological Report asking for the MTC's review and comments. Subsequently on January 15, 2010 NPI received a clearance letter from the MOC indicating that the MTC concurs with the Archaeological Assessment Stage I Report recommendations.

2010 Notice of Final PIC under REA

In December 2009, in fulfillment of the REA requirements, a letter was sent to the MOE providing information about the final PIC. A copy of this notification can be found in **Appendix B** of this report.

MOE Notice of Draft REA Submission Package

On February 23rd, 2010 a letter accompanied by a copy of the Draft REA Submission Package was sent to the Ministry's Sudbury District Office indicating that the Draft REA Submission Package was released on January 18, 2010 for a 60-day for public review period. A copy of the same package was also provided to the MOE, Environmental Assessment Approvals Branch in Toronto. Copy of notification of this submission can be found in **Appendix B** of this report.

MOE Notice of REA Application Submission

On May 11th 2010 letters accompanying the completed *Application For Approval of a Renewable Energy Project* for the McLean's Mountain Wind Farm project were sent to the Director of the Ministry of the Environment, Environmental Assessments and Approvals Branch on Toronto as well as to the district MOE office.

MNR Comments on REA Submission Package

Conference calls were held with the MNR (Sudbury District) during Fall 2010 including calls on October 1 and December 14, 2010. The purpose of these calls was to discuss the REA submission package that was sent to the MNR in February 2011. As a result of these calls, Dillon and NPI were advised to prepare a full set of the Natural Heritage Reports as required under the REA regulations.

A revised Natural Heritage report package was submitted to the MNR in early April 2011. A meeting/conference call was held with the MNR to discuss the reports on May 2, June 7, and June 20 2011. A site visit was then held with the MNR on June 24. We are currently awaiting MNR sign-off.

MTC Review and Acceptance of Stage 1 and Stage 2 Archaeological Assessments

A Stage 1 Archaeological Assessment was completed and submitted to MTC on December 30, 2009. On January 15, 2010 NPI received a letter of review and acceptance into the provincial register for the assessment.

A Stage 2 Archaeological Assessment was submitted on August 9, 2010. A letter of review and acceptance into the provincial register of reports was received by NPI on August 18th, 2010. Due to changes in the location of project components an addendum was submitted on January 26, 2011. MTC reviewed and accepted the reports into the provincial register on February 1, 2011. Further project layout changes to avoid wetland features required the submission of an additional Stage 2 Archaeological Assessment on June 27, 2011. This report is currently on the expedited review list. Please see **Appendix B** for clearance letters.

MTC Review of Cultural Heritage Screening

MTC comments on an initial cultural heritage assessment that was submitted in September 2010 were received by NPI on March 18, 2011. MTC had requested that in addition to a written summary of the project, that NPI complete a "Check Sheet for Environmental Assessments" or address all of the topics in the checklist. In response to this comment, an updated cultural heritage assessment was prepared and submitted to MTC on April 4, 2011.

2011 Notice of Additional PIC under REA

In April, 2011 a letter was sent to the MOE as an invitation to the additional PIC. A copy of this notification can be found in **Appendix B**.

2011 MOE Notice of REA Application Submission

In September, 2011 letters will accompany the completed *Application For Approval of a Renewable Energy Project* for the McLean's Mountain Wind Farm project will be sent to the Director if the Ministry of the Environment, Environmental Assessments and Approvals Branch on Toronto as well as to the district MOE office.

A summary of notable consultation with provincial agencies under REA as identified above is found below in **Table 3-1**. All correspondence received from the provincial agencies under the REA process is included in **Appendix B** of this report.

2011 MNR Notice of Confirmation of the Natural Heritage Assessment

On September 9, 2011 NPI received a letter from the District Manager, Sudbury to confirm review and acceptance of the Natural Heritage Assessment package submitted on September 1, 2011.

Table 3-1: Summary of Meetings/Contact with Provincial Agencies under REA

| Name | Group/Affiliation | Date of Contact | Topic |
|--------------|---|-------------------|--|
| Eric Cobb | Ontario Ministry of Natural Resources, Sudbury District District Planner | February 23, 2010 | <ul style="list-style-type: none"> Dillon sends a letter with responses to MNR Comments Regarding Potential Impacts of the McLean's Mountain Wind Farm on Endangered or Threatened Species and Their Habitats NPI sends a copy of <i>Northland Power Inc's McLean's Mountain Wind Farm Renewable Energy Approval (REA) Draft Submission Package</i> |
| | | April 4, 2010 | <ul style="list-style-type: none"> MNR provides comments on the <i>Northland Power Inc's McLean's Mountain Wind Farm Renewable Energy Approval (REA) Draft Submission Package</i> document |
| | | May 7, 2010 | <ul style="list-style-type: none"> Dillon sends a letter (via e-mail and courier) in response to preliminary MNR comments which were received from Eric Cobb on the draft REA submission package for Northland Power's Mclean's Mountain Wind Farm, which was submitted to the MNR on February 23, 2010. |
| David Bishop | Ontario Ministry of Natural Resources, Espanola District | April 22, 2010 | <ul style="list-style-type: none"> Dillon sends Work Permit Application – Marine Cable Crossing of Little Current Channel of Lake Huron. |
| Paula Allen | Ontario Ministry of the Environment, Sudbury District Office Environmental Planner, EA Coordinator | February 23, 2010 | <ul style="list-style-type: none"> NPI sends a letter and a copy of <i>Northland Power Inc's McLean's Mountain Wind Farm Renewable Energy Approval (REA) Draft Submission Package</i>. |
| Doris Dumais | Ontario Ministry of the Environment, Environmental Assessment and Approvals Branch Director | January 21, 2010 | <p>NPI sends a Draft Aboriginal Consultation Package that includes:</p> <ul style="list-style-type: none"> First Nations and Métis Consultation Log Dated January 19th, 2010 First Nations and Métis Consultation Materials (Letter Correspondence and E-mail Correspondence) Correspondence with Government Agencies Regarding First Nations and Métis Consultation Additional Information |
| | | March 19, 2010 | <ul style="list-style-type: none"> MOE sends letter regarding Noise Receptors and Vacant Lots (requirements for hunt camps and centre of vacant lot setbacks) |
| | | March 22, 2010 | <ul style="list-style-type: none"> MOE send a letter of clarification regarding Noise Receptors and Vacant Lots. The letter clarifies that the definition of noise receptors |

| Name | Group/Affiliation | Date of Contact | Topic |
|---------------------|---|-------------------------------|---|
| | | | would not apply to hunt camps, which do not have infrastructure such as electricity, potable water supply and sanitary sewage disposal. |
| | | August 3, 2010 | <ul style="list-style-type: none"> MOE sends a letter to clarify NPI questions regarding vacant lot setback distances and well as crystallization dates with respect to wind turbine layout and noise assessment. |
| Sandra Guido | Ontario Ministry of the Environment, Environmental Assessment and Approvals Branch Senior Program Support Coordinator | November 17, 2010 | <ul style="list-style-type: none"> Dillon sends a Project Description Report asking for the Crown to determine which Aboriginal communities should be consulted. |
| | | March 30, 2010 | <ul style="list-style-type: none"> Confirmed receipt of <i>Northland Power Inc's McLean's Mountain Wind Farm Renewable Energy Approval (REA) Draft Submission Package</i> |
| | | April 16 th , 2010 | <ul style="list-style-type: none"> Dillon received an e-mail from Sandra Guido (MOE) with attached letter from Doris Dumais (MOE, EAAB) providing a list of Aboriginal Communities to be consulted for the McLean's Mountain Wind Project |
| Joe de Laronde | Ontario Ministry of the Environment, Aboriginal Affairs Branch | February 19, 2010 | <ul style="list-style-type: none"> Provided comments regarding the <i>Northland Power Inc's McLean's Mountain Wind Farm Project Description Report</i> and permits required by the MNR Requested more information regarding the proposed underwater cable including maps. |
| Paige Campbell | Ontario Ministry of Culture Acting Archaeology Review Officer | December 23, 2009 | <ul style="list-style-type: none"> MTC provided a clearance letter to NPI indicating that the MTC concurs with the Archaeological Assessment Stage I Report recommendations. |
| | Ontario Ministry of Culture Acting Archaeology Review Officer | February 1, 2011 | <ul style="list-style-type: none"> MTC sends a letter of review and acceptance into the provincial register of reports the Stage 2 archeological assessment report addendum for the McLean's Mountain Wind Farm. |
| Yu-Chao (Tom) Hwang | Hydro One Networks Inc. (HONI) - Asset Management, TX Sustainment Investment Planning | March 24, 2010 | <ul style="list-style-type: none"> HONI confirmed that Hydro One Transmission facilities are located within immediate vicinity of the proposed site in the study area. |

| Name | Group/Affiliation | Date of Contact | Topic |
|---|---|--|--|
| Bob Robinson Eric Cobb, Christine Selinger Bruce Richard Jim Beal | Ontario Ministry of Natural Resources (Sudbury Region, Espanola District) | Oct. 1 and Dec. 14, 2010 May 2, June 7 & 20, 2011 | <ul style="list-style-type: none"> Multiple discussions were held with the MNR regarding the Natural Heritage Report package in regards to potential project effects. |

4.11 Aboriginal Consultation

4.11.1 Aboriginal Consultation under the Ontario Regulation 116/01 Process

Given the location of the project, the early involvement of Aboriginal communities and organizations with an interest in the project was identified as a priority.

The following resources were used in developing and implementing NPI's Aboriginal (First Nations and Métis) consultation process:

- Identify Aboriginal communities with an interest or within proximity of the project area;
- Correspondence received from government agencies, including Ministry of the Environment, Indian and Northern Affairs Canada (INAC) - Specific Claims, Assessment and Historical Research Directorate;
- Discussions with Ontario Ministry of Aboriginal Affairs (OMAA);
- Correspondence received from Aboriginal communities and organizations;
- Identified Aboriginal community and Aboriginal organization websites (where available);
- INAC Specific Claims Public Information Summary Reports;
- INAC Canada Comprehensive Claims Information per INAC website;
- Ontario Power Authority "Best Practices, Good Business: Consulting with First Nation and Métis Communities"; OMAA "Draft Guidelines for Ministries on Consultation with Aboriginal Peoples Related to Aboriginal Rights and Treaty Rights"; Government of Canada "Aboriginal Consultation and Accommodation: Interim Guidelines for Federal Officials to Fulfill the Legal Duty to Consult"; and
- Other selected publicly available information (media reports, court records, government agency websites, internet searches, etc.).

At the outset of the project in 2004, NPI identified a list of Aboriginal communities contacted regarding the project. The communities included those primarily located on Manitoulin Island and which were located closest to the project location and included:

- Aundeck Omni Kaning (Sucker Creek);
- Sheguiandah First Nation;

- M'Chigeeng (West Bay) First Nation;
- Whitefish River First Nation;
- Wikwemikong First Nation;
- Zhiibaahaasing First Nation;
- United Chiefs and Councils of Manitoulin;
- Union of Ontario Indians;
- Ontario Natives Women's Association; and
- Métis Nation of Ontario.

In 2009 and the restart of the project, the role of the Crown in consultation with Aboriginal communities became clearer, and NPI initiated a more formal consultation program with broader group of Aboriginal communities, including those on the North Shore and organizations including distribution of regulatory notices and invitations to PICs. Discussions between UCCM and the North Shore First Nation communities resulted in the North Shore First Nation communities stating that the interests in the project were clearly with the First Nation communities on Manitoulin Island. From this point on consultation efforts concentrated on the UCCM and other Island First Nation communities.

In June 2009, INAC advised NPI that the Sagamok Anishnewbek First Nation and the OMAA advised NPI that the Serpent River First Nation as well as the Métis Consultation Unit and Métis Council in Sudbury should be consulted. NPI initiated contact with the aforementioned First Nation communities by sending an introductory letter and the ESR Notice of Completion.

Four First Nations communities expressed interest in meeting with NPI. NPI met with representatives from the four (4) First Nations communities, which include:

- Aundeck Omnikaning First Nation;
- Sheguiandah First Nation;
- Wikwemikong First Nation; and
- M'Chigeeng First Nation.

These meetings provided the opportunity for NPI and the Aboriginal communities to engage in a meaningful way and to discuss the proposed project in general and specific terms, as well as the communities' concerns and interests with regard to the project and the project area, the consultation process, applicable regulatory processes, and other related matters. Details are provided in the *Aboriginal Communications Log* included in **Appendix A** of this report.

Discussions with Specific Aboriginal Communities and Organizations

NPI met with and contacted Aboriginal communities and organizations several times, formally and informally, throughout the course of the project and will continue to do so.

Presented below is a summary of key items discussed with specific communities and organizations to date. Please see **Appendix A** for the Aboriginal Consultation Log.

Aundeck Omnikaning First Nation

Talks with this First Nation began in July 2004 during a meeting to discuss the project. Employment opportunities were raised and a working relationship was developed with the First Nation's construction company for water and snow removal services at the time of core sample drilling. Employment opportunities during the construction phase of the project were also discussed.

Wikwemikong First Nation

NPI met with this First Nation in June 2006 to discuss the project. Potential treaty issues were identified for further discussion and from July to October 2006, NPI made several visits to the Wikwemikong band office to discuss treaty and non-treaty items.

In December 2006 and April 2007, NPI met with the community to discuss the project's progress and concerns about the capacity of the local distribution line.

The relationship continued to build in 2007 when Wikwemikong First Nation invited NPI to attend the First Nations Energy Alliance conference at Casino Rama in February.

M'Chigeeng First Nation

In April 2007, NPI visited this First Nation to discuss the issue of available capacity on the local distribution system and, as a result, NPI and Chief Corbiere visited the Minister of Energy's office to appeal for upgrades to the system.

Sheguiandah First Nation

At a meeting in June 2008, the Sheguiandah First Nation expressed support for the McLean's Mountain Wind Farm and NPI, in agreement with a recommendation of the Chief, is to consider employing young members of the Nation during project construction. It was also agreed that a community forum would be held and the erection of turbines on ceremonial lands was discussed.

4.11.2 REA Aboriginal Consultation

Table 3-2 summarizes the Aboriginal communities NPI has consulted with over the course of the project. NPI did not receive from the MOE the formal list of aboriginal communities to be consulted with until April 2010. This was after NPI release the draft REA documentation package in January 2010. As documented further below, NPI then sent the additional communities identified by the MOE information about the project and a request for consultation.

The Aboriginal communities confirmed by the MOE (letter dated April 15, 2010, **Appendix A**) to be consulted on this project include:

- Aundeck Omni-kaning First Nation;
- Sheguiandaah First Nation;
- M'Chigeeng First Nation;
- Sheshegwaning First Nation;
- Zhiibaahaaasing First Nation;
- Wikemikong First Nation;
- White Fish River First Nation;
- Sagamok Anishnawbek First Nation;
- Serpent River First Nation;
- North Channel Métis Council;
- White Fish Lake First Nation;
- Sudbury Métis Council;
- Métis Council of Ontario; and
- Chiefs of Ontario.

Most of the REA consultation activities with First Nation communities were through the United Chiefs and Councils of Manitoulin (UCCM). NPI first met with the UCCM previous to the commencement of the REA process. At this meeting the UCCM indicated that they would only engage with the crown with respect to the proposal. UCCM indicated they felt they had not adequately been consulted through the EA process.

For a complete history of the consultation and eventual partnership with UCCM/UCCMM please see **Section 3.12.3**.

NPI is committed to the continuation of discussions and consultation with Aboriginal communities that have asserted an interest in the project and project area. These consultations will include, but are not limited to:

- Continuing to meet and engage with the Aboriginal communities to better understand their interests in the area, to address any material concerns and to keep them apprised of the Project's development;
- Assessing need, and where appropriate providing capacity funding, for Aboriginal communities to effectively participate in the consultation process;
- Continuing attempts to determine potentially affected traditional land use and archaeological interests in the project area. Where necessary, NPI will formulate appropriate mitigation, approval and operation plans with affected Aboriginal communities; and,
- Identifying employment and contracting opportunities for Aboriginal communities.

Table 3-2: Consultation Summary with Aboriginal Communities and Organizations

| | 2004 Consultation <i>(based on First Nations within 100 km)</i> | 2009 Project Re-Start Consultation <i>(based on previous and letter from INAC/OMAA)</i> | 2010-Present Consultation <i>(based on MOE recommendation letter)</i> |
|--|---|---|---|
| Aundeck Omni-kaning First Nation (UCCMM) | ✓ | ✓ | ✓ |
| Sheguiandah First Nation (UCCMM) | ✓ | ✓ | ✓ |
| M'Chigeeng First Nation (UCCMM) | ✓ | ✓ | ✓ |
| Sheshegwaning First Nation (UCCMM) | | | ✓ |
| Whitefish River First Nation (UCCMM) | ✓ | ✓ | ✓ |
| Zhiibaahaasing First Nation (UCCMM) | ✓ | ✓ | ✓ |
| UCCM/UCCMM | ✓ | ✓ | ✓ |
| Sagamok Anishnawbek First Nation | | ✓ | ✓ |
| Serpent River First Nation | | ✓ | ✓ |
| Wikwemikong First Nation | ✓ | ✓ | ✓ |
| White Fish Lake First Nation | | | ✓ |
| North Channel Métis Council | | | ✓ |
| Sudbury Métis Council | | ✓ | ✓ |
| Métis Nation of Ontario | ✓ | ✓ | ✓ |
| Chiefs of Ontario | | | ✓ |
| Union of Ontario Indians | ✓ | ✓ | |
| Ontario Natives Women's Association | | ✓ | ✓ |

The following provides further details regarding the notifications and consultations conducted with Aboriginal communities as part of the REA process.

Release of Project Description Report – REA Phase

In fulfillment of the newly established REA requirements, on December 1st, 2009, NPI sent a letter and Project Description Report to the following Aboriginal communities and organizations requesting information that should be considered in the planning of the proposed project, in particular, any information that the identified Aboriginal communities and organizations may have had regarding potential adverse impacts of the project on constitutionally protected aboriginal or treaty rights and recommendations for measures to mitigate these adverse impacts. The list was shortened, as explained earlier, due to discussions between First Nations whereby the First Nations of the North Shore decided that the interest should be with the First Nations, on the island, whose traditional lands were affected by the project. A copy of this letter is provided in **Appendix A** of this report.

- Aundeck Omni Kaning (AOK)
- Sheguiandah First Nation;
- Whitefish River First Nation;
- M'Chigeeng (West Bay) First Nation;
- Wikwemikong First Nation;
- United Chiefs and Councils of Manitoulin; and
- Métis Nation of Ontario.

Draft REA Distribution

As of January 18, 2010, no Aboriginal communities and organizations had provided feedback to NPI as a result of the December 1, 2009 letter. In continued fulfillment of the REA requirements, on January 18th, 2010 NPI sent written copies of the Draft REA Submission Package along with letters to the above noted Aboriginal communities and organizations informing them NPI had not received any responses from Aboriginal communities and organizations to the December 1, 2009 letter and that a Draft REA Submission Package was available for a 60-day review period as of January 18, 2010. A copy of this letter is provided in **Appendix A** of this report.

Notice of Final PIC

On February 17, 2010, NPI issued letters with a notice of the final Public Information Centre planned under the REA process and scheduled for Monday, March 22, 2010. This letter also reminded recipients that the 60-day review period of the Draft REA Submission Package was ongoing and would conclude on March 18, 2010. A copy of this letter is included in **Appendix A** of this report and was sent to the above noted Aboriginal communities and organizations:

Further Identification of Additional Aboriginal Communities and Organizations

Subsequent to this distribution, on April 15, 2010, the Director of the MOE's EEAB Branch responded to an NPI request for a list of Aboriginal communities to be consulted under the REA. A majority of the Aboriginal communities and organizations identified by the MOE were already on the project mailing list and had been contacted at various times throughout the project. The new Aboriginal communities and organizations were the North Channel Métis Council and the Whitefish Lake First Nation. The letter also reconfirmed the need to consult some Aboriginal communities and organizations that had last been corresponded with in July 2009.

As a result, on May 11, 2010, NPI sent letters to the additional Aboriginal communities and organizations seeking their potential interest in the project and followed up with phone calls to these groups. NPI then sent hard copies of the Draft PDR to these additional contacts on July 24, 2010, ensuring that all Aboriginal communities and organizations received the PDR. The additional Aboriginal communities and organizations were as follows:

- Sheshegwaning First Nation;
- Zhiibaahaasing First Nation;
- Whitefish Lake First Nation;
- Sagamok Anishnawbek First Nation;
- Serpent River First Nation;
- North Channel Métis Council;
- Sudbury Métis Council;
- Chiefs of Ontario; and,
- Union of Ontario Indians.

Copies of these letters are provided in **Appendix A** of this report.

The MOE also identified the Ontario Native Women's Association as an organization that should be consulted with. They were provided with this information as part of the July 24, 2010 mailing to Aboriginal communities and organizations.

4.11.3 The Forming of the NPI/Mnidoon Mnising Power Corporation Partnership

Initial contact was made with UCCM in June 4th, 2009 at a meeting in Sheguiandah with the Chiefs of the United Chiefs and Councils of Manitoulin (UCCM), to later become United Chiefs and Councils of Mnidoon Mnising (UCCMM). Membership of UCCM include M'Chigeeng First Nation; Sheguiandah First Nation; Sheshegwaning First Nation; Aundeck-Omni-Kaning First Nation; Whitefish River First Nation; and Zhiibaahaasing First Nation.

The Chiefs of the UCCM initially laid out clearly that they were not interested in engaging with developers but only with government, in Nation to Nation discussions on any future development issues as to their treaty rights on Manitoulin Island.

After this 2009 meeting representatives of NPI attended the “Our Relations” conference held February 9-10, 2010 on Birch Island. This conference had a high level of showing from government agencies and industry. Following the conference a UCCM meeting was held and the UCCM Chiefs decided to stand together as a group to support renewable energy on Manitoulin Island.

On July 8, 2010 UCCM Chiefs met to discuss renewable energy on Manitoulin Island and decided to explore alternative approaches towards renewable energy projects. On July 14, 2010 UCCM met with NPI to propose a partnership. On July 22, 2010 UCCM and NPI met again to further discuss the partnership and agreed to move forward by the means of a Letter of Intent. NPI and UCCM agreed to partner on a 50/50 basis for this project and for future projects on UCCM traditional land.

Partnership negotiations began in September 2010. On October 4th, 2010 a ceremony was held by UCCM and NPI on the land led by UCCM elders. After three months of negotiations on December 2, 2010, the United Chiefs and Councils of Mnidoo Mnising (UCCMM) launched Mnidoo Mnising Power Corporation, the vehicle to drive renewable energy projects on Mnidoo Mnising (Manitoulin Island) and ensure viable clean energy alternatives for First Nation communities and positive future for First Nation youth. With the incorporation of Mnidoo Mnising Power, UCCM, became United Chiefs and Councils of Mnidoo Mnising, UCCMM.

On December 10, 2011 partnership negotiations concluded and resulted in the following agreements signed between UCCMM and Northland:

- Limited Partnership Agreement;
- Shareholders Agreement;
- Memorandum of Understanding;
- Mnidoo Mnising Limited Partnership Management Agreement; and
- Northland Management Agreement.

Since the partnership NPI has assisted UCCMM in securing financing for their participation. NPI has also assisted the M’Chigeeng First Nation through municipal meetings, the grand opening of the project and with land option negotiations. NPI has also taught week-long introduction to renewable energy courses in M’Chigeeng and Garden River First Nation communities.

One of the conditions of the partnership, requested by UCCMM, was that NPI not construct 4 turbines in the northern portion of the study area. NPI agreed and the partnership became official on October 4, 2010. A team was formed on February 24,

2011 to scope out long term plans for future development on Mnidoo Mnising (Manitoulin Island) and surrounding Traditional Lands of the UCCMM Nations).

Since the formation of the partnership NPI and UCCMM have undertaken many consultation and public relations events. NPI and UCCMM had a meeting at Queen's Park to discuss actions going forward with the Ministers and their officials. Both parties have participated in youth workshops events and the First Nation long-term Lifetime Achievement Awards ceremonies in North Bay, the attendance at the Ontario Power Authority's Long-Term Energy Plan meetings. NPI has been diligent in learning more about the local Anishnabee through the study of their treaties, local history and frequent interaction in planning as the project develops.

On February 10, 2011, a public news announcement was made to publicize the new partnership.

Notice of Additional Final PIC

On April 20, 2011, NPI issued letters with a notice of the additional final Public Information Centre planned under the REA process and scheduled for Wednesday May 18, 2011. A copy of this letter is included in **Appendix A** of this report and was sent to:

Aboriginal Project Partners

- United Chiefs and Councils of Mnidoo Mnising (Formerly United Chiefs and Councils of Manitoulin), including:
 - Sheshegwaning First Nation;
 - Whitefish River First Nation;
 - Zhiibaahaasing First Nation;
 - Aundeck Omni Kaning First Nation;
 - M'Chigeeng First Nation; and
 - Sheguiandah First Nation.

Aboriginal Non-Partners

- Chiefs of Ontario;
- North Channel Metis Council;
- Ontario Native Women's Association;
- Sagamok Anisknawbek First Nation;
- Serpent River First Nation;
- Sudbury Metis Couil Union of Ontario Indians;
- Whitefish Lake First Nation;
- Métis Nation of Ontario; and
- Wikwemikong First Nation.

Once the Final REA Application Submission is accepted by the MOE, NPI will send letters to the above identified Aboriginal communities and organizations informing them that a REA Application Submission is available for a 30-day review period on the MOE website and the project website. In September 2011 all Aboriginal communities listed above were sent summaries of the Final REA and Natural Heritage Assessment reports.

4.12 Communication Tower Consultation

As per Radio Advisory Board of Canada (RABC) Communication Tower Consultation Guidelines (2007) and as part of the *Canadian Environmental Assessment Act. (Ontario Regulation 116/01)*, the following agencies were sent a letter in June 2009 providing information on the proposed project and a request for any concerns or issues in regards to the project:

- Radio Advisory Board of Canada (RABC);
- Transport Canada- Aerodromes and Air Navigation Unit;
- Royal Canadian Mounted Police – RCMP Communication Towers;
- Department of National Defence – National Defence Communication Towers;
- Environment Canada – Weather Radars;
- NAV Canada – Civilian ATC Radars;
- Department of National Defence – Military Air Defence and ATC Radars;
- Canadian Coast Guard – Vessel Traffic System Radars;
- Natural Resources Canada – Seismological Monitoring Arrays; and
- Government Mobile Communications Office.

A copy of the letter that was sent to agencies is contained in *Appendix B of the ESR (July 2009)*.

A summary of the responses received to date from communications agencies is found in Section 4.5, Table 4-3 of the *Appendix B of the ESR (July 2009)*.

5. RELEASE OF DRAFT AND FINAL REA DOCUMENTS

The following documents were provided in draft form starting on January 18, 2010 for a 60-day public review period:

- Draft Project Description Report;
- Draft Construction Plan Report;
- Draft Design and Operations Plan Report;
- Draft Decommissioning Report;
- Draft Wind Turbine Specifications Report;
- Draft Natural Heritage Assessment Report;
- Draft Water Report;
- Draft Heritage Resource Assessment Report;
- Draft Stage 1 and 2 Archaeological Assessment Reports.

The documents were made available on the project website and in hard copy at the NPI Project Office located in Little Current as well as at NEMI municipal offices. Comments from the MOE, NEMI, landowners and Aboriginal communities have all been incorporated into the final REA submission package.

The project layout has changed considerably based on the comments provided to NPI. Before UCCMM would establish a partnership with NPI they requested that turbines # 1, 2, 3 and 7 be removed from the project. NPI honoured this request and removed those turbines from the layout.

With respect to comments received from stakeholders and landowners NPI made some key adjustments to the project layout to satisfy the requests of the public. There were several individuals that were concerned about the wind farms effects on tourism, especially the change in viewscape from Honora Bay. Based on feedback received from the Final Public Information Centre several of the northernmost wind turbines and the southwestern perimeter wind turbines were removed from the project.

A landowner wrote NPI very concerned about the location of turbine #1 in relation to his residence. NPI, in consultation with UCCMM and this landowner, completely removed this turbine from the project.

The above are just a few documented examples of the open dialogue and consultation NPI has engaged in over the course of the REA process. All 34 letters that NPI received after the Final Public Information Centre, along with their responses can be found in **Appendix B: Notices and Letters**.

The MOE compiled a list of comments that NPI would have to address in order to fulfill Section 13 of O.Reg 359/09. A list of all the MOE comments, their responses and

references to the REA submission document and section number can be found in **Appendix D**.

6. DOCUMENTATION

Documentation of consultation activities throughout the project is provided in the following documents prepared for the proposed project:

- *Northland Power Inc's McLean's Mountain Wind Farm Environmental Screening Report/Environmental Impact Statement (ESR/EIS), July 2009;*
- *Northland Power Inc's McLean's Mountain Wind Farm Renewable Energy Approval (REA) Draft Submission Package ; and the*
- *Northland Power Inc's McLean's Mountain Wind Farm Final Renewable Energy Approval (REA) Application Submission.*

Comments provided by various stakeholders and responses to these comments are recorded in the following documents:

The McLean's Mountain Wind Farm ESR/EIS July, 2009 Comment/Response Table

The McLean's Mountain Wind Farm ESR/EIS (July, 2009) Comment/Response Table included in **Appendix G** of this report documents all of the comments received during the Environmental Assessment process as well it provides responses generated to address these comments.

The McLean's Mountain Wind Farm Comment Response Table received under REA, May 2010

The McLean's Mountain Wind Farm Comment Response Table received under REA (May 2010) included in **Appendix G** of this report documents all of the comments received during the REA process as well it provides responses generated to address these comments.

Individual Responses under REA

Following the submission of the REA Application to the MOE, NPI will provide individual responses to the comments provided via e-mail or mail by the public regarding the proposed project.

All correspondence received from the public under the REA process is included in **Appendix D** of this report.

7. FUTURE CONSULTATION COMMITMENTS

The project owners will continue its stakeholder consultation and communications through project construction and implementation phases. The project owners will provide information releases to the community if new issues arise or if the community has specific concerns. Company representative contact information will be available to the public to address concerns and questions during operations. Planned stakeholder consultation and communications activities will include:

- Web site with updates on project progress;
- The appointment of a construction community liaison officer who shall directly address issues raised by the community during the construction phase of the project;
- Project update bulletin or bulletins as required, mailed or hand delivered to keep area residents apprised of the progress of construction, dates and timing of any traffic disruptions connected with the project and any other matters that may affect or be of interest to area residents and other project stakeholders;
- Newspaper notices regarding traffic disruptions and construction timings of interest;
- Personal consultations as requested or if warranted;
- Meetings with municipal and other local and provincial government authorities;
- Ongoing consultation and meetings with local Aboriginal communities and organizations; and,
- Post-construction: public gathering to present post-construction study results.

MMWLP has also developed a Community Response Plan that will engage and inform the public, Aboriginal communities and the Municipality of project activities in the following manner:

- Project update bulletins will be posted at the Project Office and distributed to the local Aboriginal communities' offices as well as to the Municipal Town Office.
- A McLean's Mountain Wind Farm Project Office was established. The office is located in the Town of Little Current. The project office will serve as central point of information regarding the proposed project. The project office's address is: Northland Power Inc/McLean's Mountain Wind Limited Partnership Little Current Office, McLean's Mountain Wind Farm Office 13 Worthington Street South Side Office, Little Current ON, P0P 1K0.

- All correspondence regarding the proposed project will be directed to the main project contact – the Project Manager who will be available via the project office and may be contacted as follows:

Rick Martin
Senior Manager, Business Development, Renewable Energy
Project Manager,
McLean's Mountain Wind Farm
Northland Power Inc. /McLean's Mountain Wind Limited Partnership
(705) 271-5358 cell
(705) 368-0303 Manitoulin Island Office
rickmartin@northlandpower.ca