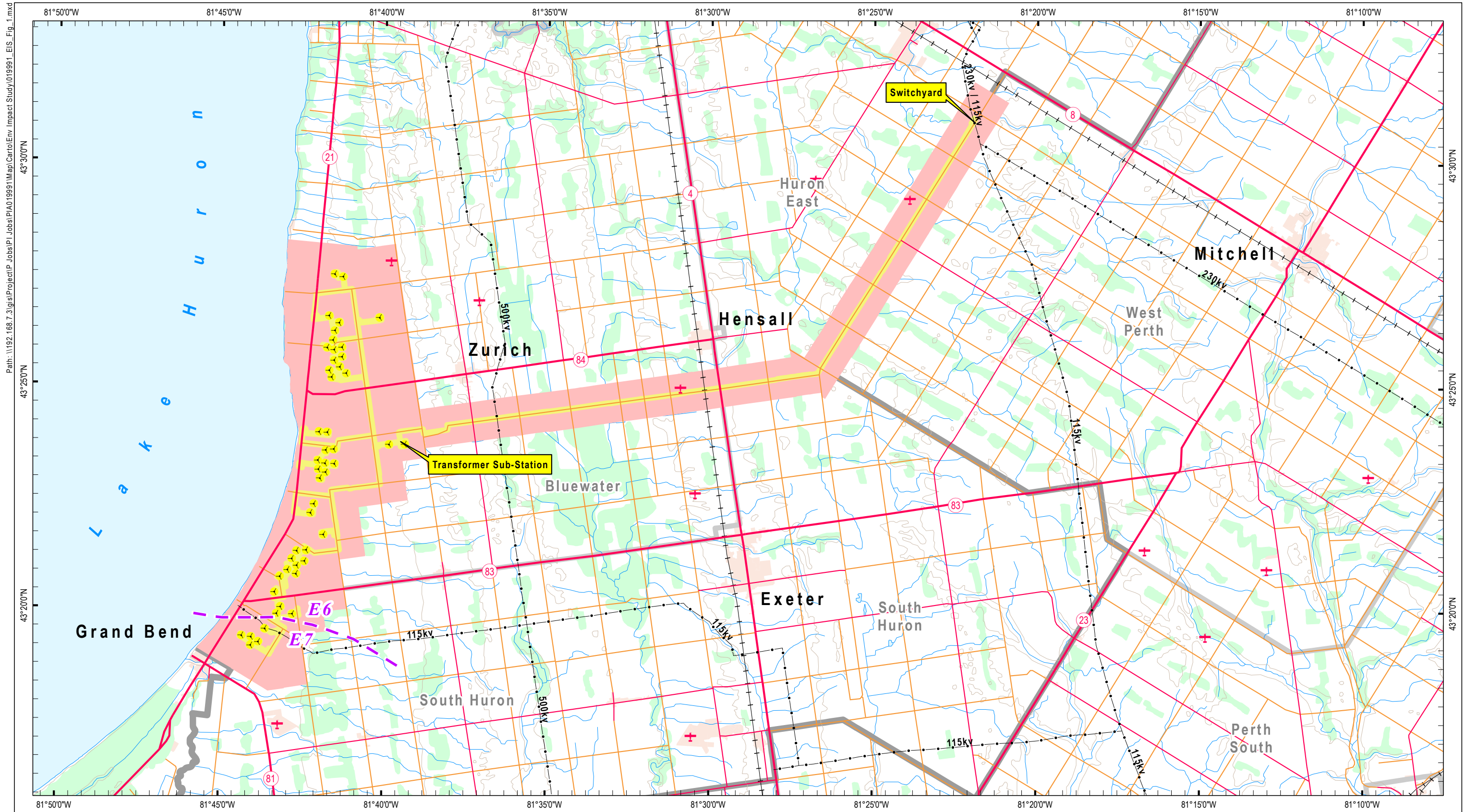
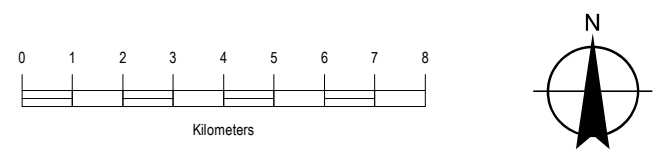


---

**Appendix A**  
**Figures**



Path: \\1192.168.7.3\gis\Project\PIA019991\Map\Carto\Env\_Impact\_Study\019991\_EIS\_Fig\_1.mxd  
Date: 21 November 2012

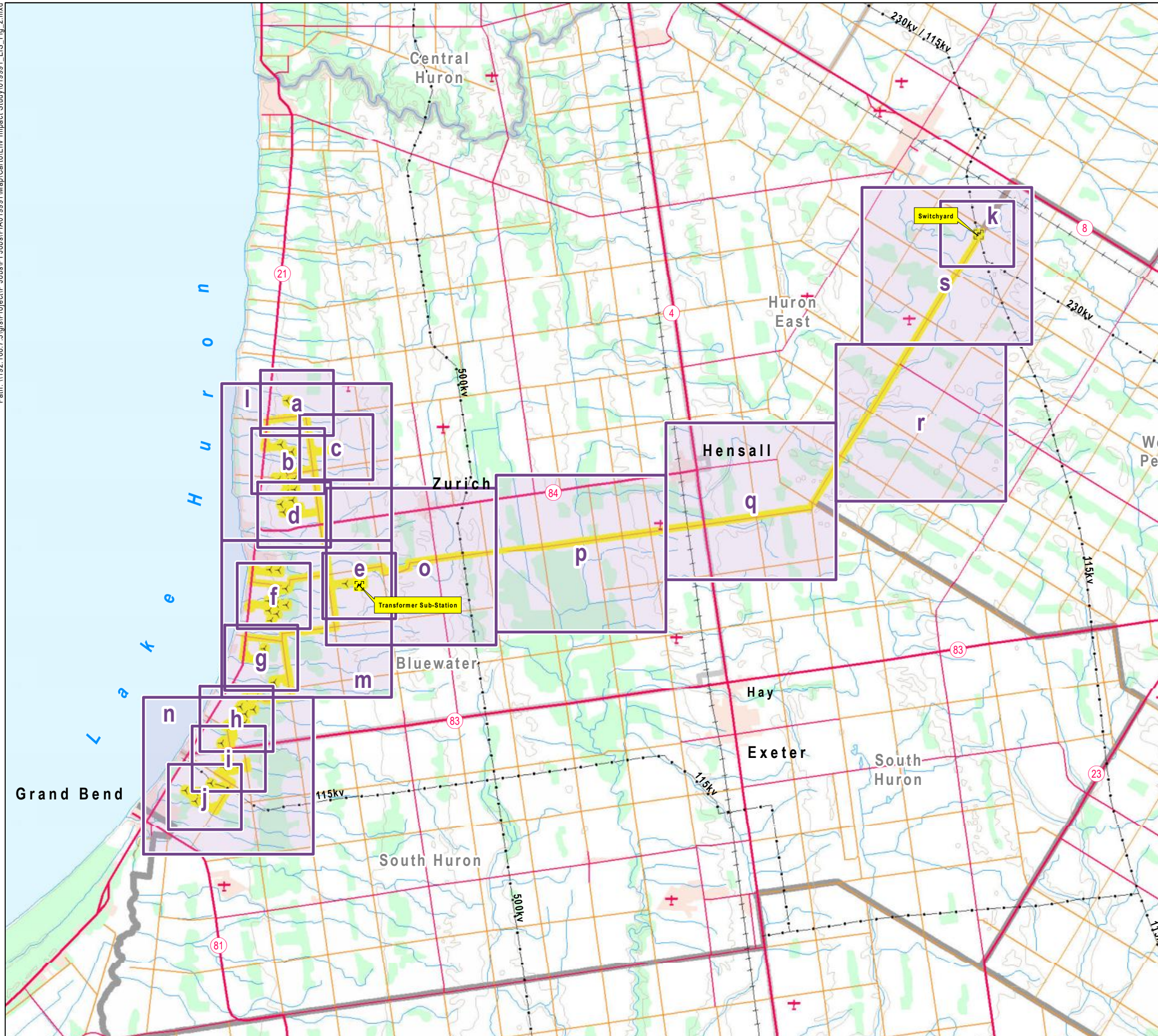





- Wind Turbine Location
- 120m From Project Location
- Study Area
- Ecoregion 6E - 7E Division



Note: All infrastructure shown on the map represents proposed locations.

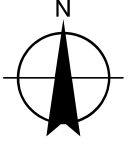
Title			
Grand Bend Wind Farm Grand Bend Wind Limited Partnership Environmental Impact Study Site Location			
Prepared	P. Stubbert	Checked	T. Radburn
Scale	1:150,000	Project	PIA019991
			Map Number <b>1</b>



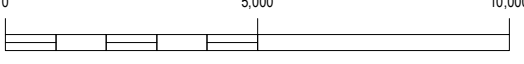
-  Turbine Location: Northland Power Grand Bend Project
-  Transformer Sub-Station | Switch Yard
-  Project Area

DATA SOURCES:  
 1. Ministry of Natural Resources, © Queen's Printer for Ontario  
 2. Natural Resources Canada © Her Majesty the Queen in Right of Canada

21 November 2012

N  


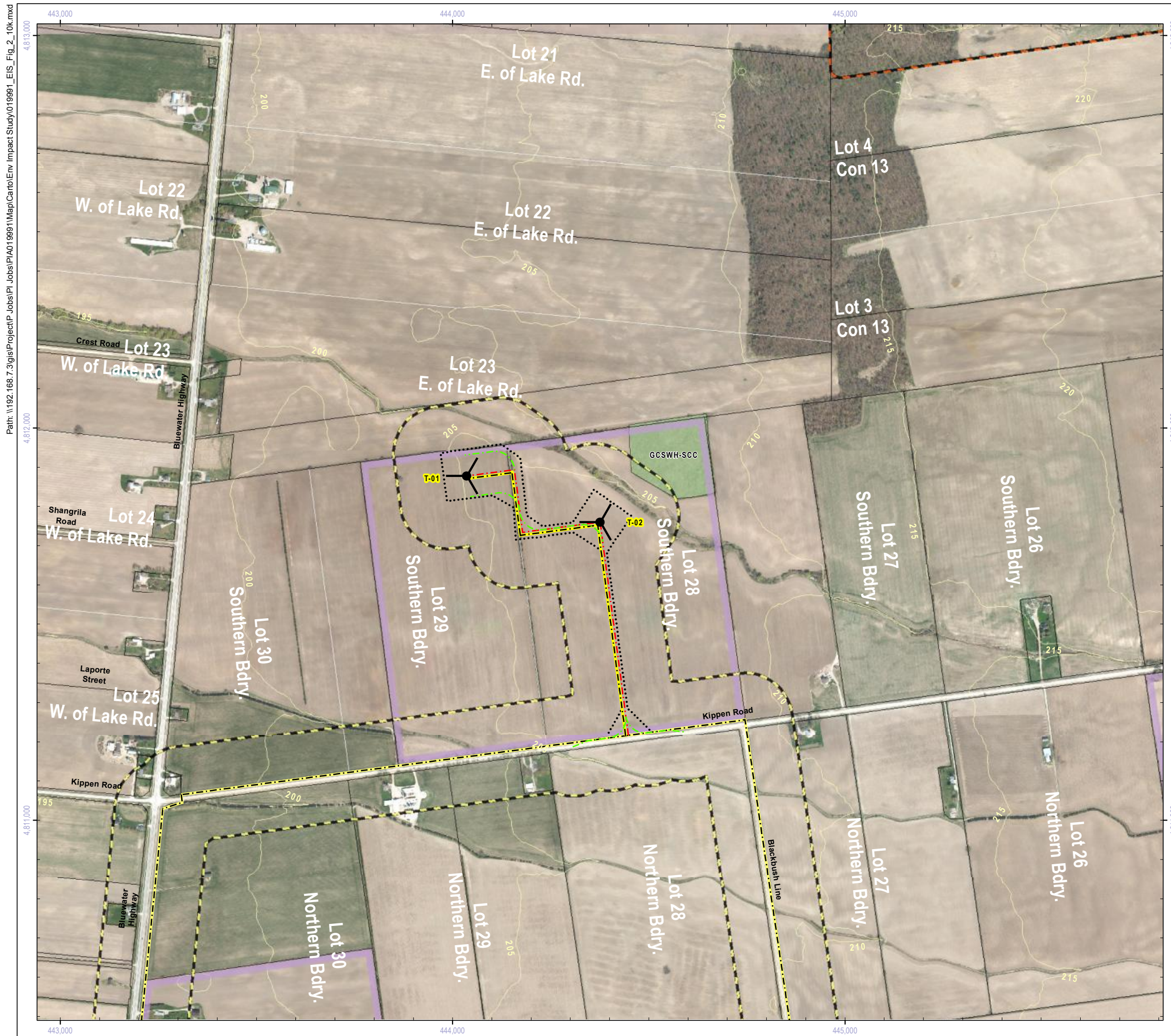
Projection: UTM Zone 17  
Datum: NAD 83

0                      5,000                      10,000  
  
 Meters



Title  
 Grand Bend Wind Farm  
 Grand Bend Wind Limited Partnership  
 Environmental Impact Study  
 Generalized Candidate SWH

Prepared	P. Stubbert	Checked	T. Radburn	Figure Number	<b>2</b>
Scale	1:150,000	Project	PIA019991		



**Project Infrastructure**

	Wind Turbine Location		Participating Property
	Access Road & Collector Line		Access Road
	Access Road: For Construction (Temporary)		Collector Line
	Transmission Line		Existing Transmission Line: Overhead
	Area of Construction		Building / Transformer Sub-Station / Switching Yard
			Contour (5m Interval)

**ELC Classes**

	Agriculture		120m From Project Location
	Forest		Study Area
	Open Water		Ecoregion 6E - 7E Division
	Cultural		
	Wetland: Marsh		
	Wetland: Swamp		

**NOTES:**

- Reference the Figure 1 Key Map for location in the overall project area.

**DATA SOURCES:**

- County of Huron (including Imagery: 2010)
- Ministry of Natural Resources, © Queen's Printer for Ontario
- Natural Resources Canada © Her Majesty the Queen in Right of Canada

21 November 2012

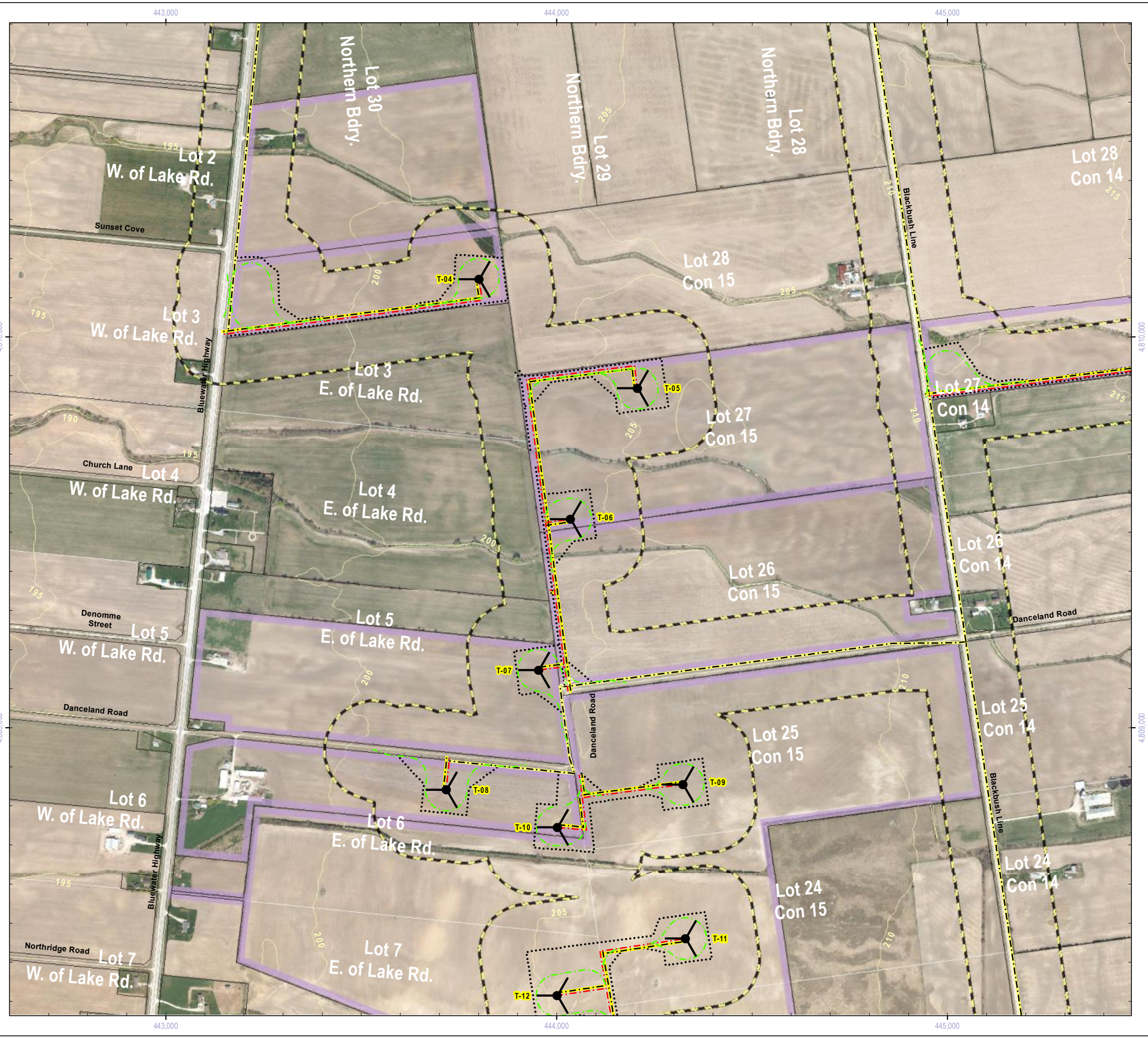
Projection: UTM Zone 17  
Datum: NAD 83

0 100 200 300 400 500 600 700 800  
Meters

**NEEGAN BURNSIDE**

Title  
Grand Bend Wind Farm  
Grand Bend Wind Limited Partnership  
Environmental Impact Study  
Generalized Candidate SWH

Prepared	P. Stubbert	Checked	T. Radburn	Figure Number	2a
Scale	1:10,000	Project	PIA019991		



### Project Infrastructure

	Wind Turbine Location		Participating Property
	Access Road & Collector Line		Access Road
	Access Road: For Construction (Temporary)		Collector Line
	Transmission Line		Existing Transmission Line: Overhead
	Area of Construction		Building / Transformer Sub-Station / Switching Yard
			Contour (5m Interval)

### ELC Classes

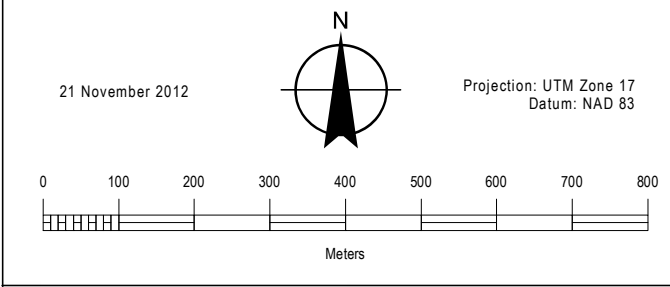
	Agriculture		120m From Project Location
	Forest		Study Area
	Open Water		Ecoregion 6E - 7E Division
	Cultural		
	Wetland: Marsh		
	Wetland: Swamp		

**NOTES:**

- Reference the Figure 1 Key Map for location in the overall project area.

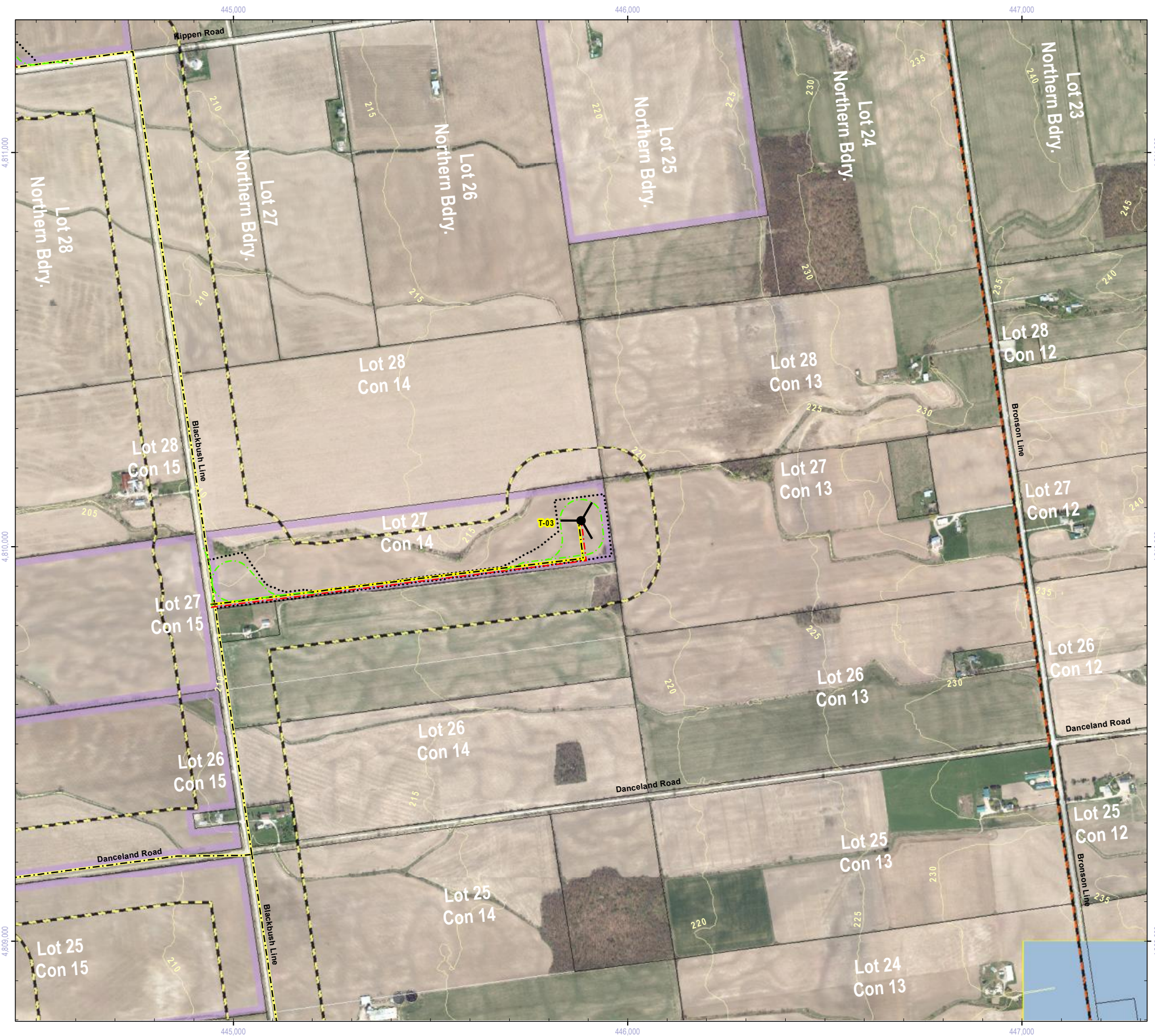
**DATA SOURCES:**

- County of Huron (including Imagery: 2010)
- Ministry of Natural Resources, © Queen's Printer for Ontario
- Natural Resources Canada © Her Majesty the Queen in Right of Canada



Title  
**Grand Bend Wind Farm  
 Grand Bend Wind Limited Partnership  
 Environmental Impact Study  
 Generalized Candidate SWH**

Prepared	P. Stubbert	Checked	T. Radburn	Figure Number	2b
Scale	1:10,000	Project	PIA019991		



### Project Infrastructure

	Wind Turbine Location		Participating Property
	Access Road & Collector Line		Access Road
	Access Road: For Construction (Temporary)		Collector Line
	Transmission Line		Existing Transmission Line: Overhead
	Area of Construction		Building / Transformer Sub-Station / Switching Yard
			Contour (5m Interval)

### ELC Classes

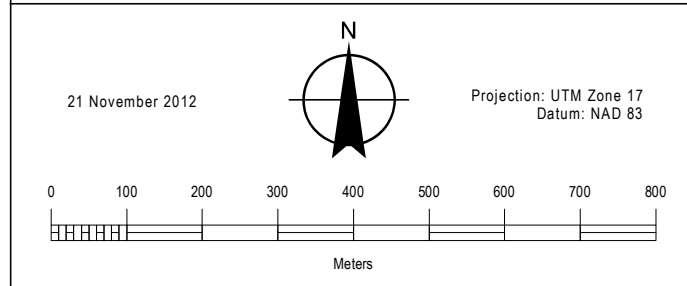
	Agriculture		120m From Project Location
	Forest		Study Area
	Open Water		Ecoregion 6E - 7E Division
	Cultural		
	Wetland: Marsh		
	Wetland: Swamp		

**NOTES:**

- Reference the Figure 1 Key Map for location in the overall project area.

**DATA SOURCES:**

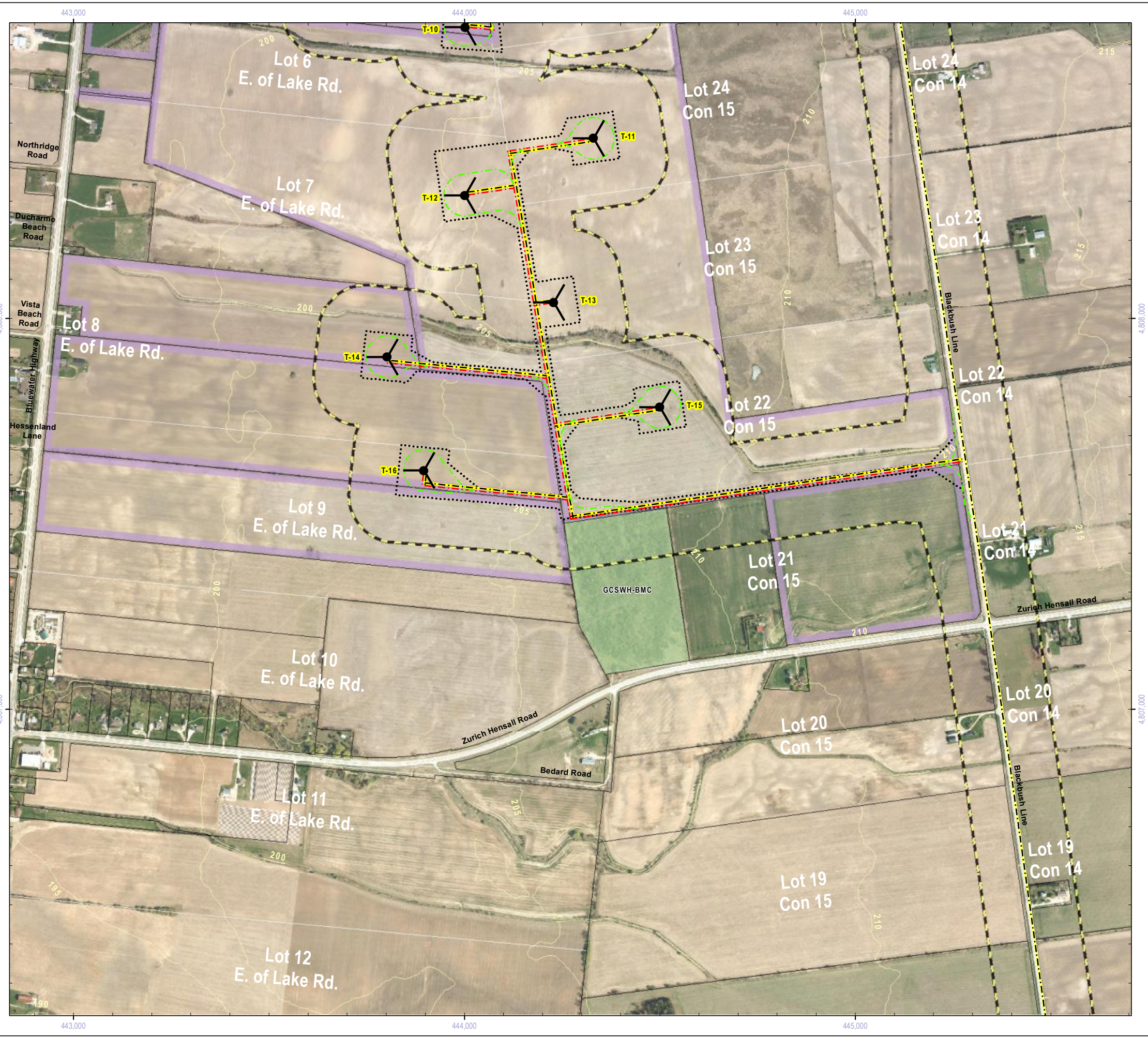
- County of Huron (including Imagery: 2010)
- Ministry of Natural Resources, © Queen's Printer for Ontario
- Natural Resources Canada © Her Majesty the Queen in Right of Canada



Title

**Grand Bend Wind Farm  
Grand Bend Wind Limited Partnership  
Environmental Impact Study  
Generalized Candidate SWH**

Prepared	P. Stubbert	Checked	T. Radburn	Figure Number	2c
Scale	1:10,000	Project	PIA019991		



### Project Infrastructure

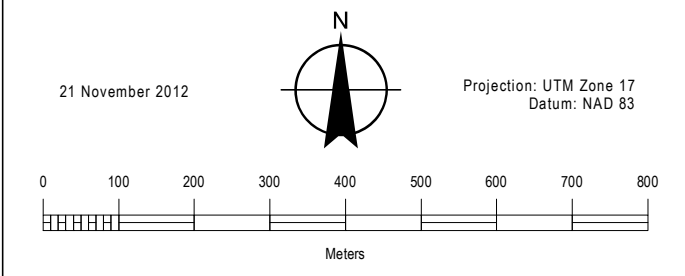
	Wind Turbine Location		Participating Property
	Access Road & Collector Line		Access Road
	Access Road: For Construction (Temporary)		Collector Line
	Transmission Line		Existing Transmission Line: Overhead
	Area of Construction		Building / Transformer Sub-Station / Switching Yard
			Contour (5m Interval)

### ELC Classes

	Agriculture		120m From Project Location
	Forest		Study Area
	Open Water		Ecoregion 6E - 7E Division
	Cultural		
	Wetland: Marsh		
	Wetland: Swamp		

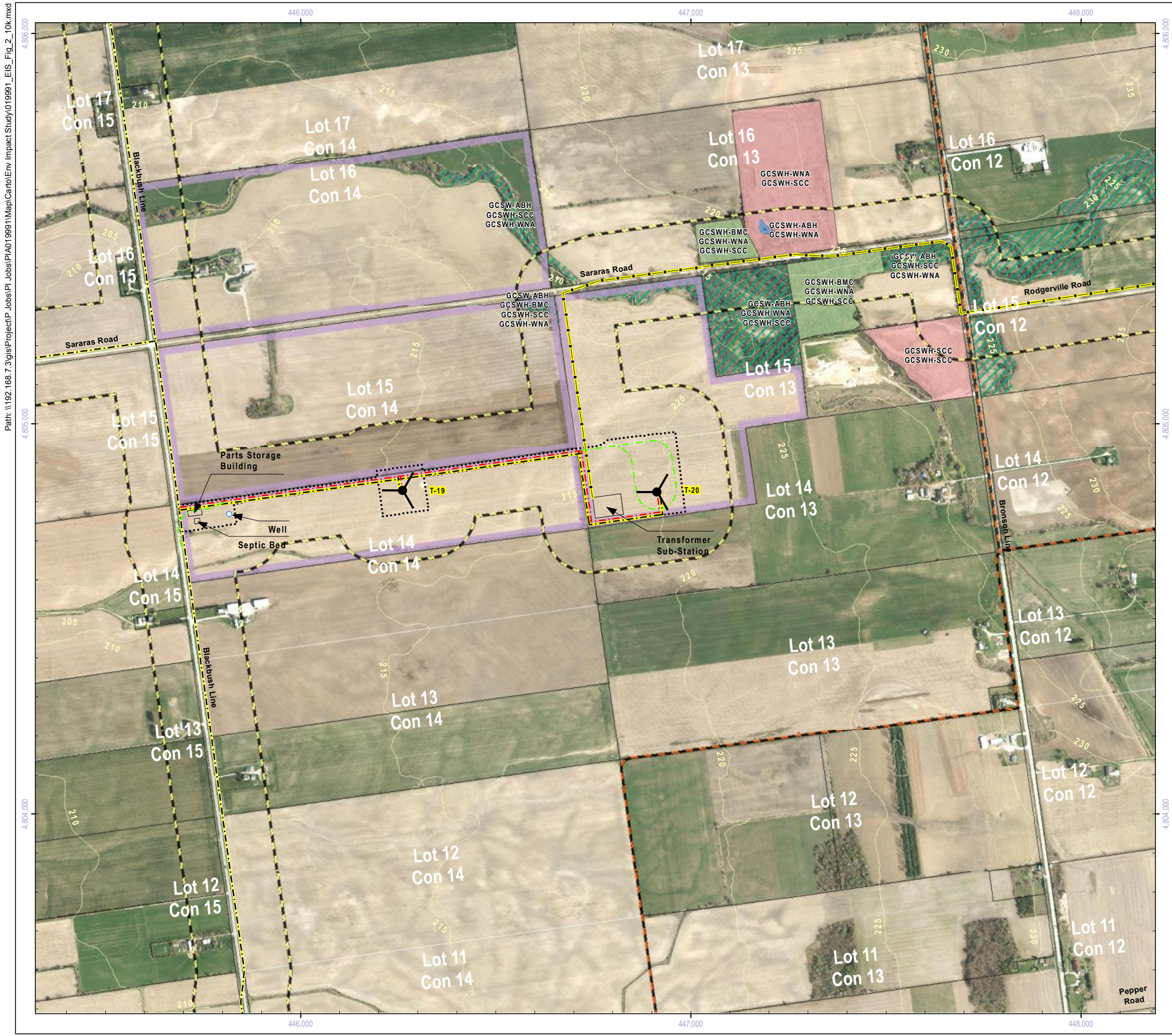
**NOTES:**  
 1. Reference the Figure 1 Key Map for location in the overall project area.

**DATA SOURCES:**  
 1. County of Huron (including Imagery: 2010)  
 2. Ministry of Natural Resources, © Queen's Printer for Ontario  
 3. Natural Resources Canada © Her Majesty the Queen in Right of Canada



Title  
**Grand Bend Wind Farm**  
**Grand Bend Wind Limited Partnership**  
**Environmental Impact Study**  
**Generalized Candidate SWH**

Prepared	P. Stubbert	Checked	T. Radburn	Figure Number	2d
Scale	1:10,000	Project	PIA019991		



### Project Infrastructure

	Wind Turbine Location		Participating Property
	Access Road & Collector Line		Access Road
	Access Road: For Construction (Temporary)		Collector Line
	Transmission Line		Existing Transmission Line: Overhead
	Area of Construction		Building / Transformer Sub-Station / Switching Yard
			Contour (5m Interval)

### ELC Classes

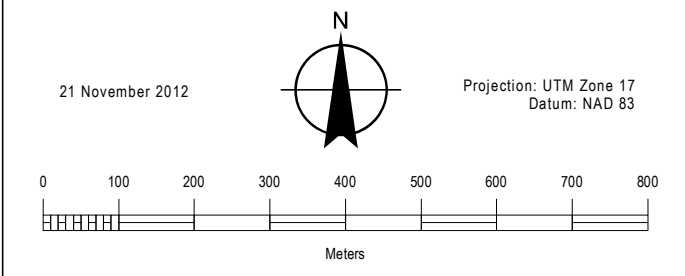
	Agriculture		120m From Project Location
	Forest		Study Area
	Open Water		Ecoregion 6E - 7E Division
	Cultural		
	Wetland: Marsh		
	Wetland: Swamp		

**NOTES:**

- Reference the Figure 1 Key Map for location in the overall project area.

**DATA SOURCES:**

- County of Huron (including Imagery: 2010)
- Ministry of Natural Resources, © Queen's Printer for Ontario
- Natural Resources Canada © Her Majesty the Queen in Right of Canada

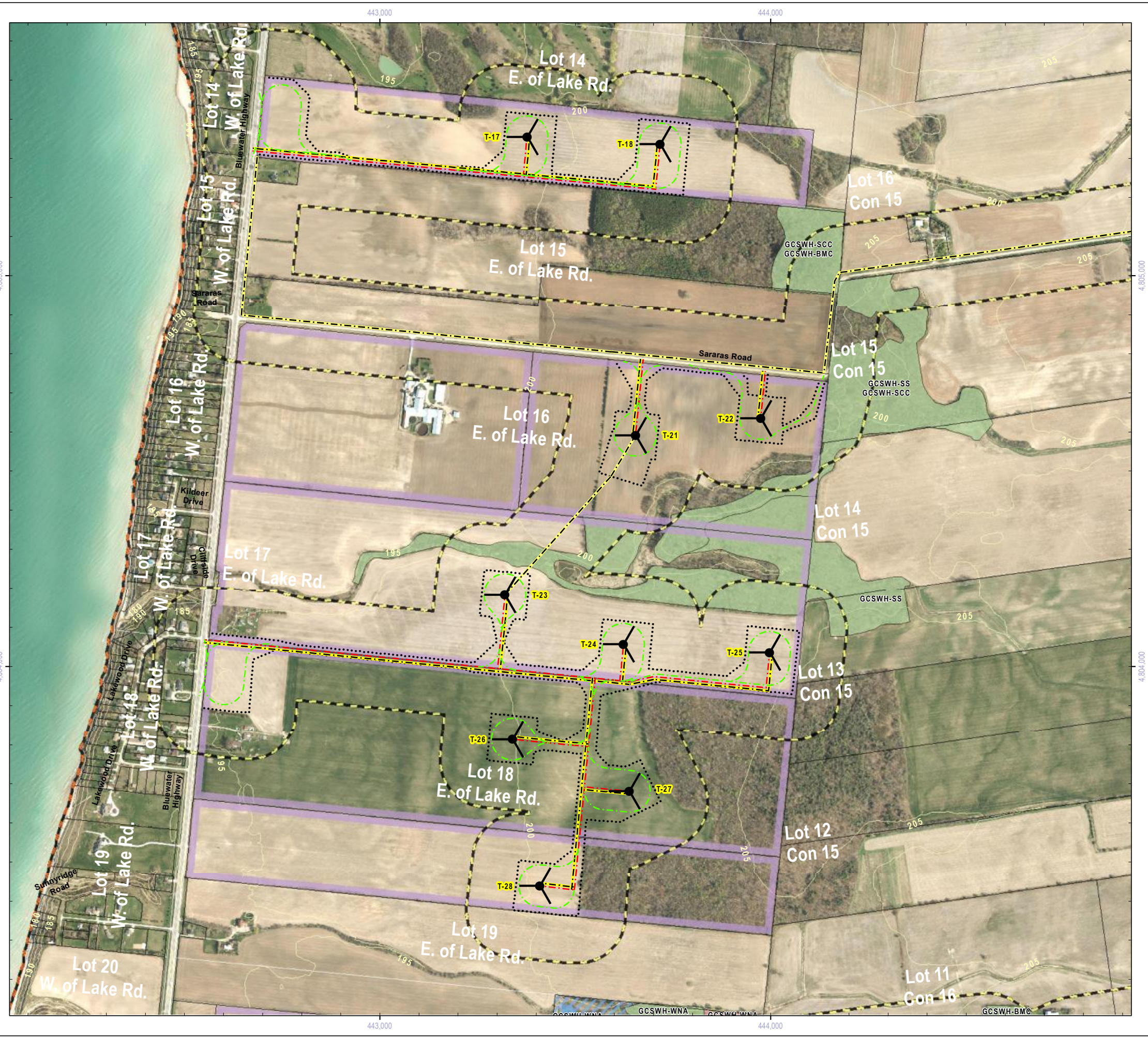


Title

**Grand Bend Wind Farm  
Grand Bend Wind Limited Partnership  
Environmental Impact Study  
Generalized Candidate SWH**

Prepared	P. Stubbert	Checked	T. Radburn	Figure Number	2e
Scale	1:10,000	Project	PIA019991		





### Project Infrastructure

	Wind Turbine Location		Participating Property
	Access Road & Collector Line		Access Road
	Access Road: For Construction (Temporary)		Collector Line
	Transmission Line		Existing Transmission Line: Overhead
	Area of Construction		Building / Transformer Sub-Station / Switching Yard
			Contour (5m Interval)

### ELC Classes

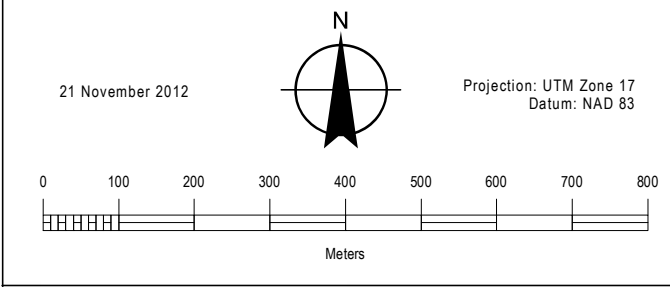
	Agriculture		120m From Project Location
	Forest		Study Area
	Open Water		Ecoregion 6E - 7E Division
	Cultural		
	Wetland: Marsh		
	Wetland: Swamp		

**NOTES:**

- Reference the Figure 1 Key Map for location in the overall project area.

**DATA SOURCES:**

- County of Huron (including Imagery: 2010)
- Ministry of Natural Resources, © Queen's Printer for Ontario
- Natural Resources Canada © Her Majesty the Queen in Right of Canada



Title

**Grand Bend Wind Farm  
Grand Bend Wind Limited Partnership  
Environmental Impact Study  
Generalized Candidate SWH**

Prepared	P. Stubbert	Checked	T. Radburn	Figure Number	2f
Scale	1:10,000	Project	PIA019991		



### Project Infrastructure

	Wind Turbine Location		Participating Property
	Access Road & Collector Line		Access Road
	Access Road: For Construction (Temporary)		Collector Line
	Transmission Line		Existing Transmission Line: Overhead
	Area of Construction		Building / Transformer Sub-Station / Switching Yard
			Contour (5m Interval)

### ELC Classes

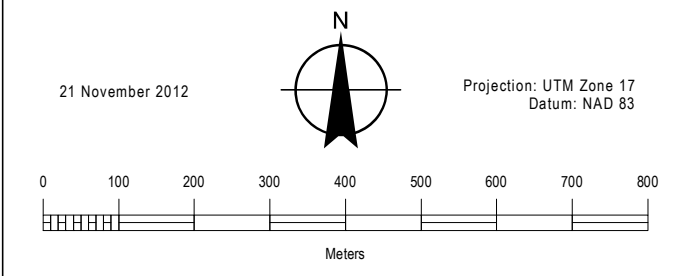
	Agriculture		120m From Project Location
	Forest		Study Area
	Open Water		Ecoregion 6E - 7E Division
	Cultural		
	Wetland: Marsh		
	Wetland: Swamp		

**NOTES:**

- Reference the Figure 1 Key Map for location in the overall project area.

**DATA SOURCES:**

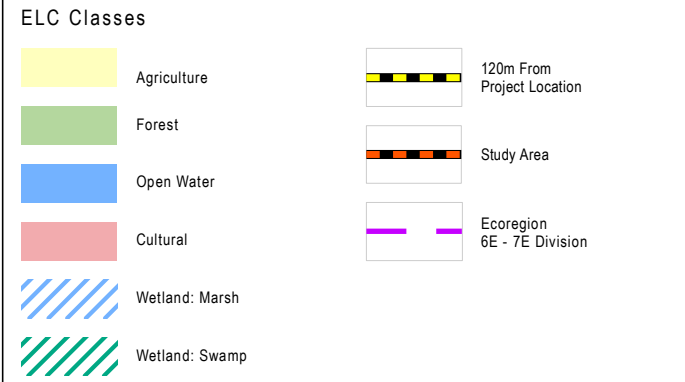
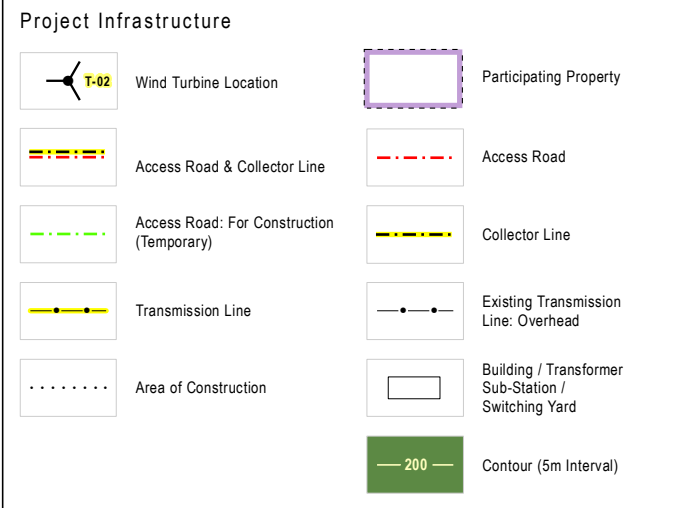
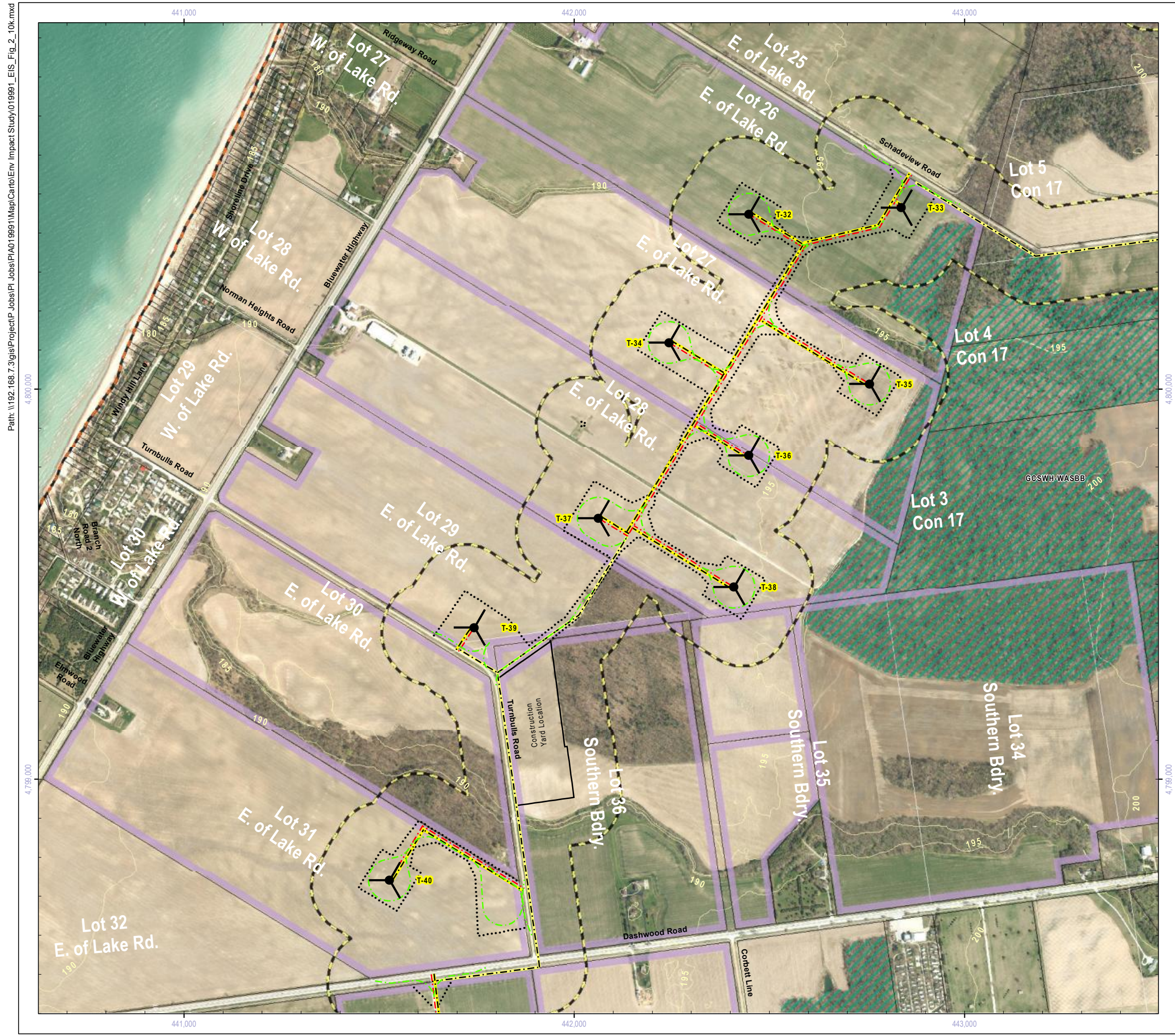
- County of Huron (including Imagery: 2010)
- Ministry of Natural Resources, © Queen's Printer for Ontario
- Natural Resources Canada © Her Majesty the Queen in Right of Canada



Title

**Grand Bend Wind Farm  
Grand Bend Wind Limited Partnership  
Environmental Impact Study  
Generalized Candidate SWH**

Prepared	P. Stubbert	Checked	T. Radburn	Figure Number	2g
Scale	1:10,000	Project	PIA019991		

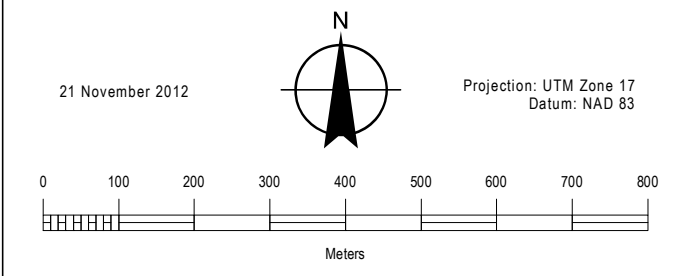


**NOTES:**

- Reference the Figure 1 Key Map for location in the overall project area.

**DATA SOURCES:**

- County of Huron (including Imagery: 2010)
- Ministry of Natural Resources, © Queen's Printer for Ontario
- Natural Resources Canada © Her Majesty the Queen in Right of Canada



Title

**Grand Bend Wind Farm  
Grand Bend Wind Limited Partnership  
Environmental Impact Study  
Generalized Candidate SWH**

Prepared	P. Stubbert	Checked	T. Radburn	Figure Number	2h
Scale	1:10,000	Project	PIA019991		



**Project Infrastructure**

	Wind Turbine Location		Participating Property
	Access Road & Collector Line		Access Road
	Access Road: For Construction (Temporary)		Collector Line
	Transmission Line		Existing Transmission Line: Overhead
	Area of Construction		Building / Transformer Sub-Station / Switching Yard
			Contour (5m Interval)

**ELC Classes**

	Agriculture		120m From Project Location
	Forest		Study Area
	Open Water		Ecoregion 6E - 7E Division
	Cultural		
	Wetland: Marsh		
	Wetland: Swamp		

**NOTES:**

- Reference the Figure 1 Key Map for location in the overall project area.

**DATA SOURCES:**

- County of Huron (including Imagery: 2010)
- Ministry of Natural Resources, © Queen's Printer for Ontario
- Natural Resources Canada © Her Majesty the Queen in Right of Canada

21 November 2012

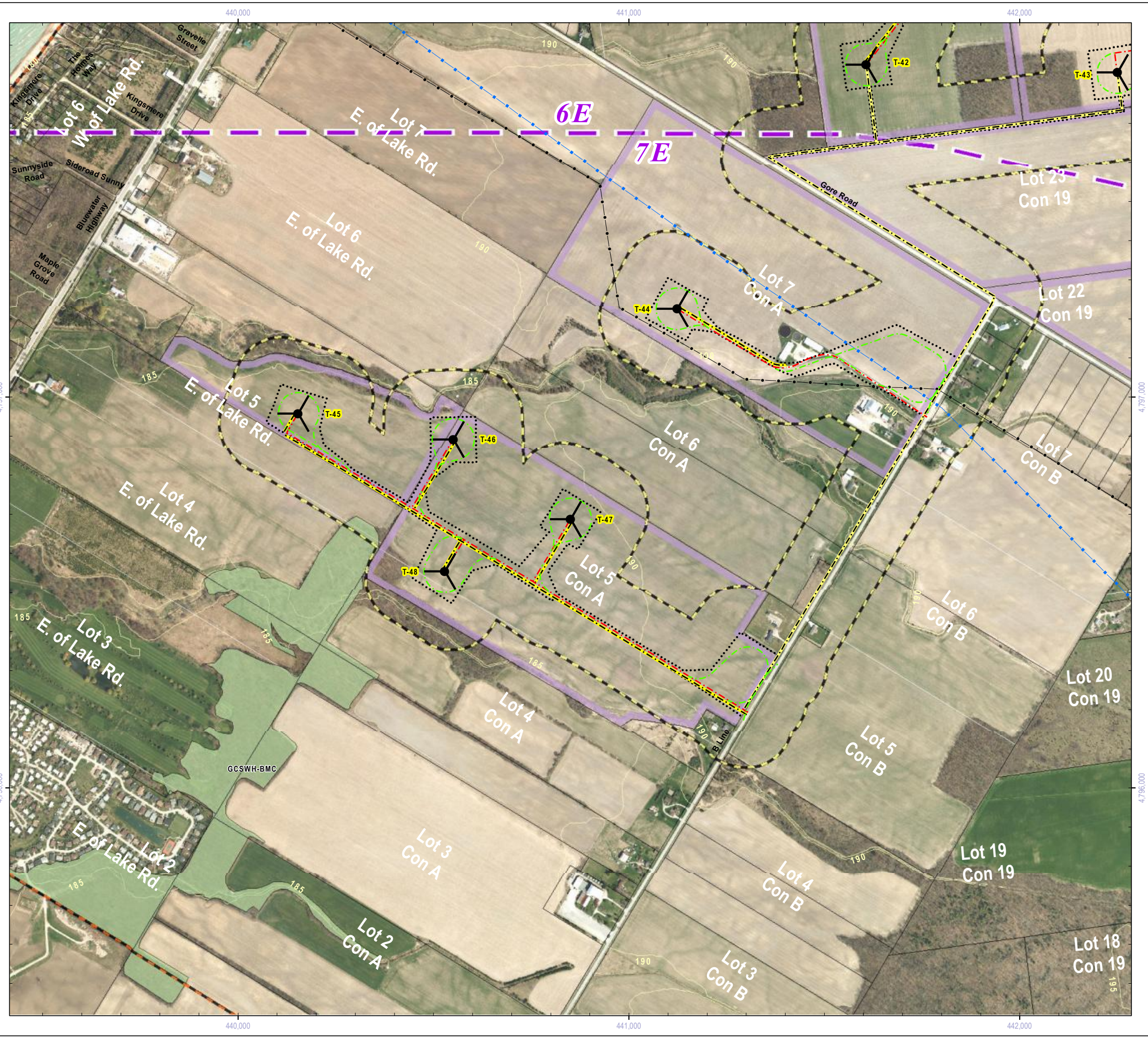
Projection: UTM Zone 17  
Datum: NAD 83

0 100 200 300 400 500 600 700 800  
Meters

**NEEGAN BURNSIDE**

Title  
Grand Bend Wind Farm  
Grand Bend Wind Limited Partnership  
Environmental Impact Study  
Generalized Candidate SWH

Prepared	P. Stubbert	Checked	T. Radburn	Figure Number	2i
Scale	1:10,000	Project	PIA019991		



### Project Infrastructure

	Wind Turbine Location		Participating Property
	Access Road & Collector Line		Access Road
	Access Road: For Construction (Temporary)		Collector Line
	Transmission Line		Existing Transmission Line: Overhead
	Area of Construction		Building / Transformer Sub-Station / Switching Yard
			Contour (5m Interval)

### ELC Classes

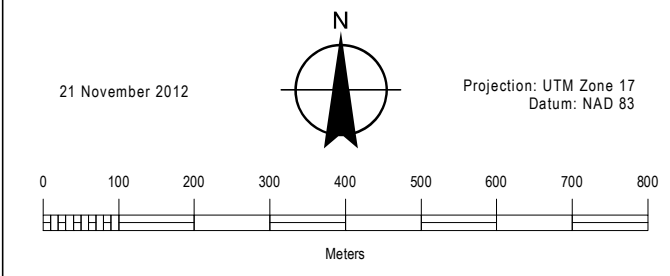
	Agriculture		120m From Project Location
	Forest		Study Area
	Open Water		Ecoregion 6E - 7E Division
	Cultural		
	Wetland: Marsh		
	Wetland: Swamp		

**NOTES:**

- Reference the Figure 1 Key Map for location in the overall project area.

**DATA SOURCES:**

- County of Huron (including Imagery: 2010)
- Ministry of Natural Resources, © Queen's Printer for Ontario
- Natural Resources Canada © Her Majesty the Queen in Right of Canada



Title  
**Grand Bend Wind Farm  
 Grand Bend Wind Limited Partnership  
 Environmental Impact Study  
 Generalized Candidate SWH**

Prepared	P. Stubbert	Checked	T. Radburn	Figure Number	2j
Scale	1:10,000	Project	PIA019991		



### Project Infrastructure

	Wind Turbine Location		Participating Property
	Access Road & Collector Line		Access Road
	Access Road: For Construction (Temporary)		Collector Line
	Transmission Line		Existing Transmission Line: Overhead
	Area of Construction		Building / Transformer Sub-Station / Switching Yard
			Contour (5m Interval)

### ELC Classes

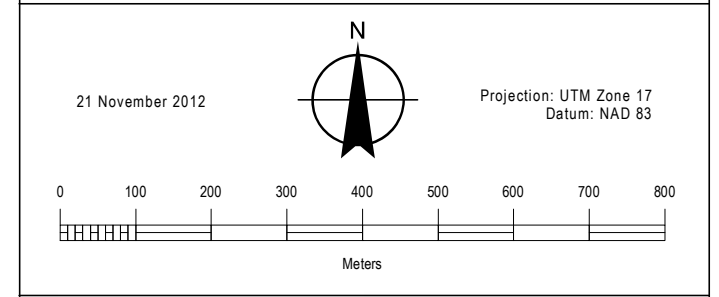
	Agriculture		120m From Project Location
	Forest		Study Area
	Open Water		Ecological Region 6E - 7E Division
	Cultural		
	Wetland: Marsh		
	Wetland: Swamp		

**NOTES:**

- Reference the Figure 1 Key Map for location in the overall project area.

**DATA SOURCES:**

- County of Huron (including Imagery: 2010)
- Ministry of Natural Resources, © Queen's Printer for Ontario
- Natural Resources Canada © Her Majesty the Queen in Right of Canada



Title

**Grand Bend Wind Farm  
Grand Bend Wind Limited Partnership  
Environmental Impact Study  
Generalized Candidate SWH**

Prepared	P. Stubbert	Checked	T. Radburn	Figure Number	2k
Scale	1:10,000	Project	PIA019991		



### Project Infrastructure

- Wind Turbine Location
- Collector Line
- Transmission Line
- Transformer Sub-Station or Switch Yard

### ELC Classes

- Agriculture
- Forest
- Open Water
- Cultural
- Wetland: Marsh
- Wetland: Swamp
- 120m From Project Location
- Study Area
- Ecoregion 6E - 7E Division

**NOTES:**

- Reference the Figure 1 Key Map for location in the overall project area.

**DATA SOURCES:**

- County of Huron (including Imagery: 2010)
- Ministry of Natural Resources, © Queen's Printer for Ontario
- Natural Resources Canada © Her Majesty the Queen in Right of Canada

21 November 2012

Projection: UTM Zone 17  
Datum: NAD 83



Title

**Grand Bend Wind Farm  
Grand Bend Wind Limited Partnership  
Environmental Impact Study  
Generalized Candidate SWH**

Prepared	P. Stubbert	Checked	T. Radburn	Figure Number
Scale	1:25,000	Project	PIA019991	<b>21</b>



### Project Infrastructure

- Wind Turbine Location
- Collector Line
- Transmission Line
- Transformer Sub-Station or Switch Yard

### ELC Classes

- Agriculture
- Forest
- Open Water
- Cultural
- Wetland: Marsh
- Wetland: Swamp
- 120m From Project Location
- Study Area
- Ecoregion 6E - 7E Division

**NOTES:**

- Reference the Figure 1 Key Map for location in the overall project area.

**DATA SOURCES:**

- County of Huron (including Imagery: 2010)
- Ministry of Natural Resources, © Queen's Printer for Ontario
- Natural Resources Canada © Her Majesty the Queen in Right of Canada

21 November 2012

Projection: UTM Zone 17  
Datum: NAD 83

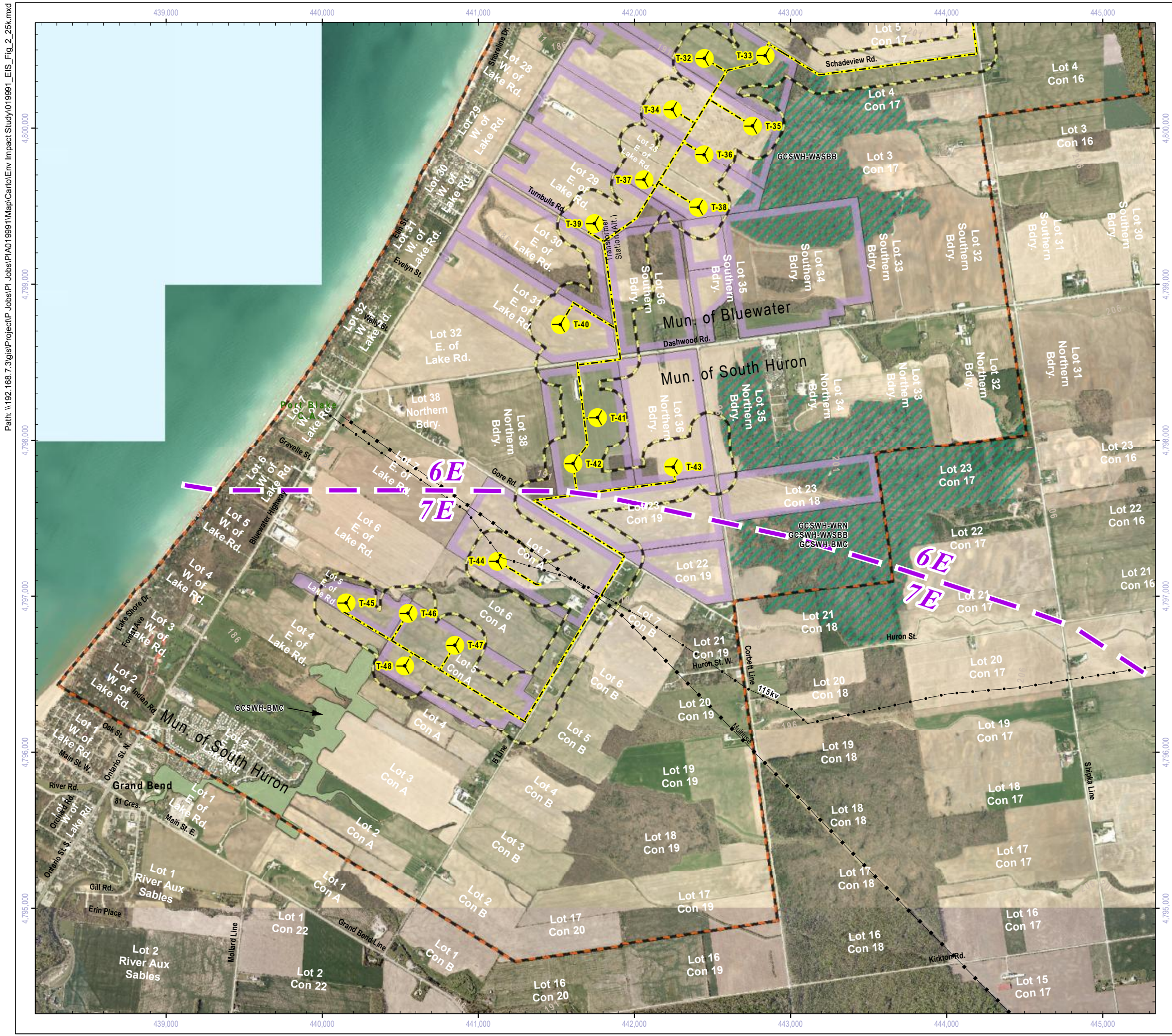


Title

**Grand Bend Wind Farm  
Grand Bend Wind Limited Partnership  
Environmental Impact Study  
Generalized Candidate SWH**

Prepared	P. Stubbert	Checked	T. Radburn	Figure Number	2m
Scale	1:25,000	Project	PIA019991		





### Project Infrastructure

- Wind Turbine Location
- Collector Line
- Transmission Line
- Transformer Sub-Station or Switch Yard

### ELC Classes

- Agriculture
- Forest
- Open Water
- Cultural
- Wetland: Marsh
- Wetland: Swamp
- 120m From Project Location
- Study Area
- Ecoregion 6E - 7E Division

**NOTES:**

- Reference the Figure 1 Key Map for location in the overall project area.

**DATA SOURCES:**

- County of Huron (including Imagery: 2010)
- Ministry of Natural Resources, © Queen's Printer for Ontario
- Natural Resources Canada © Her Majesty the Queen in Right of Canada

21 November 2012

Projection: UTM Zone 17  
Datum: NAD 83

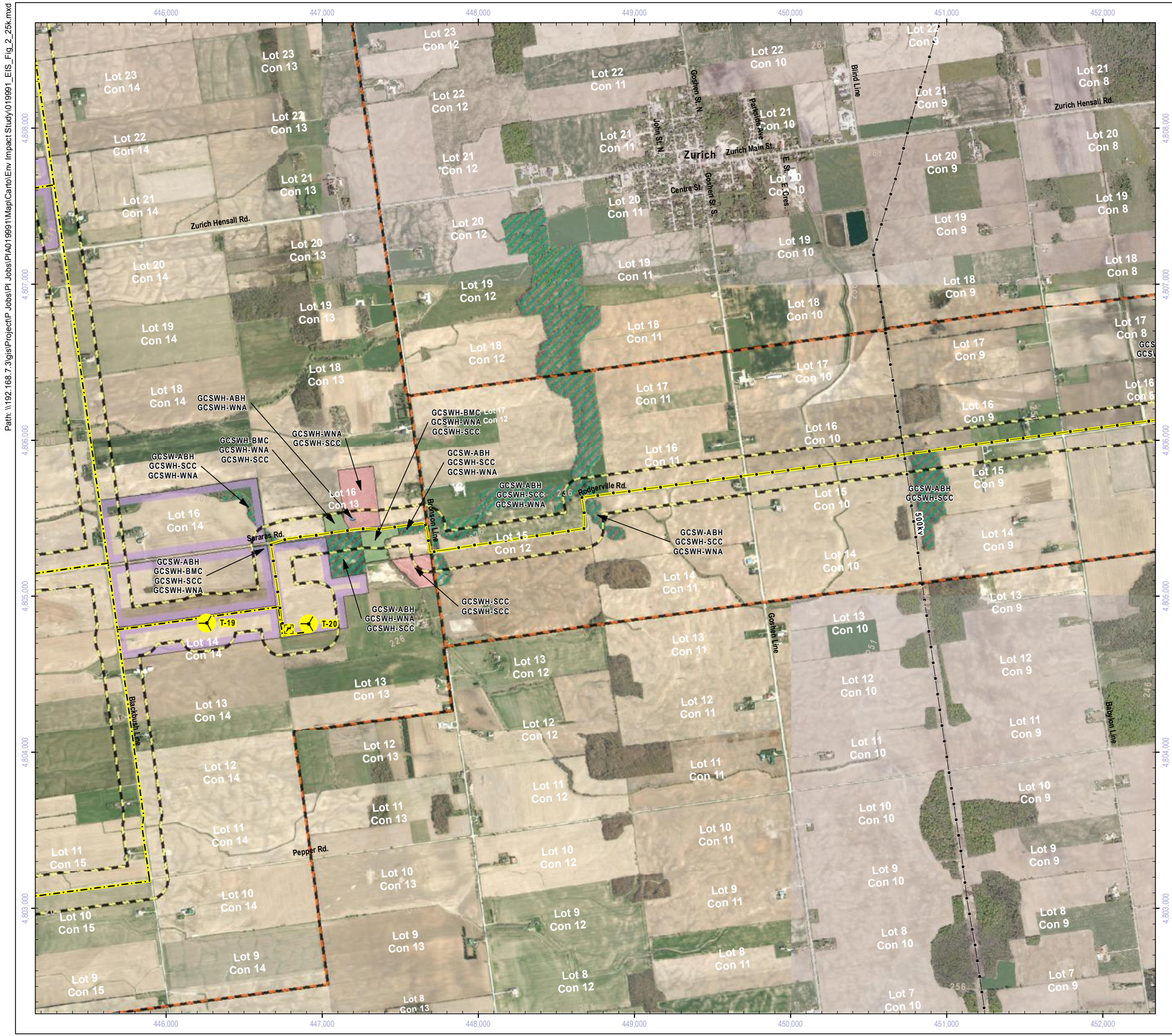
Meters



Title

**Grand Bend Wind Farm  
Grand Bend Wind Limited Partnership  
Environmental Impact Study  
Generalized Candidate SWH**

Prepared	P. Stubbert	Checked	T. Radburn	Figure Number
Scale	1:25,000	Project	PIA019991	<b>2n</b>



### Project Infrastructure

- Wind Turbine Location
- Collector Line
- Transmission Line
- Transformer Sub-Station or Switch Yard

### ELC Classes

- Agriculture
- Forest
- Open Water
- Cultural
- Wetland: Marsh
- Wetland: Swamp
- 120m From Project Location
- Study Area
- Ecoregion 6E - 7E Division

**NOTES:**

- Reference the Figure 1 Key Map for location in the overall project area.

**DATA SOURCES:**

- County of Huron (including Imagery: 2010)
- Ministry of Natural Resources, © Queen's Printer for Ontario
- Natural Resources Canada © Her Majesty the Queen in Right of Canada

21 November 2012

Projection: UTM Zone 17  
Datum: NAD 83



Title

**Grand Bend Wind Farm  
Grand Bend Wind Limited Partnership  
Environmental Impact Study  
Generalized Candidate SWH**

Prepared	P. Stubbert	Checked	T. Radburn	Figure Number
Scale	1:25,000	Project	PIA019991	<b>20</b>



### Project Infrastructure

- Wind Turbine Location
- Collector Line
- Transmission Line
- Transformer Sub-Station or Switch Yard

### ELC Classes

- Agriculture
- Forest
- Open Water
- Cultural
- Wetland: Marsh
- Wetland: Swamp
- 120m From Project Location
- Study Area
- Ecoregion 6E - 7E Division

**NOTES:**

- Reference the Figure 1 Key Map for location in the overall project area.

**DATA SOURCES:**

- County of Huron (including Imagery: 2010)
- Ministry of Natural Resources, © Queen's Printer for Ontario
- Natural Resources Canada © Her Majesty the Queen in Right of Canada

21 November 2012

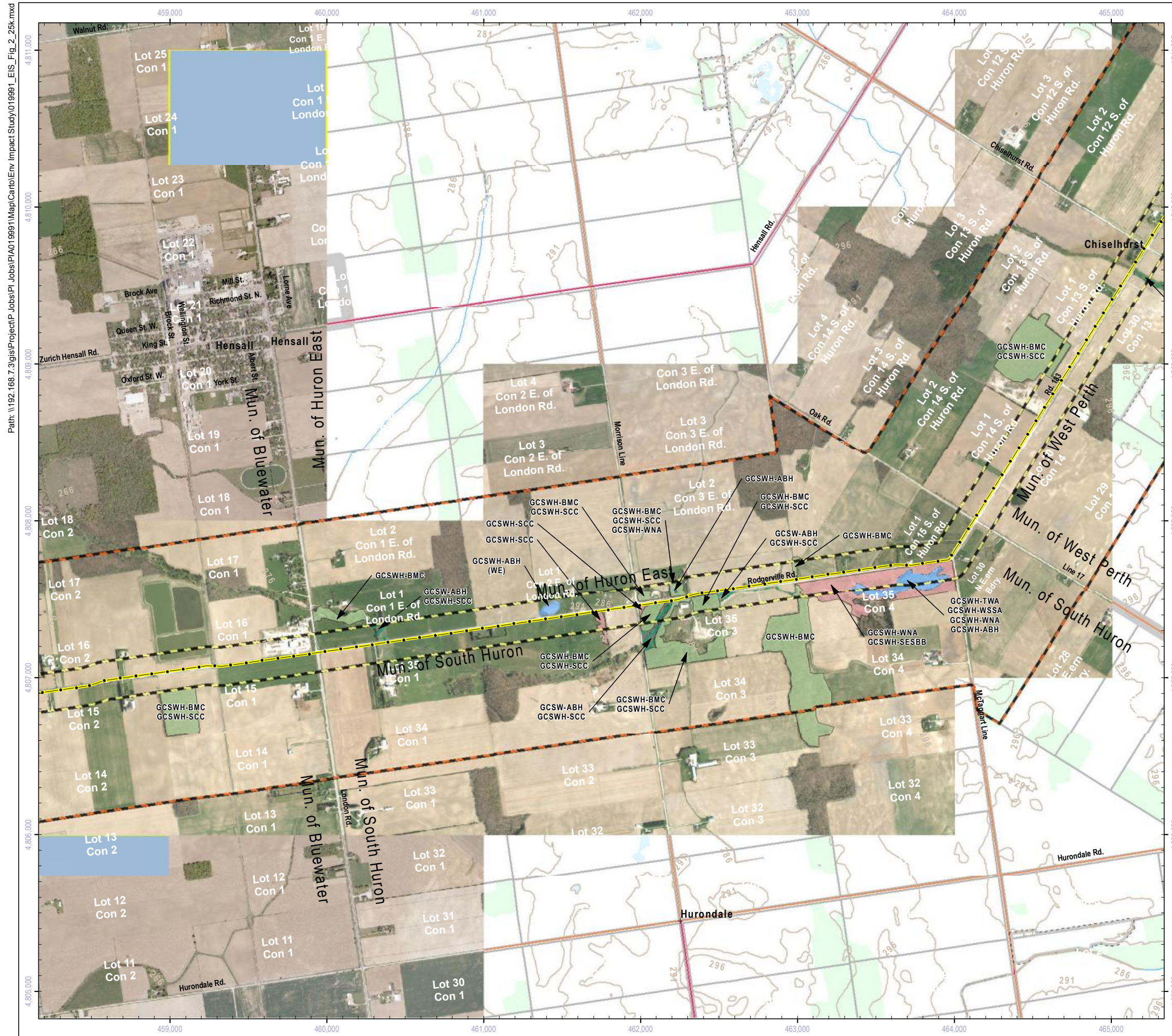
Projection: UTM Zone 17  
Datum: NAD 83



Title

**Grand Bend Wind Farm  
Grand Bend Wind Limited Partnership  
Environmental Impact Study  
Generalized Candidate SWH**

Prepared	P. Stubbert	Checked	T. Radburn	Figure Number
Scale	1:25,000	Project	PIA019991	<b>2p</b>



**Project Infrastructure**

- Wind Turbine Location
- Collector Line
- Transmission Line
- Transformer Sub-Station or Switch Yard

**ELC Classes**

- Agriculture
- Forest
- Open Water
- Cultural
- Wetland: Marsh
- Wetland: Swamp
- 120m From Project Location
- Study Area
- Ecoregion 6E - 7E Division

**NOTES:**

- Reference the Figure 1 Key Map for location in the overall project area.

**DATA SOURCES:**

- County of Huron (including Imagery: 2010)
- Ministry of Natural Resources, © Queen's Printer for Ontario
- Natural Resources Canada © Her Majesty the Queen in Right of Canada

21 November 2012

Projection: UTM Zone 17  
Datum: NAD 83

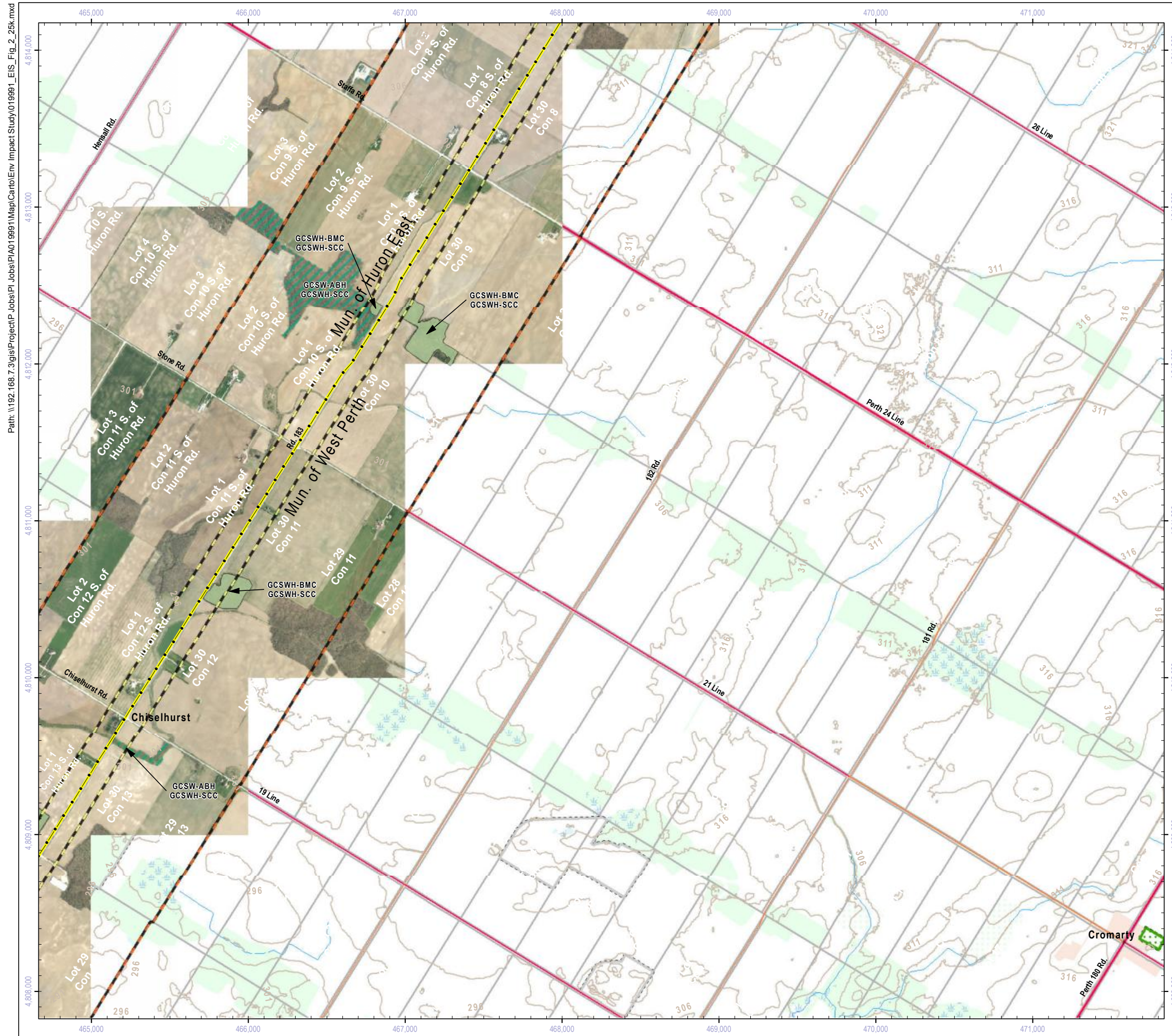
0 1,000 2,000  
Meters

**NEEGAN BURNSIDE**

Title

**Grand Bend Wind Farm  
Grand Bend Wind Limited Partnership  
Environmental Impact Study  
Generalized Candidate SWH**

Prepared	P. Stubbert	Checked	T. Radburn	Figure Number
Scale	1:25,000	Project	PIA019991	<b>2q</b>



### Project Infrastructure

- Wind Turbine Location
- Collector Line
- Transmission Line
- Transformer Sub-Station or Switch Yard

### ELC Classes

- Agriculture
- Forest
- Open Water
- Cultural
- Wetland: Marsh
- Wetland: Swamp
- 120m From Project Location
- Study Area
- Ecoregion 6E - 7E Division

**NOTES:**

- Reference the Figure 1 Key Map for location in the overall project area.

**DATA SOURCES:**

- County of Huron (including Imagery: 2010)
- Ministry of Natural Resources, © Queen's Printer for Ontario
- Natural Resources Canada © Her Majesty the Queen in Right of Canada

21 November 2012

Projection: UTM Zone 17  
Datum: NAD 83

Meters



Title

**Grand Bend Wind Farm  
Grand Bend Wind Limited Partnership  
Environmental Impact Study  
Generalized Candidate SWH**

Prepared	P. Stubbert	Checked	T. Radburn	Figure Number
Scale	1:25,000	Project	PIA019991	<b>2r</b>



**Project Infrastructure**

- Wind Turbine Location
- Collector Line
- Transmission Line
- Transformer Sub-Station or Switch Yard

**ELC Classes**

- Agriculture
- Forest
- Open Water
- Cultural
- Wetland: Marsh
- Wetland: Swamp
- 120m From Project Location
- Study Area
- Ecoregion 6E - 7E Division

**NOTES:**

- Reference the Figure 1 Key Map for location in the overall project area.

**DATA SOURCES:**

- County of Huron (including Imagery: 2010)
- Ministry of Natural Resources, © Queen's Printer for Ontario
- Natural Resources Canada © Her Majesty the Queen in Right of Canada

21 November 2012

Projection: UTM Zone 17  
Datum: NAD 83

0 1,000 2,000  
Meters

**NEEGAN BURNSIDE**

Title

**Grand Bend Wind Farm  
Grand Bend Wind Limited Partnership  
Environmental Impact Study  
Generalized Candidate SWH**

Prepared	P. Stubbert	Checked	T. Radburn	Figure Number
Scale	1:25,000	Project	PIA019991	<b>2s</b>

Path: \\192.168.7.3\gis\Project\PIA019991\Map\Carto\Env Impact Study\019991\_EIS\_Fig\_2\_25k.mxd