



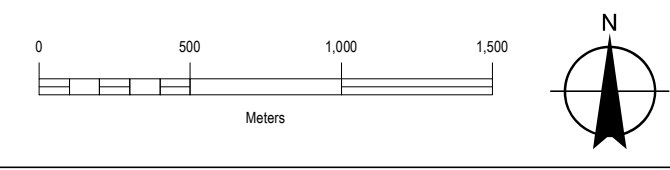
-  Wind Turbine Location
-  120m From Project Location



Title  
**Grand Bend Wind Farm  
 Grand Bend Wind Limited Partnership  
 Evaluation of Significance Report  
 Significant Wildlife Habitat**

Prepared	P. Stubbert	Checked	T. Radburn	Figure Number
Scale	1:150,000	Project	PIA019991	<b>5 - Key Map</b>

Note: All infrastructure shown on the map represents proposed locations



	Wind Turbine Location		Transformer Sub-Station; Switching Yard		Turtle Wintering Area		Species of Conservation Concern
	120m From Project Location		Access Road & Collector Line		Turtle Nesting Area		Ecoregion 6E - 7E Division
	Study Area		Access Road		Deer Wintering Yard		Amphibian Breeding Habitat
	Transmission Line		Access Road: For Construction (Temporary)		Bat Maternal Colonies		
	Collector Line		Area of Construction Disturbance				



Title  
**Grand Bend Wind Farm  
 Grand Bend Wind Limited Partnership  
 Evaluation of Significance Report  
 Significant Wildlife Habitat**

Prepared	P. Stubbert	Checked	T. Radburn	Figure Number	<b>5a</b>
Scale	1:25,000	Project	PIA019991		

Note: All infrastructure shown on the map represents proposed locations

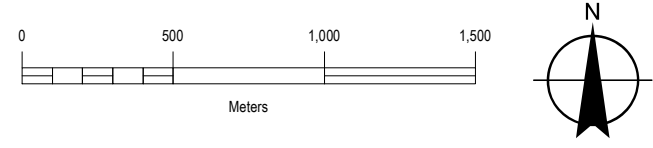
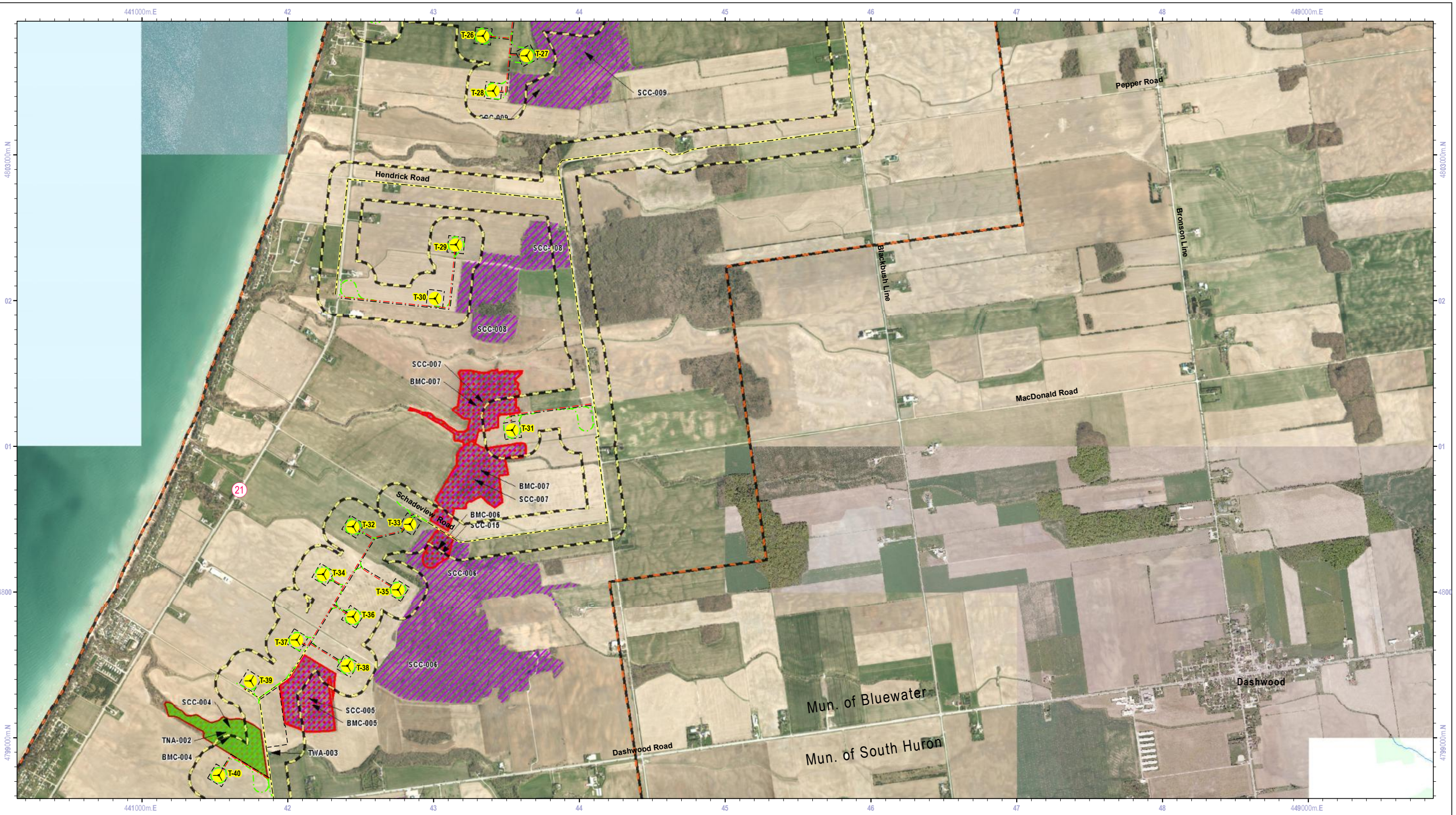


Date: 21 November 2012

Wind Turbine Location	Transformer Sub-Station; Switching Yard	Turtle Wintering Area	Species of Conservation Concern
120m From Project Location	Access Road & Collector Line	Turtle Nesting Area	Ecoregion 6E - 7E Division
Study Area	Access Road	Deer Wintering Yard	Amphibian Breeding Habitat
Transmission Line	Access Road: For Construction (Temporary)	Bat Maternal Colonies	
Collector Line	Area of Construction Disturbance		

Title <b>Grand Bend Wind Farm Grand Bend Wind Limited Partnership Evaluation of Significance Report Significant Wildlife Habitat</b>			
Prepared	P. Stubbert	Checked	T. Radburn
Scale	1:25,000	Project	PIA019991
			Figure Number <b>5b</b>

Note: All infrastructure shown on the map represents proposed locations



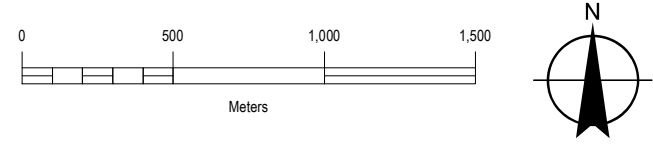
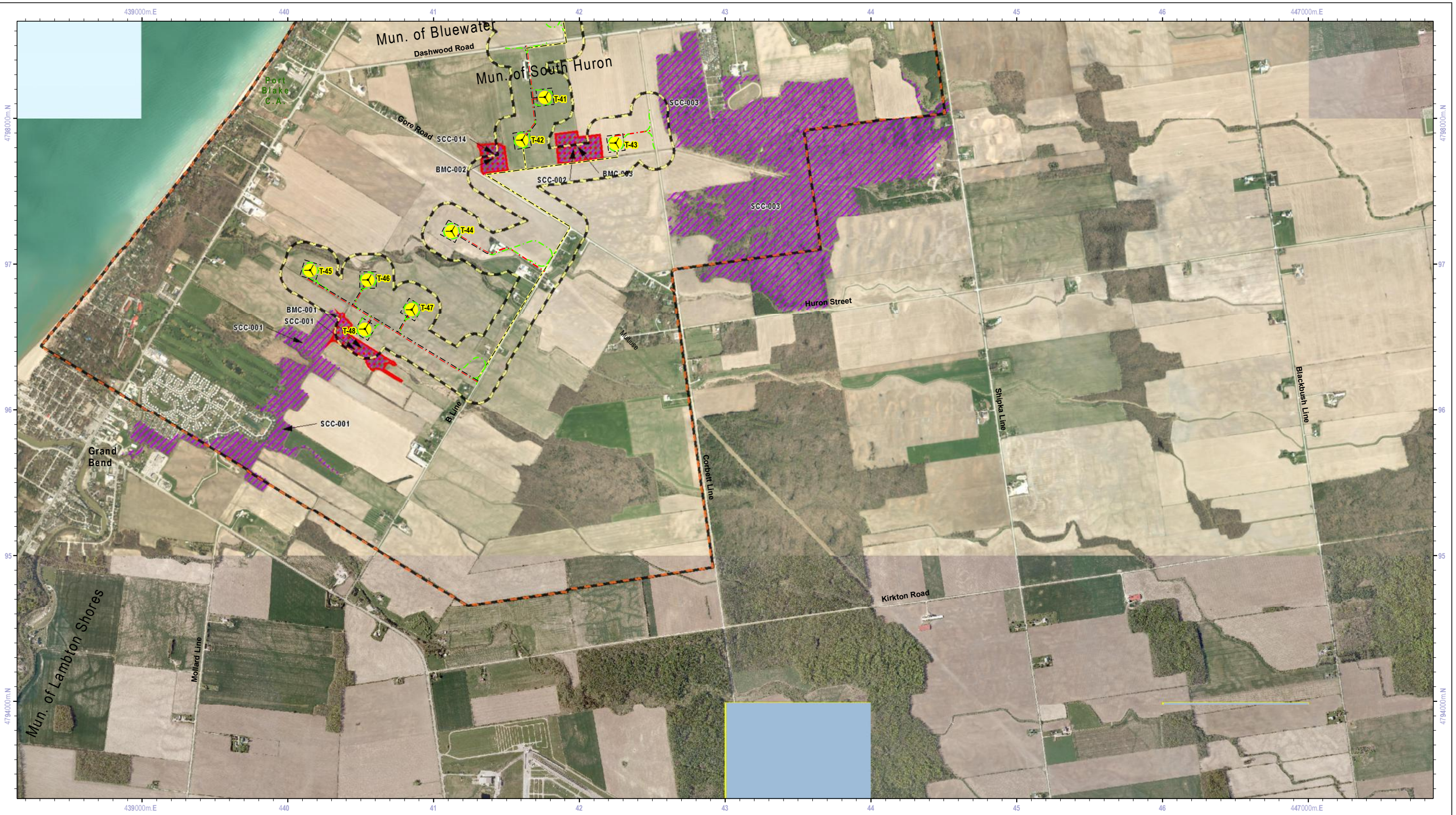
- Wind Turbine Location
- Transformer Sub-Station; Switching Yard
- Turtle Wintering Area
- Species of Conservation Concern
- 120m From Project Location
- Access Road & Collector Line
- Turtle Nesting Area
- Ecoregion 6E - 7E Division
- Study Area
- Access Road
- Deer Wintering Area
- Transmission Line
- Access Road: For Construction (Temporary)
- Amphibian Breeding Habitat
- Collector Line
- Area of Construction Disturbance
- Bat Maternal Colonies



Title  
**Grand Bend Wind Farm  
 Grand Bend Wind Limited Partnership  
 Evaluation of Significance Report  
 Significant Wildlife Habitat**

Prepared	P. Stubbert	Checked	T. Radburn
Scale	1:25,000	Project	PIA019991
			Figure Number <b>5c</b>

Note: All infrastructure shown on the map represents proposed locations



Wind Turbine Location	Transformer Sub-Station; Switching Yard	Turtle Wintering Area	Species of Conservation Concern
120m From Project Location	Access Road & Collector Line	Turtle Nesting Area	Ecoregion 6E - 7E Division
Study Area	Access Road	Deer Wintering Yard	Amphibian Breeding Habitat
Transmission Line	Access Road: For Construction (Temporary)	Bat Maternal Colonies	
Collector Line	Area of Construction Disturbance		



Title <b>Grand Bend Wind Farm Grand Bend Wind Limited Partnership Evaluation of Significance Report Significant Wildlife Habitat</b>			
Prepared	P. Stubbert	Checked	T. Radburn
Scale	1:25,000	Project	PIA019991
			Figure Number <b>5d</b>

Note: All infrastructure shown on the map represents proposed locations

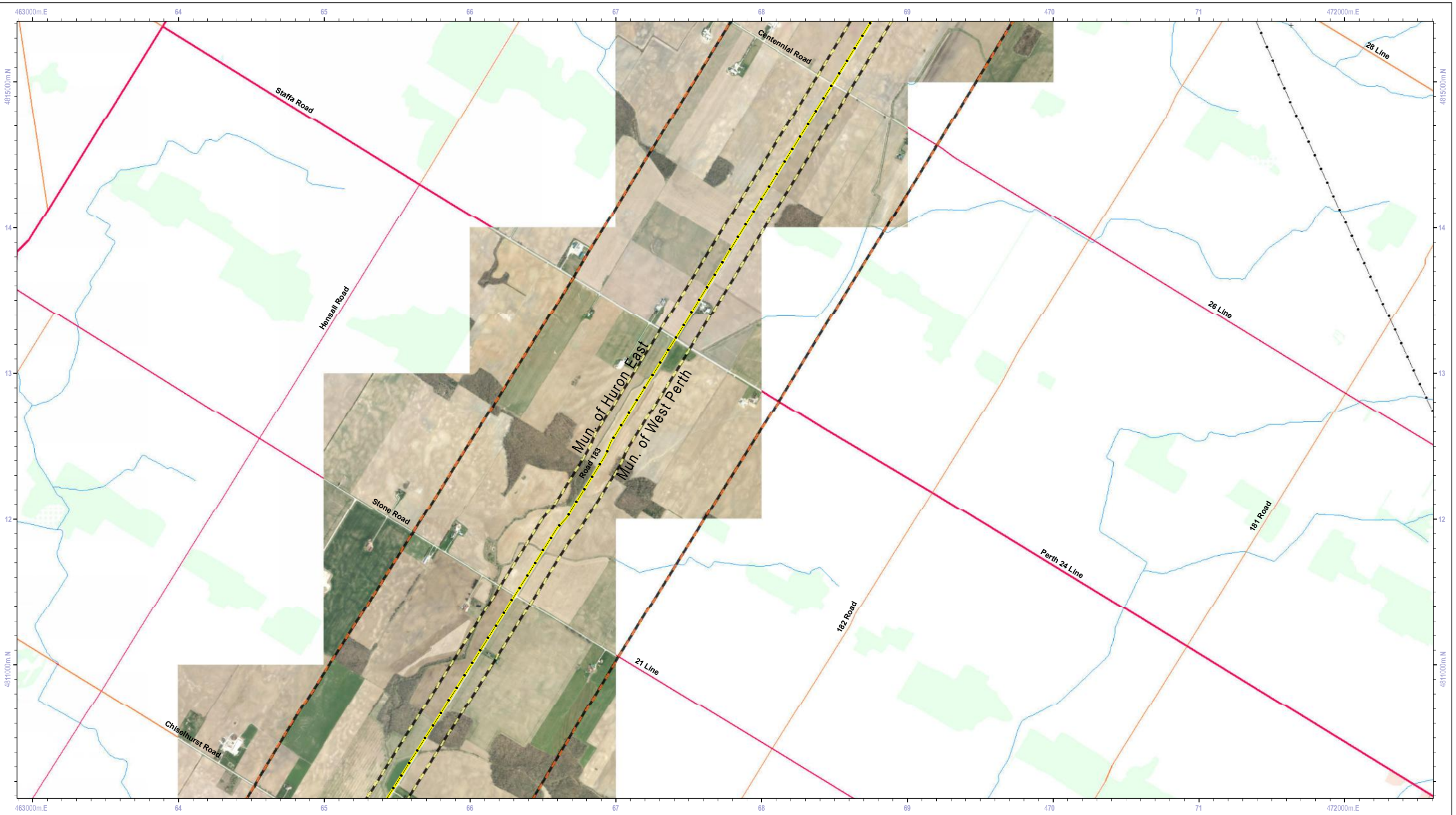


	Wind Turbine Location		Transformer Sub-Station; Switching Yard		Turtle Wintering Area		Species of Conservation Concern
	120m From Project Location		Access Road & Collector Line		Turtle Nesting Area		Ecoregion 6E - 7E Division
	Study Area		Access Road		Deer Wintering Yard		
	Transmission Line		Access Road: For Construction (Temporary)		Amphibian Breeding Habitat		
	Collector Line		Area of Construction Disturbance		Bat Maternal Colonies		

Note: All infrastructure shown on the map represents proposed locations

Title				Figure Number
Grand Bend Wind Farm Grand Bend Wind Limited Partnership Evaluation of Significance Report Significant Wildlife Habitat				
Prepared	P. Stubbert	Checked	T. Radburn	
Scale	1:25,000	Project	PIA019991	5e





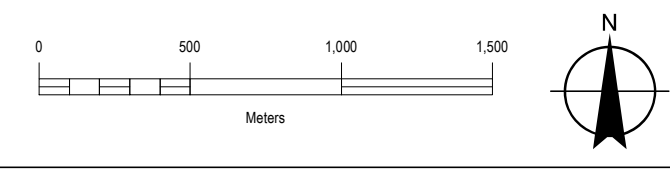
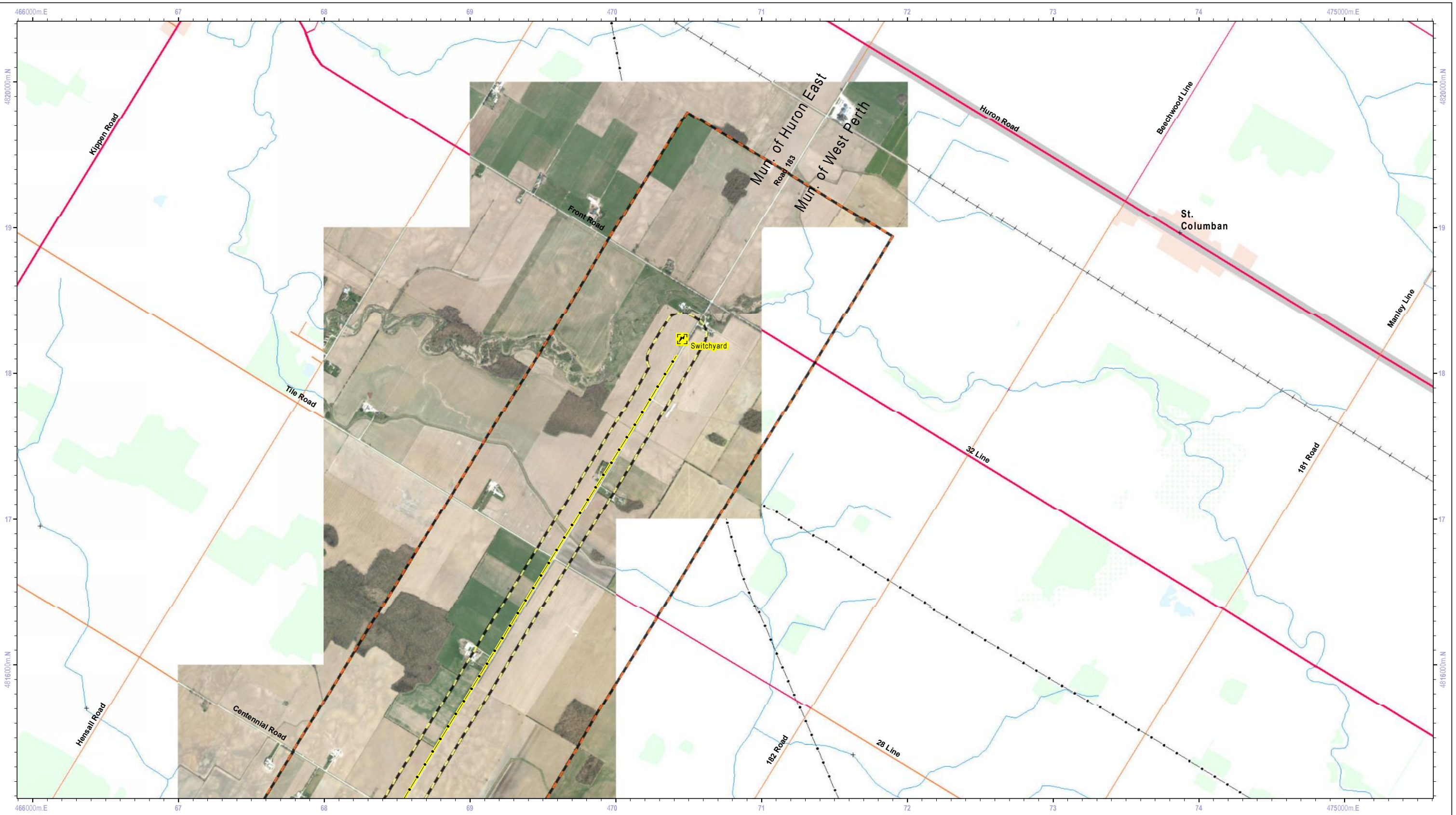
0 500 1,000 1,500  
Meters

Wind Turbine Location	Transformer Sub-Station; Switching Yard	Turtle Wintering Area
120m From Project Location	Access Road & Collector Line	Turtle Nesting Area
Study Area	Access Road	Deer Wintering Yard
Transmission Line	Access Road: For Construction (Temporary)	Amphibian Breeding Habitat
Collector Line	Area of Construction Disturbance	Bat Maternal Colonies
		Species of Conservation Concern
		Ecoregion 6E - 7E Division

Note: All infrastructure shown on the map represents proposed locations

Title <b>Grand Bend Wind Farm Grand Bend Wind Limited Partnership Evaluation of Significance Report Significant Wildlife Habitat</b>			
Prepared	P. Stubbert	Checked	T. Radburn
Scale	1:25,000	Project	PIA019991
Figure Number			<b>5g</b>





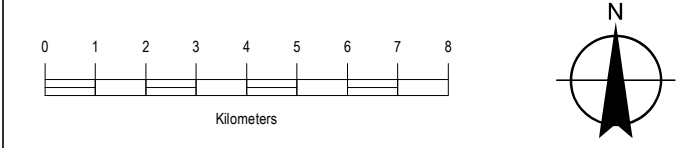
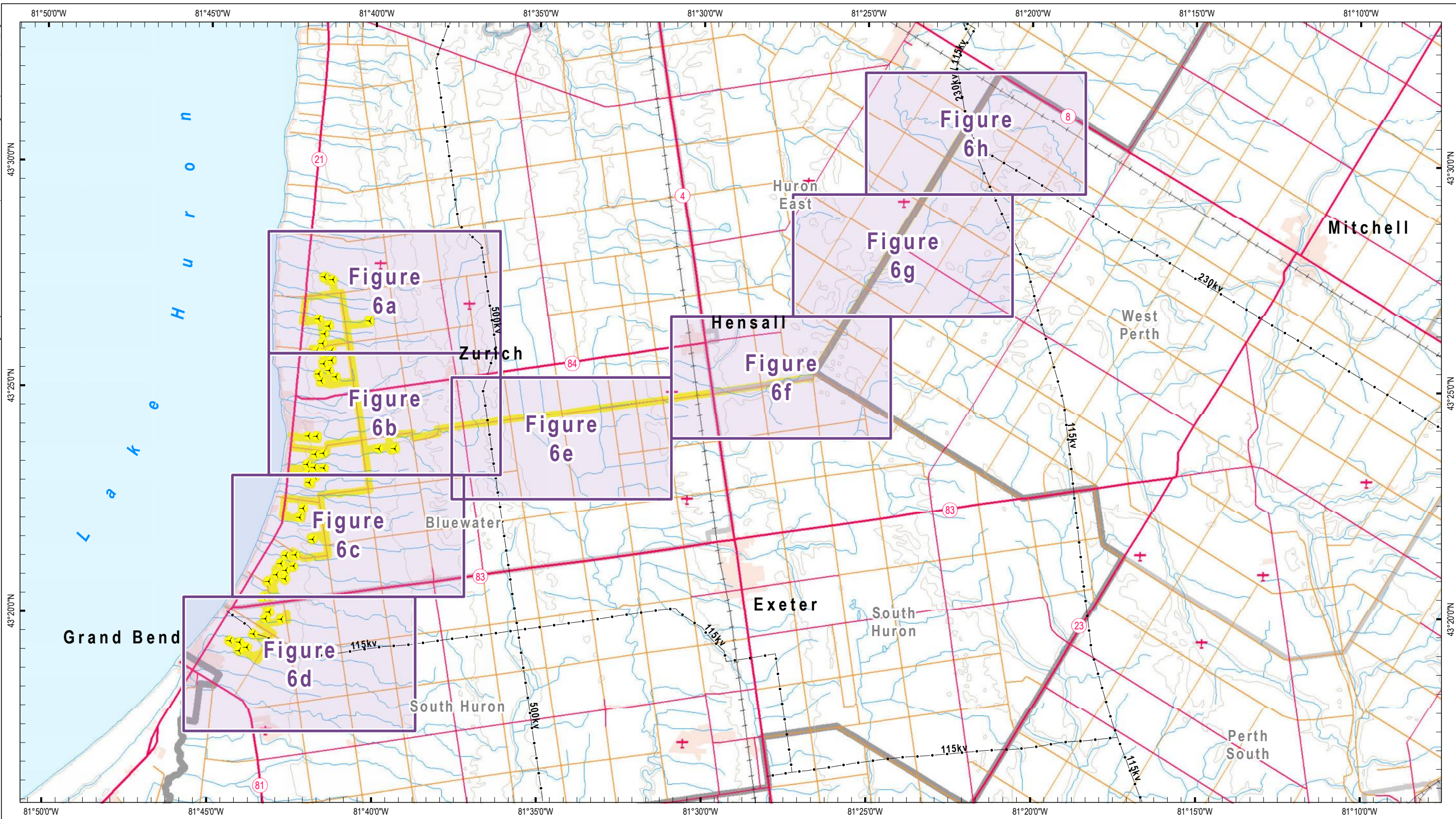
	Wind Turbine Location		Transformer Sub-Station; Switching Yard		Turtle Wintering Area		Species of Conservation Concern
	120m From Project Location		Access Road & Collector Line		Turtle Nesting Area		Ecoregion 6E - 7E Division
	Study Area		Access Road		Deer Wintering Yard		Amphibian Breeding Habitat
	Transmission Line		Access Road: For Construction (Temporary)		Bat Maternal Colonies		
	Collector Line		Area of Construction Disturbance				





Title  
**Grand Bend Wind Farm  
 Grand Bend Wind Limited Partnership  
 Evaluation of Significance Report  
 Significant Wildlife Habitat**

Prepared	P. Stubbert	Checked	T. Radburn	Figure Number	<b>5h</b>
Scale	1:25,000	Project	PIA019991		

Note: All infrastructure shown on the map represents proposed locations



-  Wind Turbine Location
-  120m From Project Location



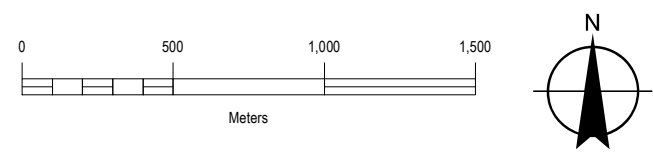
Title  
**Grand Bend Wind Farm  
 Grand Bend Wind Limited Partnership  
 Evaluation of Significance Report  
 Generalized Candidate SWH**

Prepared	P. Stubbert	Checked	T. Radburn	Figure Number
Scale	1:150,000	Project	PIA019991	<b>6 - Key Map</b>

Note: All infrastructure shown on the map represents proposed locations



SWH Code	Description
ABH	Amphibian Breeding Habitat (Woodland)
ABH (WE)	Amphibian Breeding Habitat (Wetland)
BMC	Bat Maternal Colony
SCC	Species of Conservation Concern
SS	Seeps & Springs
TNA	Turtle Nesting Area
TWA	Turtle Wintering Area
WASBB	Woodland Area Sensitive Breeding Birds
WRN	Woodland Raptor Nesting
WSSA	Waterfowl Stopover Staging Aquatic
WNA	Waterfowl Nesting Area
SESBB	Shrub/Early Successional Bird Breeding Habitat



Wind Turbine Location	Transformer Sub-Station, Switching Yard	Ecoregion 6E - 7E Division	<b>ELC Classes</b>	Wetland: Marsh
120m From Project Location	Access Road & Collector Line		Forest	Wetland: Swamp
Study Area	Access Road		Open Water	
Transmission Line	Access Road: For Construction (Temporary)		Cultural	
Collector Line	Area of Construction Disturbance			



Title  
**Grand Bend Wind Farm**  
 Grand Bend Wind Limited Partnership  
 Evaluation of Significance Report  
 Generalized Candidate SWH

Prepared	P. Stubbert	Checked	T. Radburn	Figure Number
Scale	1:25,000	Project	PIA019991	<b>6a</b>

Note: All infrastructure shown on the map represents proposed locations



0 500 1,000 1,500  
Meters

**NEEGAN BURNSIDE**

Wind Turbine Location	Transformer Sub-Station; Switching Yard	Ecoregion 6E - 7E Division	Forest	Wetland: Marsh
120m From Project Location	Access Road & Collector Line		Open Water	Wetland: Swamp
Study Area	Access Road		Cultural	
Transmission Line	Access Road: For Construction (Temporary)			
Collector Line	Area of Construction Disturbance			

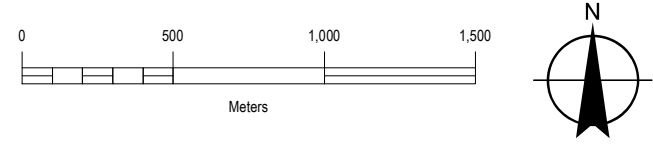
Note: All infrastructure shown on the map represents proposed locations

Title  
**Grand Bend Wind Farm  
Grand Bend Wind Limited Partnership  
Evaluation of Significance Report  
Generalized Candidate SWH**

Prepared P. Stubbert	Checked T. Radburn	Figure Number <b>6b</b>
Scale 1:25,000	Project PIA019991	



SWH Code	Description
ABH	Amphibian Breeding Habitat (Woodland)
ABH (WE)	Amphibian Breeding Habitat (Wetland)
BMC	Bat Maternal Colony
SCC	Species of Conservation Concern
SS	Seeps & Springs
TNA	Turtle Nesting Area
TWA	Turtle Wintering Area
WASBB	Woodland Area Sensitive Breeding Birds
WRN	Woodland Raptor Nesting
WSSA	Waterfowl Stopover Staging Aquatic
WNA	Waterfowl Nesting Area
SESBB	Shrub/Early Successional Bird Breeding Habitat



- Wind Turbine Location
- 120m From Project Location
- Study Area
- Transmission Line
- Collector Line
- Transformer Sub-Station, Switching Yard
- Access Road & Collector Line
- Access Road
- Access Road: For Construction (Temporary)
- Area of Construction Disturbance
- Ecoregion 6E - 7E Division

- ELC Classes**
- Forest
  - Open Water
  - Cultural
  - Wetland: Marsh
  - Wetland: Swamp

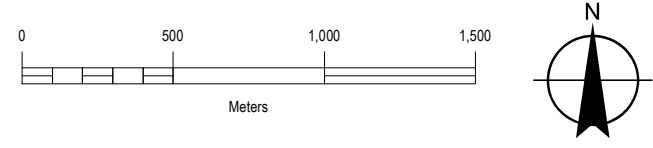


Title <b>Grand Bend Wind Farm Grand Bend Wind Limited Partnership Evaluation of Significance Report Generalized Candidate SWH</b>			
Prepared	P. Stubbert	Checked	T. Radburn
Scale	1:25,000	Project	PIA019991
			Figure Number <b>6c</b>

Note: All infrastructure shown on the map represents proposed locations



SWH Code	Description
ABH	Amphibian Breeding Habitat (Woodland)
ABH (WE)	Amphibian Breeding Habitat (Wetland)
BMC	Bat Maternal Colony
SCC	Species of Conservation Concern
SS	Seeps & Springs
TNA	Turtle Nesting Area
TWA	Turtle Wintering Area
WASBB	Woodland Area Sensitive Breeding Birds
WRN	Woodland Raptor Nesting
WSSA	Waterfowl Stopover Staging Aquatic
WNA	Waterfowl Nesting Area
SESBB	Shrub/Early Successional Bird Breeding Habitat



- Wind Turbine Location
- 120m From Project Location
- Study Area
- Transmission Line
- Collector Line
- Transformer Sub-Station, Switching Yard
- Access Road & Collector Line
- Access Road
- Access Road: For Construction (Temporary)
- Area of Construction Disturbance
- Ecoregion 6E - 7E Division

- ELC Classes**
- Forest
  - Open Water
  - Cultural
  - Wetland: Marsh
  - Wetland: Swamp

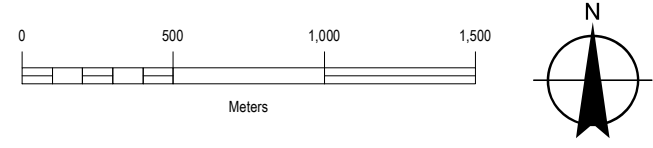


Title			
Grand Bend Wind Farm Grand Bend Wind Limited Partnership Evaluation of Significance Report Generalized Candidate SWH			
Prepared	P. Stubbert	Checked	T. Radburn
Scale	1:25,000	Project	PIA019991
			Figure Number <b>6d</b>

Note: All infrastructure shown on the map represents proposed locations



SWH Code	Description
ABH	Amphibian Breeding Habitat (Woodland)
ABH (WE)	Amphibian Breeding Habitat (Wetland)
BMC	Bat Maternal Colony
SCC	Species of Conservation Concern
SS	Seeps & Springs
TNA	Turtle Nesting Area
TWA	Turtle Wintering Area
WASBB	Woodland Area Sensitive Breeding Birds
WRN	Woodland Raptor Nesting
WSSA	Waterfowl Stopover Staging Aquatic
WNA	Waterfowl Nesting Area
SESBB	Shrub/Early Successional Bird Breeding Habitat



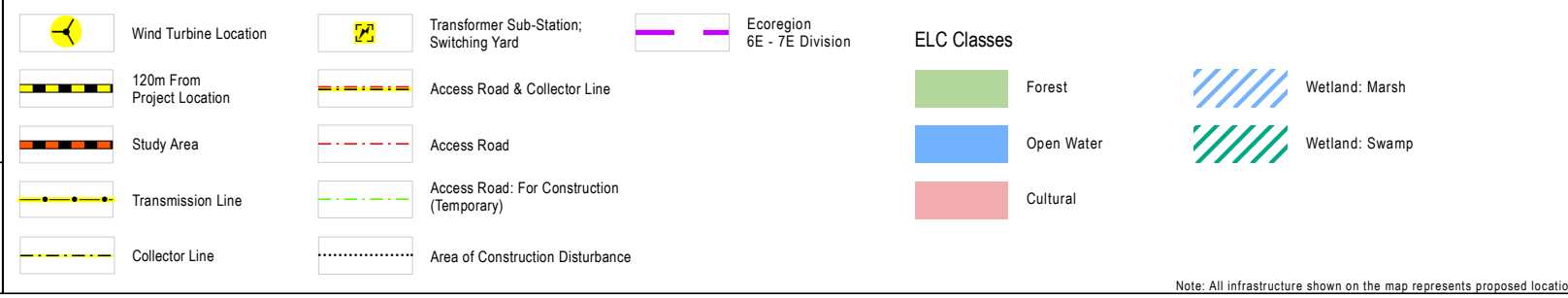
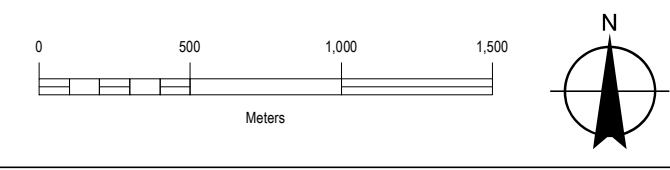
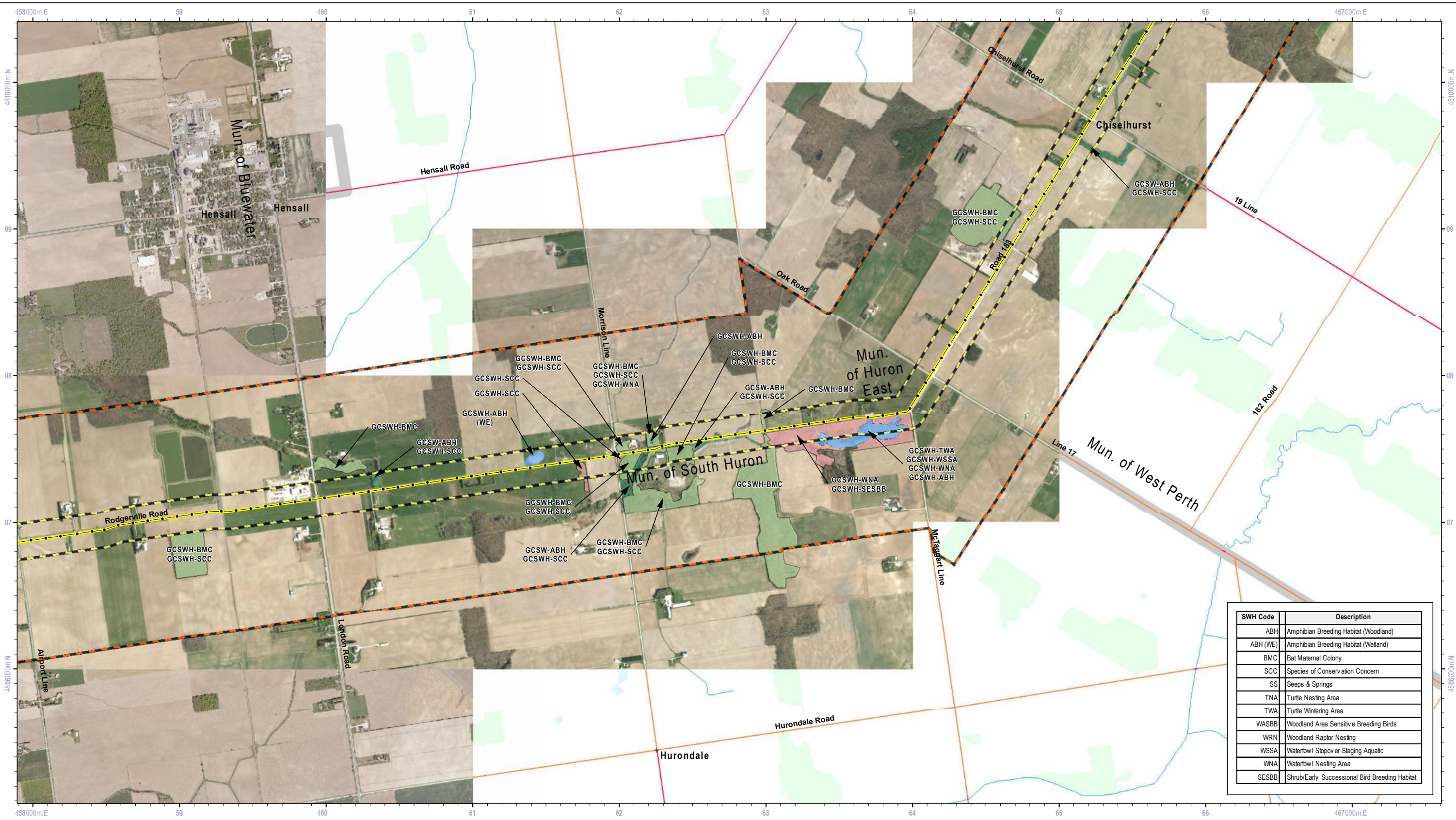
Wind Turbine Location	Transformer Sub-Station, Switching Yard	Ecoregion 6E - 7E Division	Forest	Wetland: Marsh
120m From Project Location	Access Road & Collector Line		Open Water	Wetland: Swamp
Study Area	Access Road		Cultural	
Transmission Line	Access Road: For Construction (Temporary)			
Collector Line	Area of Construction Disturbance			



Title  
**Grand Bend Wind Farm**  
 Grand Bend Wind Limited Partnership  
 Evaluation of Significance Report  
 Generalized Candidate SWH

Prepared	P. Stubbert	Checked	T. Radburn	Figure Number
Scale	1:25,000	Project	PIA019991	<b>6e</b>

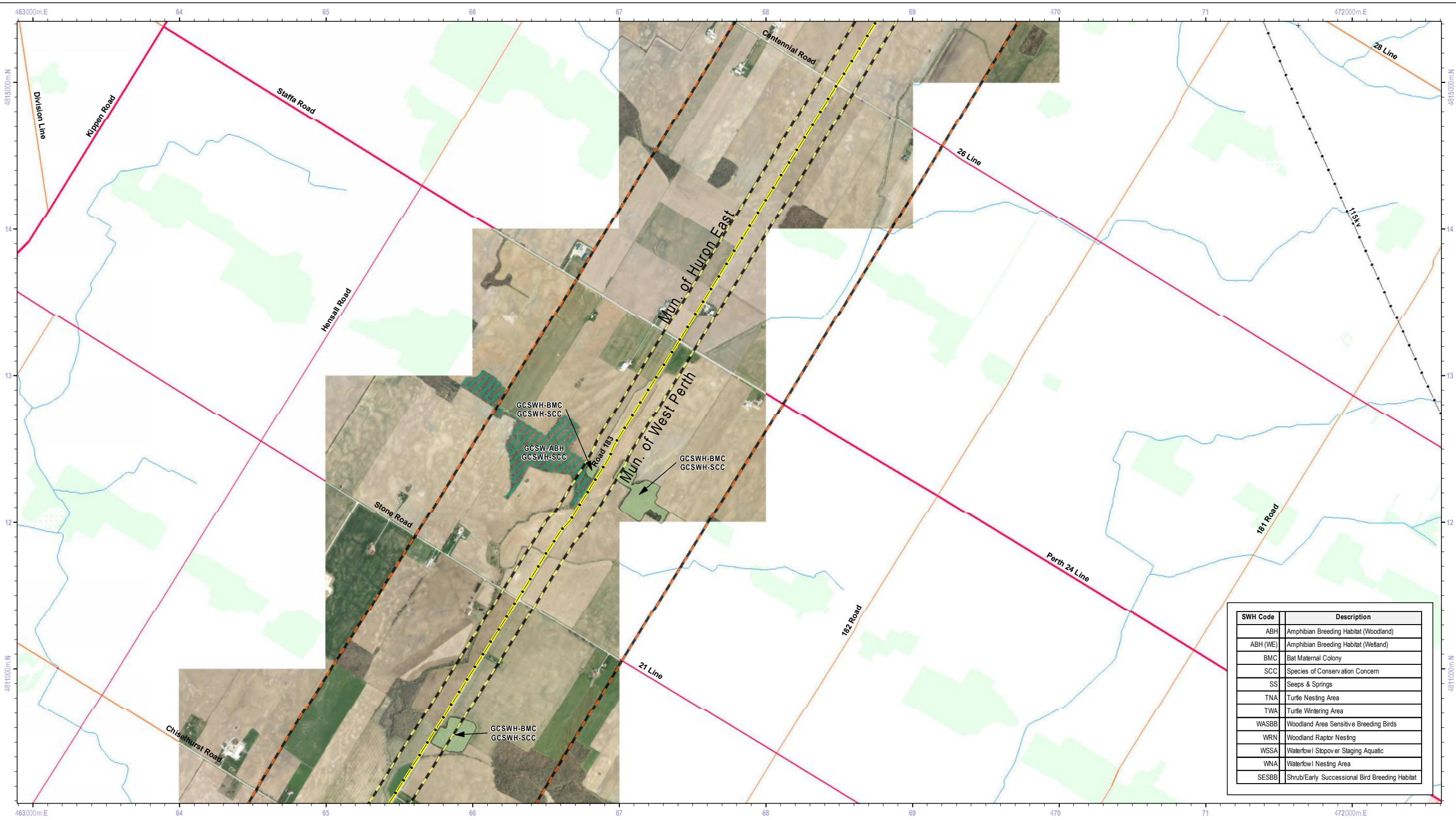
Note: All infrastructure shown on the map represents proposed locations



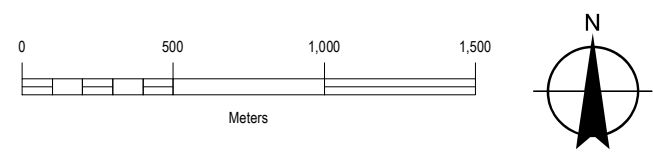
Note: All infrastructure shown on the map represents proposed locations

Title <b>Grand Bend Wind Farm Grand Bend Wind Limited Partnership Evaluation of Significance Report Generalized Candidate SWH</b>			
Prepared	P. Stubbert	Checked	T. Radburn
Scale	1:25,000	Project	PIA019991
Figure Number			<b>6f</b>





SWH Code	Description
ABH	Amphibian Breeding Habitat (Woodland)
ABH (WE)	Amphibian Breeding Habitat (Wetland)
BMC	Bat Maternal Colony
SCC	Species of Conservation Concern
SS	Seeps & Springs
TNA	Turtle Nesting Area
TWA	Turtle Wintering Area
WASBB	Woodland Area Sensitive Breeding Birds
WRN	Woodland Raptor Nesting
WSSA	Waterfowl Stopover Staging Aquatic
WNA	Waterfowl Nesting Area
SESBB	Shrub/Early Successional Bird Breeding Habitat



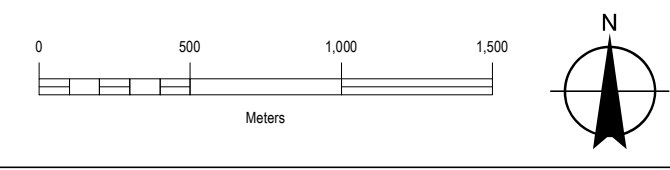
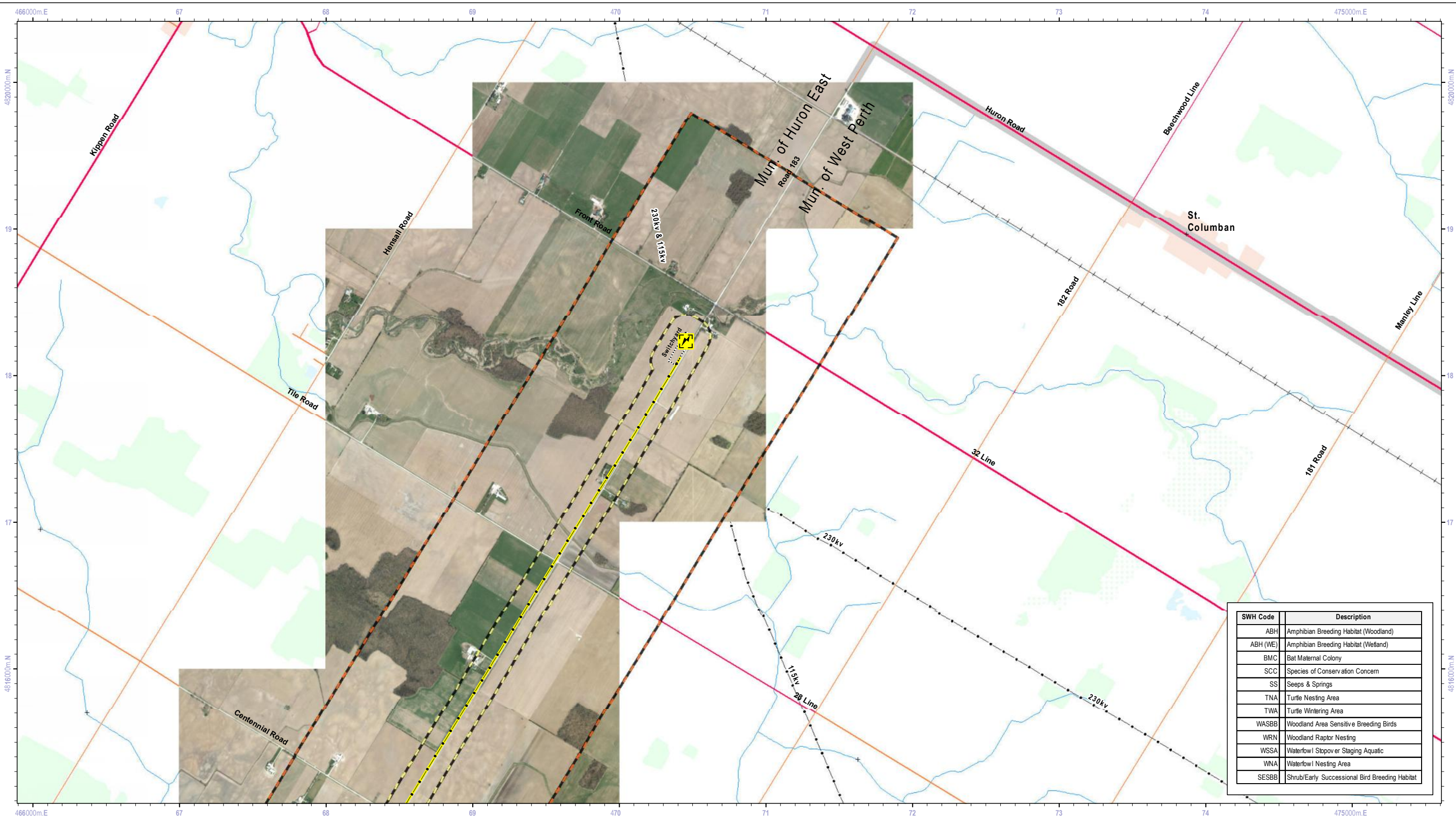
Wind Turbine Location	Transformer Sub-Station, Switching Yard	Ecoregion 6E - 7E Division	Forest	Wetland: Marsh
120m From Project Location	Access Road & Collector Line	Access Road	Open Water	Wetland: Swamp
Study Area	Access Road: For Construction (Temporary)	Area of Construction Disturbance	Cultural	
Transmission Line				
Collector Line				



Title  
**Grand Bend Wind Farm**  
 Grand Bend Wind Limited Partnership  
 Evaluation of Significance Report  
 Generalized Candidate SWH

Prepared	P. Stubbert	Checked	T. Radburn	Figure Number
Scale	1:25,000	Project	PIA019991	<b>6g</b>

Note: All infrastructure shown on the map represents proposed locations



- Wind Turbine Location
- 120m From Project Location
- Study Area
- Transmission Line
- Collector Line
- Transformer Sub-Station, Switching Yard
- Access Road & Collector Line
- Access Road
- Access Road: For Construction (Temporary)
- Area of Construction Disturbance
- Ecoregion 6E - 7E Division
- ELC Classes**
  - Forest
  - Open Water
  - Cultural
  - Wetland: Marsh
  - Wetland: Swamp



Title  
**Grand Bend Wind Farm**  
 Grand Bend Wind Limited Partnership  
 Evaluation of Significance Report  
 Generalized Candidate SWH

Prepared	P. Stubbert	Checked	T. Radburn	Figure Number
Scale	1:25,000	Project	PIA019991	<b>6h</b>

Note: All infrastructure shown on the map represents proposed locations