

February 19, 2013

Subject: Cochrane Solar Project - Archaeological Reports

Northland Power Solar Abitibi L.P., Northland Power Solar Empire L.P., and Northland Power Solar Martin's Meadows L.P. (hereinafter collectively referred to as "Northland") are proposing to develop a 30-megawatt (MW) AC solar photovoltaic project titled the "Cochrane Solar Project" (hereinafter referred to as the "Project"). The Project will be developed on three separate properties (Abitibi, Empire and Martin's Meadows), each with a maximum nameplate capacity of 10-MW AC, and each with a separate OPA FIT contract.

A 21-km long 115-kV transmission line and associated infrastructure is proposed to connect the Project to an existing 115-kV Hydro One Networks Inc. (HONI) transmission line (circuit C2H) north of Hunta, ON, at the intersection of Highway 668 and Concession 8/9.

The Project was formerly submitted to the MOE as three, individual 10-MW projects known as the Abitibi Solar Project, the Empire Solar Project and the Martin's Meadows Solar Project. As the three developments are in close proximity to one another and connect to a common transmission line, they are being integrated as one Project as per Section 4(3) of Ontario Regulation 359/09 ("the Regulation").

The Abitibi and the Martin's Meadows properties are located on Glackmeyer Concession Road 8/9, in the Town of Cochrane. The Empire property is located on Glackmeyer Concession Road 6/7, in the Town of Cochrane. The 115-kV transmission line will be located primarily along public opened and unopened road allowances associated with Concession 8/9 from the locations of the three solar development properties in the Town of Cochrane, through the Unorganized Township of Clute, to the connection point located north of Hunta, ON in the Unorganized Township of Calder. Some private land outside of the road allowances will be used for the transmission line, primarily associated with the placement of the line around the southern end of Lower Deception Lake, as well as for the associated infrastructure (such as transition structures and switching station).

With respect to the requirements of Section 22 the Regulation relating to archaeological assessment, several reports have been prepared for the Project. Primarily, this is a result of the previous preparation of Project documents for each individual property. Therefore, a key map (attached) is provided to show in which reports the relevant components of the Project are addressed. Though not shown in the key map (in order to show the Abitibi, Empire and Martin's Meadows properties in sufficient detail), all components of the transmission line and associated infrastructure are addressed within the identified report for the portion shown in the key map.



Safety • Quality • Sustainability • Innovation

H334844-0000-07-218-0197, Rev. 0

February 19, 2013

If you have any questions about this letter or the associated reports, please do not hesitate to contact the undersigned at 905-374-0701, Ext. 5280, or smale@hatch.ca.

Sincerely,

A handwritten signature in black ink, appearing to read "Sean K. Male".

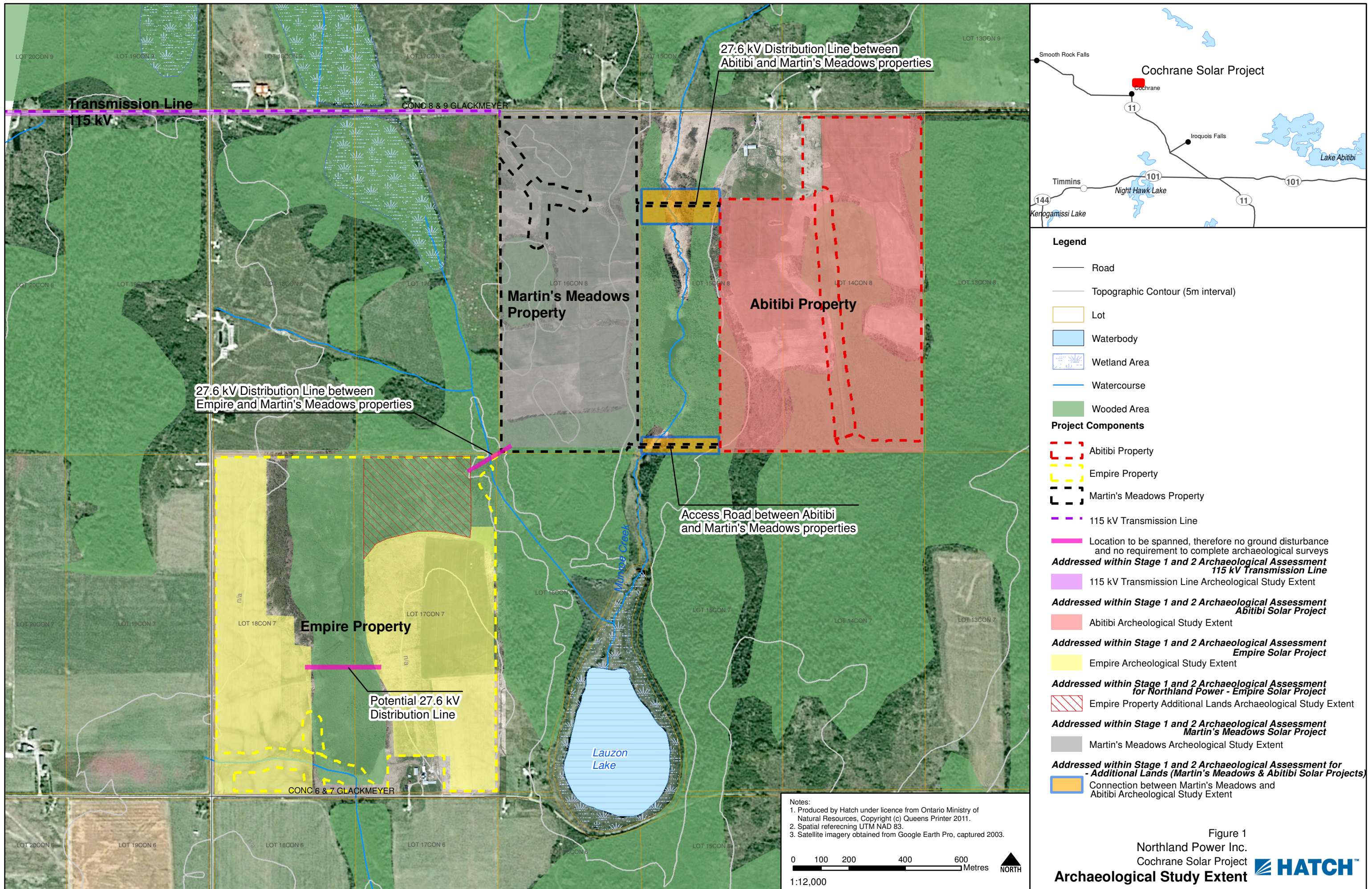
Sean K. Male, M.Sc.
Environmental Coordinator

Attachment
Archaeological Study Extent



Safety • Quality • Sustainability • Innovation

H334844-0000-07-218-0197, Rev. 0
Page 2



- Legend**
- Road
 - Topographic Contour (5m interval)
 - Lot
 - Waterbody
 - ▨ Wetland Area
 - Watercourse
 - Wooded Area
- Project Components**
- ▭ Abitibi Property
 - ▭ Empire Property
 - ▭ Martin's Meadows Property
 - 115 kV Transmission Line
 - Location to be spanned, therefore no ground disturbance and no requirement to complete archaeological surveys
- Addressed within Stage 1 and 2 Archaeological Assessment 115 kV Transmission Line**
- ▭ 115 kV Transmission Line Archeological Study Extent
- Addressed within Stage 1 and 2 Archaeological Assessment Abitibi Solar Project**
- ▭ Abitibi Archeological Study Extent
- Addressed within Stage 1 and 2 Archaeological Assessment Empire Solar Project**
- ▭ Empire Archeological Study Extent
- Addressed within Stage 1 and 2 Archaeological Assessment for Northland Power - Empire Solar Project**
- ▨ Empire Property Additional Lands Archeological Study Extent
- Addressed within Stage 1 and 2 Archaeological Assessment Martin's Meadows Solar Project**
- ▭ Martin's Meadows Archeological Study Extent
- Addressed within Stage 1 and 2 Archaeological Assessment for - Additional Lands (Martin's Meadows & Abitibi Solar Projects)**
- ▭ Connection between Martin's Meadows and Abitibi Archeological Study Extent

Notes:
 1. Produced by Hatch under licence from Ontario Ministry of Natural Resources, Copyright (c) Queens Printer 2011.
 2. Spatial referencing UTM NAD 83.
 3. Satellite imagery obtained from Google Earth Pro, captured 2003.

0 100 200 400 600 Metres NORTH

1:12,000

Figure 1
 Northland Power Inc.
 Cochrane Solar Project
Archaeological Study Extent